

Redcliffe

FREE JULY 2020

GUIDE

HAVE A WHALE OF A TIME



ON MORETON BAY

WARM UP
AT REDCLIFFE
MARKETS

**STREET
PARTY**



**NEW!
REAL
ESTATE**
SECTION
INSIDE

Painting
**ISOLATION
INSPIRATION!**



ALL TREE & PALM

TRIMMING & REMOVAL

- **Insured & Qualified**
- **Competitive Rates**
- **Free Quotes**
- **Redcliffe Local**

Phone for a Quote!
0437 814 967

Simple skincare for your beautiful, unique face



★★★★★

"I love your new skincare products. They are just beautiful to use. My skin is so **soft and smooth**."



bu

BEAUTIFUL
UNIQUE FACE
BY ANITA EAST

New range
available now at



ANITA EAST
MEDISPA

JULY 2020



PUBLISHER

Dominic Alberth

DESIGN & ILLUSTRATION

Crystal Shaw

ADVERTISING ENQUIRIES

Kristy Yaldwyn
sales@redcliffeguide.com.au
Phone: 07 3338 5091

STORY IDEAS

editor@redcliffeguide.com.au

Contents

- 6 **MURPHY THE MAGNIFICENT!**
Catch worldwide magician Ben Murphy, who beat Houdini himself, for a live online show!
- 8 **AQUATIC WONDERLAND**
The Bluewater Square Shopping Centre will deliver an immersive underwater experience.
- 10 **REDCLIFFE MARKETS STREET PARTY**
Carnival-themed party brings the sounds, sights and flavours of South America to the foreshore.
- 18 **ROCKIN' 4 THE HOMELESS**
The countdown to one of Redcliffe's favourite music festivals is on again with a new date.
- 22 **HAVE A WHALE OF A TIME ON MORETON BAY**
Whale migration activity is happening again in Moreton Bay and you won't want to miss it.
- 26 **ISOLATION INSPIRATION!**
What do artists do when faced with never-ending isolation at home? They paint!
- 32 **DINING GUIDE**
- 51 **REAL ESTATE GUIDE**
- 58 **TRADES & HOME SERVICES**

redcliffe GUIDE | **sandgate** GUIDE | **chermside** GUIDE

The Redcliffe Guide is intended for informational purposes. The Publisher and other affiliated parties do not endorse and are not responsible for any third-party contributor information, nor do we endorse the content of any advertisement. Our editors take reasonable care in the development of this publication. However, we do not assume any responsibility for any errors or omissions this Guide may contain.

AZURE BLUE REDCLIFFE

Feel right at home

2 AND 3
BEDROOM
APARTMENTS

FROM
\$375,000*



Azure Blue Redcliffe offers you easy retirement living with modern, spacious apartments close to shopping, medical and transport services, and a low maintenance lifestyle giving you the freedom to enjoy the things that really matter to you.

You'll be welcomed into a secure community surrounded by friendly and familiar faces with resort style facilities and year round activities so you can be as active as you choose to be.

For peace of mind Azure Blue offers Blue Care Help at Home services to give care and support if and when you need it.

Make your wise move today

Call **1800 990 446** or visit www.AzureBlue.com.au/Redcliffe

*Price correct at time of print



91 Anzac Avenue, Redcliffe

AzureBlue
Retirement Living

MURPHY THE MAGNIFICENT!

Story *Donna Roberts*

Growing up in Redcliffe, magician Ben Murphy went from performing at McDonald's birthday parties to entertaining thousands worldwide.

Ben's magic act was born from time spent in the Royal Brisbane Children's Hospital as a child.

"[They] had an amazing kids program called Rainbow Connection, and there were often people doing magic tricks there," Ben said.

Magician
Ben Murphy

"I would always be fascinated by the magic — annoying the entertainers and begging to be taught the tricks.

"Then I would want to perform the magic I learnt for anyone that would watch."

From the hospital staff enjoying Ben's early shows, he would then perform free shows during family picnics to New Farm Park where his parents would watch Ben entertain passers-by.

From New Farm to New York and everywhere in between, Ben's talent for magic has seen him travel the world.

In 2009, Ben performed over 300 shows in the USA which were produced by Paul Osborne, who had produced for David Copperfield, Siegfried and Roy and more.

Ben also holds the record for the most live performances of the Houdini Chinese Water Torture Tank trick, beating Houdini himself!

"The feeling of being on stage and right on cue having an entire room laugh, or gasp at an impossible feat is incredible," Ben said.

"I feel like a music conductor, but the audience is the instrument.

"Nothing beats that feeling of a live show and the energy you get from [it]."

This year has been tough for many, with entertainers hit hard by the pandemic.

"We were home for a break from our shows in China," Ben said.

"It was 4am on a cold Melbourne morning [while] driving to the airport to return [to China], and my agent rings and informs me quite sternly NOT to board the flight and head back home.

"If we had got on the flight we would still possibly be stuck in China, with no audience, and no clear idea of the future."

Due to current performance limitations, Ben is offering online interactive magic shows for children's birthday parties, businesses or just for fun!

Visit benmurphy.com.au for details on how to book live shows or even magic lessons.

GOLD COIN - OP SHOP

Raising Funds for the Local Community



NEW CHARITY SHOP

- MENS & WOMENS
- KIDS CLOTHING
- BRIC A BRAC
- BOOKS & CD's
- SHOES & ACCESS
- KIDS TOYS

Find us @ 142 Sutton Street, Redcliffe

EVERYTHING IN-STORE \$1 OR \$2



Redcliffe's proposed Undersea Putt and Play promises a colourful collection of Moreton Island themed murals and sculptures, as seen in these artist impressions submitted with the development application to council.

AQUATIC WONDERLAND

UNDERSEA PUTT AND PLAY:

Story **Sally Gordon**

A Moreton Bay themed entertainment, leisure and tourism precinct proposed for the Bluewater Square Shopping Centre will deliver an interactive and immersive underwater experience for guests.

A development application (DA) for the 800 sqm precinct called 'Undersea Putt and Play', which is earmarked for the shopping centre on Anzac Avenue, was submitted to the Moreton Bay Regional Council mid-May.

The proposal details an 18-hole outdoor mini golf course with a black light cave, 3D underwater-themed mural art backdrops, two function spaces for parties, gaming areas as well as a dining and bar area.

Undersea Putt and Play has engaged project manager and builder, Shopfit Co, along with architects Vue Design and renowned replica artist Natureworks to complete the project. Under the guidance of urban town planning consultants Urbis, Undersea Putt and Play will be the region's first major entertainment precinct of its kind.

Elanor Investors Group leasing manager Jason Cravino said the DA was submitted following more than 10 months of consultation with local and state

government, local businesses, tourism bodies, designers and architects.

Mr Cravino said the development stakeholder group went through a highly collaborative process to investigate what type of facility would complement the community, create jobs, boost tourism, support local businesses and provide a high-quality experience.

He said the multimillion-dollar project had numerous unique elements, including its Moreton Bay theme and an all-inclusive design with interactive 'edutainment' features.

"There are different elements to the precinct, including the mini golf course and blacklight cave, cutting edge digital entertainment, virtual reality and gaming areas, a mini golf pro shop and food and beverage component," he said. "Visitors start their experience outside where the design will depict being on Moreton Island via an interactive 3D mural that wraps around the entire precinct.

"Once inside you'll be immersed into an underwater environment with the mini golf course featuring themed undersea sculptures in ultraviolet paint for high impact, night-time games — designed by Natureworks."

External work on the site is expected to start in August following council approval. The landmark venue is anticipated to open in September pending the easing of COVID-19 social restrictions.



STENSON'S

FLOOR SANDING & POLISHING

- Old & New Floors • Board Replacements
- Bamboo Clip Floor Installation
- Staircases & Decks • Staining • Free Quote

LUKE - 0428 114 552

MELISSA - 0404 304 060

QBCC #1263070



Luxury Seniors living at its best.



-  Spacious 1, 2 and 3 bedroom apartments, from just \$330,000
-  Safe, well appointed, luxurious communal spaces
-  Care available on site if needed



Book your private inspection now at mango.seasonsliving.com.au or call on 1300 732 766



WARM UP AT REDCLIFFE MARKETS STREET PARTY

Story Lyndal Magee

It might be winter, but there will be no hotter place this August than the Redcliffe Farmers and Artisan Markets first-ever street party. Run alongside the usual Sunday market, the Carnival-themed party will bring the sounds, sights and flavours of South America to the foreshore for the first time.

Goodwill Projects owner Mark Power, whose organisation manages the markets, said inspiration for the event came from the surrounding location. "The markets now extend 1km along the Redcliffe foreshore, offering a wonderful vista," Mr Power said. "We just thought it was a great opportunity for people to not only shop for goods, but also to kick back, relax, see friends and enjoy the beautiful weather along the beach."

The family-friendly event features entertainment from samba dancers and drummers, stilt walkers and fire breathers, along with a petting zoo and jumping castle for the little ones. Salsa dance workshops offer attendees the chance to join in. "There will be seven or eight different rotating groups of entertainers, many of them providing traditional entertainment," Mr Power said.





“The workshop instructors are really vivacious and love getting people involved.”

Mr Power said that the best providers of South American street food had been sourced from the east coast of Australia for the day. This emphasis on quality food is something the team at Goodwill Projects has brought to the usual market offerings as well, with stallholders from across South East Queensland providing shoppers with a true ‘paddock to plate’ experience. “We’ve brought in a lot of specialised offerings, including cheeses, handmade pastas, chutneys, genuine honey, and a lot of organic goods,” Mr Power said. “This is an important experience to offer, so we’ve really focused carefully on this aspect.”

Along with the recent expansion of the markets has come a renewed focus on quality. “Markets where you slap a cardboard box up and zip tie it to a traffic pole, that became unacceptable 20 years ago,” Mr Power said.

“ Markets must be very dynamic, evolving, and engaging spaces.”

Mr Power said the public might be surprised to know just how much time goes into the market behind the scenes. “We’re there at two o’clock in the morning every Sunday. The markets don’t start until 8am,” he said. “That gives you some idea of the time and attention that goes into setting it all up. We’ve received some wonderful feedback in regards to the little touches.”



**REDCLIFFE FARMERS AND ARTISAN
MARKETS STREET PARTY***
SUNDAY 2 AUGUST 8AM-2PM
(MARKETS RUN EVERY SUNDAY)
REDCLIFFE PARADE

**As advice regarding COVID-19 is constantly evolving and safety of attendees is paramount, this event is subject to change. Check the Redcliffe Markets Facebook page for up to date information.*



Reflect, Refocus & Reignite

For some businesses, I am expecting something I call the slingshot effect. Just like a slingshot that has the marble in the launch pouch, as the rubber slings are pulled right before it is released at high speed, we have been pulled back and are now under tension and ready to launch into this new era, post COVID-19. Here are some ideas to consider and prepare yourself and your business for.

Reflect

Spend some time reflecting on the last couple of months. What did you learn about yourself as a business owner, your industry and your customers? One of the things we know about global economies is they are cyclical. Even if it is not a health pandemic as the driver, you can be sure that there will be another similar effect to that we have just experienced, sometime in the future. What do you need to put in place for when this happens next time?

Refocus

For a lot of us, our usual routines and ways of doing things went out the window when this began. So we have had to make adjustments, some of these may have been a good thing for our businesses, some not so good. Now is the time to begin refocusing on the most important things we need to be doing with consistency. A big part of any businesses success is consistency in completing the right things.

Reignite

We were all put into various forms of hibernation as was required. Just like when you go to use an old heater that hasn't been used in a while, we may need to do some checks beforehand to make sure we can reignite it safely again. What do you need to check before you reignite your business? Think about financials, marketing, sales, systems and your team. If you need help in any area of your business, just reach out to your local chamber of commerce. We are offering free membership until the end of 2020 (save \$150) visit www.redcliffepeninsulachamber.org.au

REDCLIFFE ART SOCIETY IS EMERGING FROM ISOLATION



The Redcliffe Art Society Committee wishes to advise that the re-opening of The Old Fire Station Gallery and Gallery Shop will be gradual, in accordance with the Queensland Government recommendations. This will occur during July, 2020.

The Gallery Shop is full of locally created art and artisan wares to purchase.

To launch the gallery's new season, there will be an exhibition of artwork produced by our very own tutors and conveners. This exhibition will showcase a potpourri of art styles and disciplines, ranging from drawing to painting — mediums offered are watercolour, acrylics, oils, graphite, ink, pastel and charcoal. Classes are from Monday to Friday, 9am through to 4pm.

COVID-19 saw the flourishing creative community discover the delight of more time to immerse in its art. A lot of untapped local emerging artists may be wondering where they can learn to enhance their art skills. Beginning artists may wish to start, and with 15 classes available each week there is a wide variety to choose from.

The Redcliffe Art Society is happy to answer any questions you may have regarding membership, classes and gallery hire. Please contact:

Phone: 3284 0852

Address: Old Fire Station Gallery, 395 Oxley Ave Redcliffe, Q 4020

Email: ras395@redcliffeartsociety.com.au

Website: redcliffeartsociety.com.au

Hours: Wednesday to Sunday, 10am to 3pm

YVETTE D'ATH MP

Member for Redcliffe



Putting Redcliffe First

SUPPORTING REDCLIFFE BUSINESSES AND WORKERS



The Palaszczuk Government is investing \$2.5 billion towards a COVID-19 package to support small and medium sized businesses, including:

- ✓ \$950 million payroll tax relief
- ✓ \$500 million to support workers who have lost their job or income to transition to new jobs and industries and help businesses access skilled labour
- ✓ \$1 billion Queensland COVID-19 Job Support Loans to help businesses retain staff and maintain operations



Pick A Lily Florist Peninsular Fair



Over There Cafe Dolphins Central



The Golden Ox Margate

🏠 Bluewater Square Shopping Centre,
Cnr ANZAC Ave & Sutton Street, Redcliffe
☎ 3448 7100
✉ redcliffe@parliament.qld.gov.au

📘 yvetteforredcliffe
🐦 YvetteDATH
📷 yvettedath
🌐 www.yvettedathmp.com

A WORD FROM OUR REPRESENTATIVES

Cr Karl Winchester



It is an honour to have gained the support of the Redcliffe community at the recent Council election. I have begun working on the issues and priorities raised during the campaign period and we've already seen some major achievements

across Moreton Bay. The Mayor and Council have prioritised reworking our planning scheme to better reflect local expectations while also developing local neighbourhood plans. We are also backing local jobs and businesses with stimulus funding. Specifically, the Redcliffe Peninsula has received over \$885,000 of funding for community infrastructure projects, helping local tradies and suppliers. A major reform already achieved is the implementation of a 'Locals Preference' procurement policy, reinvesting Council rates to local employers. These early achievements are the priorities I spoke to residents about during the election. The reforms set us on a positive pathway towards better planning outcomes and supporting local employers and jobs. There is much more to be done and the work of this new Council has just begun. Please do not hesitate to contact me regarding community and Council matters, feedback or ideas.

Yvette D'Ath MP



There is no denying the fact the past few months have been different for us all as we have adapted to COVID-19. While the pandemic is not over, I have been heartened to see how resilient and supportive our community has been.

We are now seeing the easing of restrictions, due to the strong actions by us all. We know that the actions we as a community have undertaken have had a negative impact on our economy and local businesses, but we have also seen many businesses evolve and adapt, with many taking advantage of the Palaszczuk Government's business grants and assistance packages.

While words cannot express our gratitude enough, on behalf of our entire Redcliffe community, I would like to thank our emergency services and essential service workers, including retail workers, who continue to go to work daily, to ensure we as a community have the services we need.

To find out more about support services available or the road-map to Unite and Recover Queensland visit www.covid19.qld.gov.au.

Luke Howarth MP



Last month, I had the absolute delight of hosting a Biggest Morning Tea at my office to raise funds for the Australian Cancer Council. Due to COVID19 restrictions this year, we decided

to theme the event as a 'take-away morning tea', which saw people pop by briefly to grab a quick coffee and a baked good. In these times of social distancing and self-isolation, we need to find ways to stay connected, now more than ever.

The event was a huge success and together we raised \$931 for the Cancer Council Australia. I'd like to thank the Citipointe Church Redcliffe for bringing along the coffee cart, Banjo's Redcliffe and Von Begg's Pies (if you need any catering, contact Yvonne on 0411 389 296) for their amazing contribution on the day. Money raised from this event will go towards research, support and prevention. We couldn't have done it without you. Thank you, Petrie, for showing your kindness and generosity even through these tough times.

We look forward to the next few months and now is the time to get back to work and have our businesses start to reopen! Let's get ready to open Queensland for business!



ILS STORE NOW OPEN AT KIPPA RING

GET 10% OFF WHEN YOU PRESENT THIS ADVERT IN STORE
VALID TILL 31ST JULY 2020



WALKING AIDS



BEDS & MATTRESSES



ELECTRIC RECLINERS

SALES • HIRE • SERVICE • ADVICE



BATHROOM AIDS



MOBILITY AIDS



OXYGEN CONCENTRATORS



PATIENT TRANSFER



PHYSIOTHERAPY



PRESSURE CARE



Architectural concept drawing of the Community HUB in action.

Bold Decision to Benefit the Peninsula

The Redcliffe Uniting Community HUB will be a space where members of the community of all ages can come and connect with others, access professional human services, or just relax and have a coffee! The HUB is Redcliffe Uniting Church's gift to the community, and now it's another step closer to being built.

After several years of meticulous planning, the Redcliffe Community HUB was looking all set to be built alongside Redcliffe Uniting Church's existing premises when COVID-19 hit. Despite these uncertain times, the Church has voted overwhelmingly to press ahead with final design and tender, following Development Approval from Moreton Bay Regional Council.

The final vote was taken amid the escalating COVID-19 crisis. "This was the perfect storm for us," said lead minister Paul Clark. "Not only did we have to wrestle with the economic uncertainty of the pandemic, but we couldn't even meet to vote."

"Our leaders had a crisis meeting to decide what we should do," said Rev Clark. "I was expecting

to hear, 'let's sit and wait', but that's not what happened."

The church leadership acknowledged the challenging times and that past assumptions were now more fluid. Amidst some caution, but with much inspiration, the leadership concluded that a pandemic was just such a crisis the Community HUB was meant to address, and the decision was taken to set up online voting.

Church Council Chair Bob Zander said, "After the pandemic, people will be looking for somewhere to go where they can put their lives back together."

Project Chair Tony Hunter said, "If the church failed to act at a time like this, what is the point of being a church?"

"We already have great services like Encircle and the Breakfast Club operating in Redcliffe, and we will work closely with them. The Community HUB will have a range of complementary services in one location, offering holistic help," Tony said.

It's time to begin imagining a community coming together with the needed infrastructure to help improve people's lives in the region for years to come.

The HUB is set to open in late 2021. If you would like to be part of this exciting vision in any way, please contact the church at bsm@redcliffeuniting.com.au

“How old you ARE is your business.
How young you LOOK is ours, **naturally...**”



Body Bliss' paramedical programs can help target:

- Premature aging
- Fine lines and wrinkles
- Acne & scarring
- Pigmentation and sun damage
- Blackheads and breakouts
- Plus much more...

FREE

**MICRO PEEL
WITH ANY
FACIAL**

FREE

**GEL
WITH ANY
PEDICURE**

FREE

**BROW SCULPT OR
UNDERARM WAX
W/ANY FULL LEG
& BIKINI WAX**

DMK programs specialise in revising

- Acne and congestion • Pigmentation and uneven skin tone • Wrinkles and fine lines
- Premature ageing and sun damage • Scarring, stretchmarks and cellulite

“We are all about transforming your skin with high tech prescription-only retail and professional skin treatment products.”

Rockin' 4 The Homeless TO ROCK OUT IN DECEMBER

THE COUNTDOWN TO ONE OF REDCLIFFE'S FAVOURITE MUSIC FESTIVALS IS ON AGAIN WITH ORGANISERS SETTING A NEW DATE FOR **THE ROCKIN' 4 THE HOMELESS 2020 FESTIVAL.**



The Rockin' 4 The Homeless festival's awesome sounds and talented line-up of musicians will rock Redcliffe mid December.



Organisers are now planning to rock Redcliffe with a spectacular line-up of live music, entertainment, food and family fun on Saturday, 19 December.

The festival was supposed to go ahead on 12 June, but due to COVID-19 social restrictions, had to be postponed.

Now in its seventh year, Rockin' 4 The Homeless is an initiative of and major fundraiser for The Breakfast Club Redcliffe, along with the event's gala ball and fundraising auction, being held Friday, 18 December.

Rockin' 4 The Homeless director Dan Nebe said that while most aspects of the event were already locked in, such as the entertainment and sponsors, organisers were maintaining a flexible stance on the final event format.

"We have to be ready for different scenarios ... by December, if we're only allowed to have 200 people, then when we might run two different shows including an afternoon and evening session with a shorter, more compact format, but if it's open slather on crowd numbers — we'll be ready for that too," Dan said.

"This year, it's looking like we'll have one big stage along with some different areas including a chill-out zone, acoustic area and potentially a DJ tent.

"We have to plan for the best-case scenario and the worst, and we'll be ready to tailor the event for whatever that presents, come December."

Festival-goers can expect an action-packed line-up of musical talent as seen in previous years

with the likes of Superjesus, Spy vs. Spy, Team Utopia, Salt & Steel, Tripsitta and many more.

A \$100k fundraising goal has been set for the event, all of which goes towards running The Breakfast Club — a volunteer organisation that supports the homeless and those in need on the Redcliffe Peninsula.

Anyone interested in supporting Rockin' 4 The Homeless with sponsorship or as a volunteer is encouraged to get in contact via the event's Facebook page.

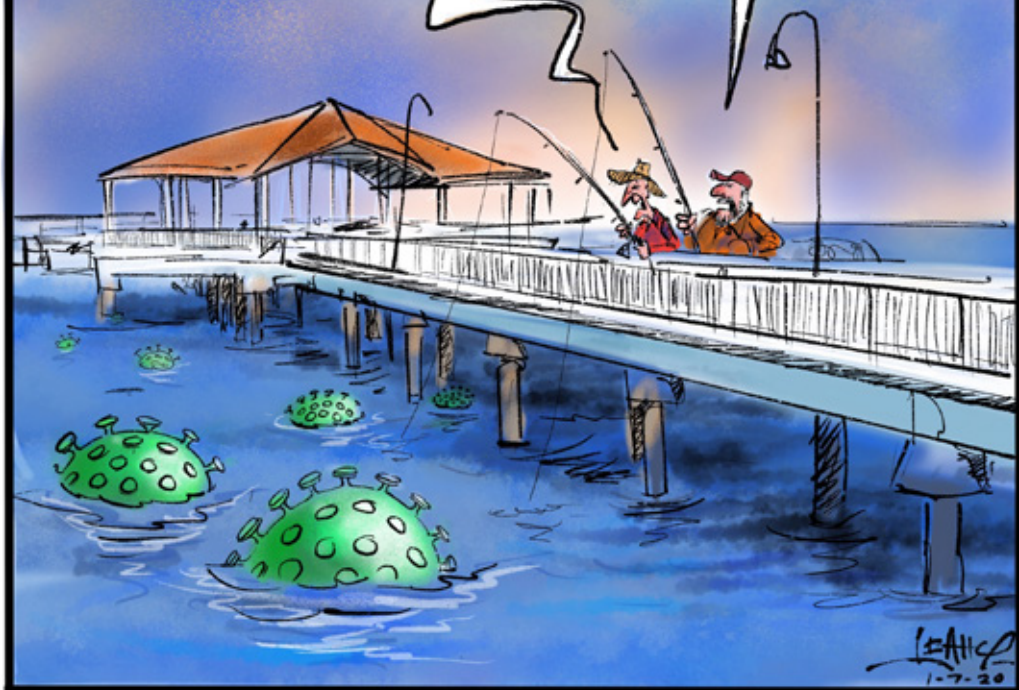
More details, including the new event venue, will be released next month.

Rockin' 4 The Homeless 2020
Saturday, 19 December 2020; 1pm - 10pm
Redcliffe



I JUST ENDURED
FOUR MONTHS OF
SOCIAL ISOLATION
AND I NEVER
CAUGHT A THING...

Yeah? Let's
keep it
that way...



SUNDAY TO THURSDAY

FROM 5.30PM



\$15.95
Specials



\$14.95



TUESDAY SCHNITZELS



300gm Chicken Schnitzel with chips & salad.

Parmy

Double smoked ham,
tomato & basil sauce,
3 cheese mix.

Add
\$3

Cancun

Tomato relish,
pineapple, jalapenos
& grilled cheese.

Add
\$3

Godfather

Onion jam, salami,
roasted peppers,
olives & mozzarella.

Add
\$4

Marinara

Smoked salmon, sauteed
prawns, spanish onion
& camembert cheese.

Add
\$6

WEDNESDAY STEAK DAY

300gm Rump

served with chips & salad.

Add a
topper for

\$4

\$16.95
with
choice of sauce.

NEW Menu



Ambassador
OF REDCLIFFE



41 Redcliffe Parade, Redcliffe
ph 3284 6427 | www.ambasshotel.com.au



Captain Kerry Lopez

HAVE A WHALE OF A TIME ON MORETON BAY

Story **Jodie Woodward**

While the human world has been in a bit of turmoil this year, it's business as usual for the whale population. That means whale migration activity is happening again in Moreton Bay and you won't want to miss it.

Office Manager at Brisbane Whale Watching, Dessray Colledge said it's important for everyone to know that whale watching cruises will be recommencing for the season in July.

"Unfortunately, you can't see the whale migration from land here in Redcliffe, so the best option is to join us onboard our daily cruises," Dessray said.

Whale watching season runs from June through to November, with whale sightings a daily occurrence. If you're ready to set sail, you can hop aboard a cruise with Brisbane Whale Watching —

a multiple award-winning Eco Accredited nature tourism cruise company. It's owned and operated by the South Pacific's only female captain of a whale-watching venture, Captain Kerry Lopez. The best part is you're guaranteed to see a whale!

"Captain Kerry and her friendly crew are ready to take you on an unforgettable journey through the crystal-clear waters of Brisbane's Moreton Bay to experience the mesmerizing migration of the mighty humpback whales," Dessray said.

"You will always remember your first time sighting the Humpback Whale. It's such a massive animal in its natural habitat — breaching, blowing and playing just meters from the boat. It will leave you with goosebumps!"

Moreton Bay is recognised as one of the world's best whale-watching destinations. So even though the year might have gotten off to a rocky start, now is the perfect time to get out and about and experience something new.

"Humpback whales are just magical creatures. They are so inquisitive and to be honest when we are out there with them, it really is a case of 'who is watching who?'" Dessray said.

Brisbane Whale Watching tours operate daily during whale watching season. Passengers board from the Redcliffe Jetty at 9am, returning again in the mid-afternoon.

"We are really looking forward to welcoming everyone on board with us," Dessray said.

You can book your tickets or find out more info via brisbanewhalewatching.com.au.

ADVERTISEMENT

*Working together to
support our community*

Luke HOWARTH MP

Federal Member for **Petrie**

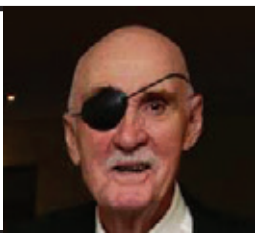
Kerri-Anne DOOLEY

LNP Candidate for **Redcliffe**



LNP 1 **LIBERAL
NATIONAL
PARTY**

PENINSULA PIMPERNEL



A Home Away From Home.

Story *Richard Lancaster*

Unlike 2020, during which the volunteers and the animals of the Peninsula Animal Aid have suffered the harsh results of the dreaded COVID-19 virus, 2021 promises to be a brighter year. For it will be 50 years since the concept of an animal refuge on the Peninsula was first born. Initially, a small group of dedicated animal lovers, concerned about the ever-increasing numbers of stray, sick and injured dogs and cats roaming Peninsula streets, took these animals into their homes and fostered them.

Redcliffe at that time had become a favourite dumping ground for callous Brisbane dog and cat owners, who drove over the Hornibrook Bridge and abandoned their unwanted pets in Redcliffe streets, knowing that the animals would be disoriented and be unable to find their way home.

Soon, the number of abandoned animals became so great that the Peninsula animal lovers were unable to cope. In 1974, another animal lover saved the day by donating a house, which the newly formed group relocated onto Council leased land in Huntington Street, Clontarf. But 20 years on, the four-footed occupants of the donated wooden house had outgrown their tenancy, so new accommodation became a necessity.

In 1997, the Redcliffe City Council recognised the need for larger premises and offered the group new accommodation at 313 Duffield Road, Clontarf. Now, another 23 years on, the volunteers are again fostering animals, due to lack of space at the refuge.

The ever increasing costs of food and veterinary bills keep the volunteers searching for new ways of fundraising. The popular weekly hydro bath service, the annual calendar and donated food, blankets, towels and money keep this wonderful voluntary gift to Redcliffe providing a 'home away from home' to many a sad, lost or abandoned pets.

The Write Time for a Contest

Story *Jodie Woodward*

If you're looking to flex your creative muscles, look no further than Moreton Bay Arts Council's inaugural Short Story Writing Contest.

After the introduction of isolation requirements, the arts council had to cancel nine of its upcoming events. In response, they created a free 'Staycation' series of events which includes this writing contest.

Moreton Bay Arts Council president Janice Charlish said people have nothing to lose by entering.

“It's the perfect time to try something new. You're not in a room with other writers and the only expectations are your own,” Janice said.

If you've got an idea for a story brewing, the contest asks you to pen 1500 – 2000 words of fiction for the chance to win \$100 and have your winning entry published. A runner-up will receive \$50, and both winners will be interviewed on 997 FM local radio.

“Hero or anti-hero, doer or dreamer, romance or thriller, mystery or history — focus on one memorable character or event as the driver for your work of fiction,” Janice said.

Entry is free and open to residents of Moreton Bay aged 18 years and over. Entries close 1 October. For more information, visit moretonbayartscouncil.org or the Moreton Bay Arts Council Facebook page.



Visa Lounge
GLOBAL IMMIGRATION
*Australian Visa Services
over 10 years experience*

**Work and Employer Sponsored Visa
Family, Partner and Spouse Visa
Skilled Visa
Student Visa
Visitor Visa
International Recruitment**

0407 048 955

info@visalounge.com.au | www.visalounge.com.au

Genuine, Expert Advice • Personalised Service

FREE 20 min consultation and quote | MARN 0957920

How to shake the past & enjoy your future

Feel calm, free, empowered, clear minded and in control of your life.



- ✓ Gain clarity and direction
- ✓ Resolve past trauma
- ✓ Release negative beliefs

• Psychic Readings • Time Line Therapy™ • Theta Healing • NLP Life Coaching

Call today 0410 756 798 | jennifercahill.com.au



HEALTH BY DESIGN CO

Summer Watts ND

0432 617 531
sommerwatts@hotmail.com
www.healthbydesignco.com.au

Naturopath, Nutritionist, Herbalist

Suite 6, Laurel's Arcade, 113 Brighton Road
Sandgate Qld 4017



Red and White
Coach Australia

Where are you dreaming of?

WE'RE WORKING ON SOME COACH TOURS FOR WHEN LIFE GETS BACK TO SOME KIND OF NORMAL...










Why not come with us and rediscover Australia!

Like us on Facebook

Committed to Quality Service!

Red and White Coaches
Phone 3269 6466



Isolation Inspiration!

What do artists do when faced with never-ending isolation at home? *They paint!*

Story Donna Roberts

Local artist Donna Hawkins' latest "Isolation Interior" series of paintings was born from boredom. The eight landscapes are all scenes from inside and outside her residence.

"I had been painting a large body of work for a show of my abstract interpretations of music... and I decided to just have a play one day and paint what was before me," Donna said.

"I have just completed my eighth Isolation Interior."

Donna's first isolation painting inspired one of her friends to create the Facebook group 'From Where I Sit Art Group' for others to contribute their art or photographs of the views from their locations.

"I have been overwhelmed by the positive responses to my interiors and thrilled that they have inspired others to try their hand at painting their own isolation interiors," Donna said.

Donna's road to becoming an artist was certainly not a straight one.

“When asked what I wanted to be when I grew up, I always answered ‘a famous artist and a teacher’ [so] I took private art lessons throughout my school years and went to art school post-high school,” Donna said.

“Years of being caught up with life followed... husbands, kids, houses, a managerial career.

“It wasn’t until 2003 when I became gravely ill and retired early at 43, that I turned back to art to make my soul sing once again.”

Since then, Donna has had two major solo exhibitions, participated in countless group shows and won first prize and People’s Choice in Redcliffe Art Society exhibitions in 2019.

She also won the CEO’s Award in Epic Assist’s 2018 art show for people living with a disability.

A Peninsula resident since 2011, Donna was Education Manager at the Redcliffe Art Society where she now tutors a class.

She also helps to coordinate a local social support group for people with breast cancer, the Pink Dolphins.

Donna hopes to exhibit her Isolation Interiors series at a local gallery space when restrictions are lifted.

Until then, her next isolation project will be a children’s storybook featuring her muse, Misty the cat.

Donna Hawkins



PODCAST OF THE MONTH

LORE lorepodcast.com

Fact Is Scari-er Than Fiction

Story *Nick Allford*

Have you always loved listening to a good yarn? Whether it be sitting, engrossed, listening to a teacher’s storytelling or plugging-in your headphones to lose yourself in a good audio book. Then perhaps ‘Lore’ could be your new favourite podcast.

Put simply, Lore explores historic scary stories, urban myths, legends and folklore, told in a “modern campfire experience” style.

Although the subject matter may occasionally be gruesome, creator, researcher and narrator Aaron Mahnke deliberately errs on the side of spooky rather than horror, making it more palatable to the listener.

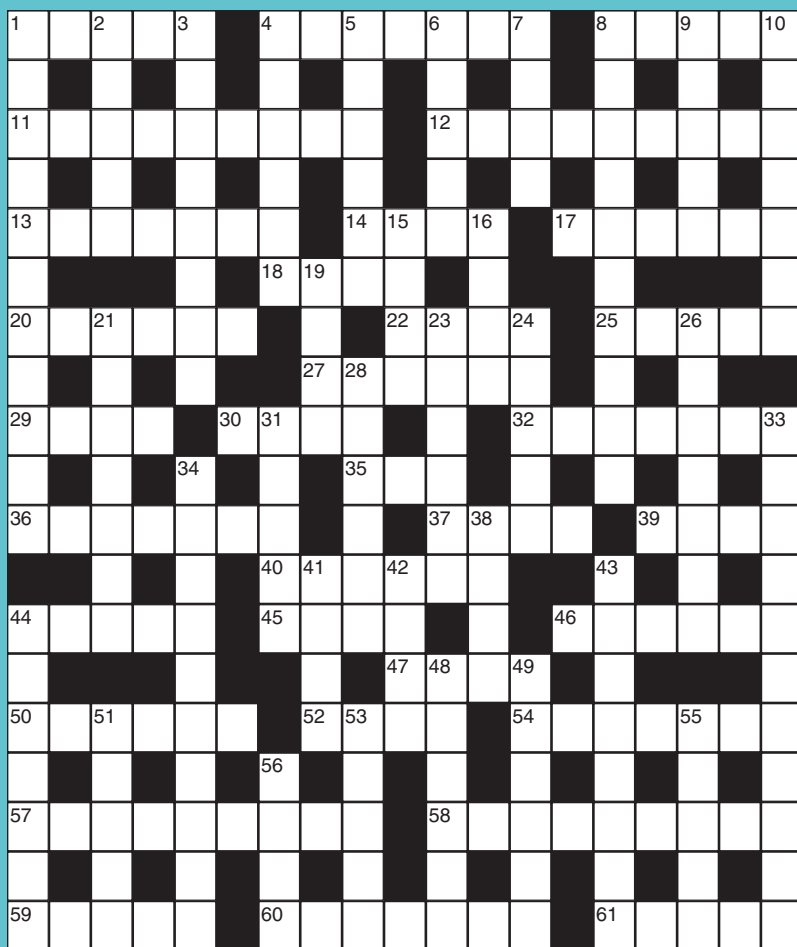
The extensive research shows in every episode, finding connections between seemingly unrelated tales. Adding new found depth and insight from familiar fables such as Dracula and facts about real-life killers such as H.H. Holmes.

However, Lore really excels by introducing us to new tales and characters. You’ll often be left scratching your head wondering how have these extraordinary people and their narratives passed you by all this time.

Some stories end defined and solved, and others are left wide open, leaving your imagination to fill the gaps. So, gather around the campfire this winter and binge listen to some Lore... maybe just don’t do it alone.

Find out more at lorepodcast.com

THE BIG ONE CROSSWORD



ACROSS

- 1 Depression (coll)
- 4 Striated
- 8 Personal belongings (coll)
- 11 Sealed
- 12 Logical
- 13 Stamp
- 14 Resistance units
- 17 Extent of something
- 18 Singing voice
- 20 Scolding (coll)
- 22 TV serial, ___ opera
- 25 Faint
- 27 Lithe
- 29 Test paper
- 30 Weld
- 32 Hollow

- 35 Accelerate (abb)
- 36 Washing-machine (4-3)
- 37 Active volcano
- 39 Outer coat of sheep
- 40 Reluctant
- 44 Military trainee
- 45 Claudius's successor
- 46 Ship's accounts officer
- 47 Fellow (coll)
- 50 Flummox
- 52 Abound
- 54 Petty criticism
- 57 Lying next to
- 58 Dead
- 59 Acquires
- 60 Draught horse tackle
- 61 Gift

DOWN

- 1 Truculent
- 2 Remove a lid
- 3 Not authentic
- 4 Apartment ownership; ... title
- 5 Very recent (3-3)
- 6 Light splitter
- 7 Baby's word for father
- 8 Next
- 9 On drugs
- 10 Worldly, carnal
- 15 Pipe
- 16 Animal droppings
- 19 Girl
- 21 Prepared
- 23 Oily fruit on pizza
- 24 Nut

- 26 Eager
- 28 Church caretaker
- 31 Of a city
- 33 Magnification
- 34 Numerical facts
- 38 Mind
- 41 Singlet
- 42 Travelled on a bike
- 43 Boxer
- 44 Coleslaw ingredient
- 48 Arbitrator
- 49 Meaning of =
- 51 Significant
- 53 Lawn trimmer
- 55 Fearless
- 56 Gilled animal

*Solution in Back of Magazine
Distributed by Auspac Media*



REDCLIFFE

YOUR BRISBANE ANTI WRINKLE

Our BAWSS Redcliffe Team understands the importance of looking the best for your age. We continually deliver impressive natural results through offering the latest in gold standard treatments and revolutionary products to clients conscious of their health, and anti ageing goals.

Collectively, we have over 40 years of experience within the cosmetic industry. Our team specialises in treating Acne, Scarring, Pigmentation, Rosacea, Wrinkles, Ageing, Saggy Skin, Dry Skin and Teenage Skin with our exclusive cosmeceutical range.

WE BELIEVE IN REAL RESULTS, NOT A QUICK FIX.

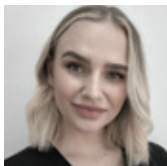
Your experience with us is the most important thing. We are not an express clinic, so we approach things differently and take the time to ensure the best experience for each client.

Whatever your aesthetic goal, we have the treatment and expertise to help you achieve it. Book in for your complimentary no-obligation consultation today and experience the BAWSS service for yourself.

MEET OUR COSMETIC NURSE TEAM



Brad's passion is driven by the desire to make clients feel the very best version of themselves. Understanding that every client has a unique goal in mind for cosmetic treatments and providing a personalised treatment plan for both his Male and Female clients based on natural and fresh looking results.



Brittany's sharp eye for detail and compassionate nature has been developed from over 7 years in the Beauty Industry. She combines Injectable and Skin treatments to deliver results and ensure her clients feel good on the outside, so they can shine from within.

COVID SAFE

Just like always, your safety and the safety of our staff is our highest priority, we have put in place some extra safety precautions to help you have treatments safely, and will continue to follow all government directives.



Sanitise your hands upon entering our clinics.



Maintain social distancing of at least 1.5m from others at all times.



Cashless payments only.



Please don't enter our clinics if you're displaying any symptoms of COVID-19.

Redcliffe
Shop 1, 73 Redcliffe Pde, Redcliffe 4020

07 3361 8174

redcliffe@antiwrinklebrisbane.com.au
www.antiwrinklebrisbane.com.au



A man wearing a dark suit, a white shirt, a dark tie, and a black fedora hat is crouching on a metal platform at a marina. He is looking down at a circular, yellow and black device (the Seabin) that is partially submerged in the water. The device has a black rim and a yellow interior. The water is calm, and the background shows a marina with other boats and structures.

THE Seabin PROJECT

Newport Marina

Luke Howarth MP with one the Seabin's installed in Newport Marina.

With ocean pollution being at the front of our minds, the federal government is doing their part in the Petrie electorate to combat this global problem and has recently taken a dive into the world of the Seabin. The government has been working alongside Australian company, Seabin Project, to recently install three Seabins at the Newport Marina, thanks to a federally funded environmental grant.

Luke Howarth MP said, "The Seabin is a revolution in ocean cleaning technology, helping to create cleaner oceans with healthier marine life and we are thrilled to be a part of the solution to affecting positive environmental change."

How does it work you might ask? Put simply, the Seabin moves up and down with the tide collecting all floating rubbish, holding up to 20kgs of debris when full. The estimated average catch is 1.5kgs per day, including microplastics down to 2mm small. This equals a whopping half

a ton of rubbish per year! The running cost is \$1 per day and is adaptable to run on solar power.

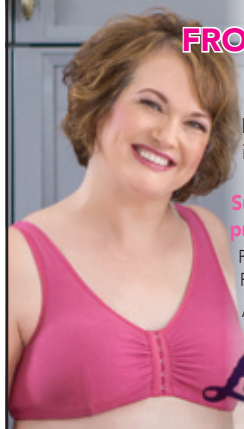
The idea was based on the thinking, 'if there are rubbish bins on land, why not in the water?' Over time, the scope of the project evolved into a comprehensive research, technology, and educational initiative with global interest and reach.

The world's marinas, ports and yacht clubs are the perfect place to start helping clean our oceans. With no huge open ocean swells or storms inside the marinas, these relatively controlled environments provide the perfect locations for Seabin installations.

"The problem of ocean litter is one that will have to be dealt with for generations to come and therefore, we need to provide the knowledge to the decision-makers of the future, our children. Together we have the power to fight this global issue and make a difference," Mr Howarth said.

Front Opening Bras

**WE CAN MAKE
ANY BRA
FRONT OPENING**



Full alteration service
Personalized bra fittings
in a convenient location
Call for inquiries

**Suppliers of mastectomy
prosthesis, bras and togs**

Prosthesis covered by Medicare
Payment plan options available
Amoena, ABC & Trulife brands

Lady Claire
Fashion & Lingerie

3284 3777

271 Oxley Ave **MARGATE BEACH**
www.ladyclairefashion.com.au

CELEBRATING 24 YEARS OF CULTURAL INTEGRITY



**DREAMTIME
KULLILLA
-ART**
ABORIGINAL ART/CRAFT
& NATIVE BUSH TUCKER

RETAIL SHOP/GALLERY

"THE CULTURE CAVE"

Unit 1/349 MacDonnell Road Clontarf
www.kullillaart.com.au

TRADING HOURS:

Monday - Friday 8:30am - 5:00pm
Saturday 9:00am - 2:00pm
Sunday CLOSED

AUTHENTIC PRODUCTS • HONEST PRICING • GENUINE SERVICE

WE GUARANTEE
AUTHENTICITY



ABORIGINAL ART



**Red Poppy
Art Collective**



**ORIGINAL AND UNIQUE
ARTWORK BY AUSTRALIAN
AND LOCAL ARTISTS**

- Paintings
- Pottery
- Sculptures
- Ceramics
- Glass
- Wood

And so much more...

0455 963 554

95 Redcliffe Parade, Redcliffe



contact@redpoppyart.com.au | www.redpoppyart.com.au



Local DINING GUIDE



161 Redcliffe Pde, Redcliffe

Bakery Café

Ph 3284 0166

BANJO'S BAKERY CAFÉ

Feature: Banjo's Redcliffe bake fresh on-site every day! Fresh breads, pies, pastries, sweets and salad products with delicious full-bodied coffee... Banjo's is the perfect place for breakfast, lunch or a treat anytime. Dine-in or take-away.



405 Elizabeth Ave,
Kippa-Ring

Bar & Kitchen

Ph 0477 635 013

BEARDY'S BAR & KITCHEN

Feature: Beardy's Bar & Kitchen is a one-stop shop for your culinary needs, caffeine fix and a place to quench your thirst. The bearded brothers prepare their food, fresh on-site. A relaxed venue with arguably the best burgers on the peninsula, fantastic coffee, drive through, live bands and a fully licensed bar.



Shop 2 / 77 Redcliffe Pde,
Redcliffe

**Homestyle,
Modern Australian**

Ph 3883 1515

BIKINI BEACH CAFÉ

Feature: We offer a variety of freshly prepared dishes for both breakfast and lunch in a warm, friendly, relaxed atmosphere.

All with breathtaking views across Moreton Bay.



165 Redcliffe Pde, Redcliffe

Tex Mex

Ph 3284 7990

CACTUS JACK'S

Feature: Great steaks, sizzling fajitas and authentic Mexican served with a full cocktail list and up to 16 Beers on tap.

Monday - Thursday 5pm 'til late, Friday and Saturday 11.30am 'til late, Sunday 8.30am 'til late.





97 Redcliffe Pde. Redcliffe
Restaurant, Tapas, Bar
Ph 3283 3284

LITTLE LAMB RESTAURANT

Feature: There's nothing little about us or our meals. With an extensive modern Australian menu and our own house beer, Lazy Lamb Pale Ale, on tap, we'll have you joining the Little Lamb Fam in no time.

Open for lunch and dinner until late 7 days, with breakfast starting at 7am Friday to Sunday.



Bird O'Passage Pde,
Scarborough
Steak and Seafood
Ph 3203 5188

MORETON BAY BOAT CLUB

Feature: Our dining showcases the very best in seafood, steak, ribs and pasta, with daily specials that will make your mouth water. Dine on our covered deck, sitting out over the serene waters of Moreton Bay, offering marina and mountain views.

Sunday breakfast from 7.30am, Lunch 7 days from 11.30am, Dinner Tues to Sun from 5.30pm.



Enjoy a Seafood bowl, Pasta or Steak with a schooner of house beer or glass of wine for \$22.90.

**We've got
the recipe
for a
GOOD TIME!**

Join us
Fridays
from
5pm



THE COFFEE CLUB®

This offer cannot be used on a public holiday or with any other offer, including our VIP discount of App rewards. Offer is valid with a Burger, Pasta or Rump Steak and selected schooner of beer or standard glass of wine only. Upgrades are available at an additional cost. This offer is for single use, redeemable in store Fridays after 5pm only at The Coffee Club Redcliffe. Expires 31st July, 2020.

Local DINING GUIDE



Bird Opassage Parade,
Scarborough

Fresh Seafood & Takeaway

Ph 3203 4592

MORGANS SEAFOOD

Feature: Morgans Seafood is the best place to enjoy seafood in Brisbane. Morgans are uniquely located right on the stunning Scarborough Boat Harbour dotted with luxury yachts, pleasure craft and commercial trawl fishing boats, and overlooks Moreton Bay and the Glasshouse Mountains. Fully licensed.



155 Redcliffe Pde, Redcliffe

**Modern Australian
& Mediterranean**

Ph 3284 2986

PREECE'S AT THE JETTY

Feature: We have the BEST Vanilla Slice in Redcliffe. All cakes, biscuits, slices & ice cream are homemade. Fabulous seaside location.

SPECIAL: three-course dinner deal Thur, Fri, and Sat nights for \$40, entree, main, and dessert.

Sunday-Wednesday: 5:30am – 4pm

Thursday-Saturday: 5:30am – 9pm



34 Anzac Ave, Redcliffe

Casual Dining

Ph 3051 7644

REDCLIFFE TAVERN

Feature: Redcliffe Tavern is serving up all the pub classics 7 days a week. Sunday - Friday lunches 11:30am-2:30pm and dinner 5:30pm-8:30pm. Saturday we have all day dining from 11:30am-8:30pm. Drop in for a flutter on the pokies or TAB as we are open 'til late.



89 Landsborough Avenue,
Scarborough

Eclectic Modern Café

Ph 3880 4770

SCARBOROUGH'S 3EIGHTNINE

Feature: Famous for our range of breakfasts and lunches, providing fresh seasonal dishes, dine while overlooking the beautiful Moreton Bay. We provide options for vegetarians and the gluten intolerant and do great functions.





Bird O' Passage Parade,
Scarborough

Seafood Restaurant

Ph 3203 5744

SEAFOOD RESTAURANT TEMPEST

Feature: A true trawler-to-plate experience. Seafood platters a specialty. Absolute waterfront location. All you can eat seafood buffet held on the last Thursday of each month. Seafood restaurant open 7 days lunch and dinner.



sea salt & vine

Reef Point Esp, Scarborough
(situated behind caravan
park)

Modern Australian

Ph 3880 4456

SEA SALT AND VINE CAFÉ

Feature: Looking for a tranquil place to enjoy a quality breakfast, lunch or relaxing coffee – overlooking the water with Glass House Mountains views? We are open 7am 'til 4pm every day.



141 Sutton Street, Redcliffe

Japanese, Sushi

Ph 3283 8188

SUSHI CENTRAL

Feature: Want to experience an amazing time with astonishing flavours? Come to Sushi Central at 141 Sutton Street Redcliffe and purchase a variety of products that cater to all your eating desires. Join us on Monday night and Tuesday for our \$3.00 specials. Open 7days for lunch and dinner.



ADVERTISE YOUR CAFÉ OR RESTAURANT



FROM \$80+GST
PHONE: 07 3338 5091

Local DINING GUIDE



Bluewater Square
Shopping Centre
20 Anzac Ave, Redcliffe

Authentic Japanese Cuisine

Ph 3889 4040

SUSHI NIKKO

Feature: Redcliffe's newest authentic Japanese cuisine experience. With over a decade of combined experience, come in and taste the difference.

Whether you're dining in or grabbing takeaway, Sushi Nikko is the place to go.

Open from 11am to 8pm – Monday to Saturday.



Suttons Beach Parkland
Marine Pde, Redcliffe

**Casual Beachside
Dining & Bar**

Ph 3284 3320

SUTTONS BEACH PAVILION

Feature: Relaxed, truly beachside venue with uninterrupted views across the Bay. The Pavilion has something for everyone, with a beachside Bar and Grill, Cafe, Fish & Chippery, Ice Creamery, the Rooftop Bathers Bar and Function and Wedding Centre. All serving modern, affordable, fresh food in a relaxed family-friendly setting. Come for a drink, stay for the food and view. Fully licensed – Open 7 days a week.



Tempest

Bird O' Passage Parade,
Scarborough

Teppanyaki Grill

Ph 3203 5744

TEMPESTTEPPANYAKI

Feature: It's a sizzling good time! Using the best local produce the chefs will transform the grill into a stage when performing a dining feast of entertainment.

Menu choices include multi-course banquets, create your own selection, and a lunch time bento box style. Lunch: Wed-Sun, Dinner: 7 nights



THAI HUT

Shop 3/265 Oxley Avenue,
Margate

Thai Restaurant

Ph 3284 5962

THAI HUT

Feature: Thai Hut has been on the Redcliffe Peninsula for over sixteen years. We reopened in August 2017 back to where we first started in 2000. Thai Hut cooks authentic Thai food. We do take-away, home deliveries and dine-in.

\$9.90 SPECIAL – Pad Prik Wan, Sweet & Sour.

Just one of our many lunch time specials.





23 Redcliffe Pde, Redcliffe
(Opposite Lagoon)

Ice-Creamery

Ph 3284 5859

THE BIG KID ICE-CREAMERY

Feature: Ice cream flavours for everyone!!! Over 30 delicious flavours to choose from.

Come on in and personalise your own milkshake... How about... White Chocolate and Tiramisu? YUM!!! Don't forget breakfast. Try our mouth watering waffles and fruit smoothies. Open 7 days a week for "The Big Kid" in everyone.



The Boat Shed

63 Landsborough Ave,
Scarborough

Fish & Chips

Ph 3880 0555

THE BOAT SHED SCARBOROUGH

Feature: All our fish is freshly cooked to order in our light tempura batter. Family packs available.

FISH & CHIPS - \$10

PENSIONER PACK - \$8.90

Open 7 Days 11am - 8pm
Holidays 11am - 3pm | 5pm - 7pm



Kippa Ring Shopping
Centre

Café

Ph 3283 4739

THE COFFEE CLUB KIPPA RING

Feature: At The Coffee Club Kippa Ring you can enjoy your favourite cafe meals and great coffee all day, every day. Open from 7:30am-5:30pm weekdays, late Thursday 7pm, and 8am-4pm weekends. So Meet You at The Coffee Club Kippa Ring.



ADVERTISE YOUR CAFÉ OR RESTAURANT



FROM \$80+GST
PHONE: 07 3338 5091



REDCLIFFE

Bites

Story **Kelly Livett**

REDCLIFFE WAR MEMORIAL SWIMMING POOL RENOVATIONS

The three pools at the Redcliffe War Memorial Swimming pool – a 50-metre pool, an 18.3-metre pool for learning to swim, and a baby wading pool – and other deteriorated sections of the complex will undergo renovations. The Moreton Bay Regional Council has budgeted \$234,200 for the completion of the renovations. The project is due to be completed in early-September 2020.

REDCLIFFE ART GALLERY AND COMMUNITY SPACE

The \$5.5 million refurbishments on the Redcliffe Art Gallery and Customer Service centre have been completed. The new centre, located between Irene and Downs Streets in Redcliffe, is expected to be a public community space and will contain the Art Gallery, University of the Third Age Redcliffe and The Seniors Computer Club. One excited local has said, "Another fantastic

asset for our community," and "It will be so good for the people of Redcliffe and definitely attract more people". Due to current restrictions, an official opening of the centre is expected to be announced later this year.

SEASCAPE MURAL

A beautiful new seascape mural was put up in Whytecliffe Parade in Woody Point in June. The mural was the work of Street Art Concepts and has many local residents excited to see it. Posts on social media were overwhelmingly supportive of the new art addition to the Peninsula, with one person saying, "Walked past it this morning. It is lovely and the colours are gorgeous."

BOARDMAN RD AND KLINGER AVE ROUNDABOUT REMOVAL

The council launched a proposal to remove the roundabout at Klinger Road and Boardman Road, planning to replace it with traffic lights. The proposed plan is estimated to cost \$4 million and will include other improvements to the direct area, such as tree cutting and road improvements around the suggested traffic lights. Community consultation on this project ended on 15 June. Social media had mixed reviews for the proposal. Some people were supportive of the plan, due to concerns for the number of accidents or near-

misses in the area. One person commented, "Good. It's a terrible roundabout. Especially when drivers don't understand how to use it."

There were those opposed to the proposal, citing issues with the potential of the lights causing more congestion in the area, with one resident saying, "More traffic lights to compound an already congested area".

WOMEN, WORK AND WELLBEING

The Deception Bay Community Youth Program is holding a free 6-day Zoom course for young women who would like to build their confidence, interests and skills, promote a positive mindset, and are looking to join or rejoin the workforce. The courses will run from the 13–15 July and the 20–22 July, 9am to 1pm. As this is an online course, you will need access to the internet-enabled device, ideally a computer. For more information or to register your interest go to dbcyp.org.au and find the course 'WOMEN, WORK AND WELLBEING' in their employability programs.

NEW DECEPTION BAY SCOUT HALL

The Deception Bay Scouts will get a new scout den after their previous hall was demolished due to considerable termite damage. The Scouts new home will be located at 18-24 George Street, Deception Bay. The estimated cost for the build is \$385,000 and will include facilities such as a kitchen, meeting room, storeroom, amenities, as well as disability access. The building of the new scout den was delayed due to COVID-19 restrictions but is expected to be finished sometime in October this year.

Would you like to contribute to Redcliffe Bites?

Is there something happening in the Redcliffe area you'd like to share? What are you talking about on social media or at the school gate? Email Kelly to be included in the next Redcliffe Bites at redcliffebites@kellylivett.com

Advertisement

FROM THE PULPIT

THE SIN VIRUS

Corona virus is very, very, bad, and is causing a lot of sickness and death in 2020. But there is a virus much worse and that is the "sin virus", and we ALL have it! [Romans 3:23] But God, in His love, has done something about it by sending His only Son, Jesus Christ, to be sacrificed for our sins on the cross to cleanse us from all sin. [1 Peter 2:24; John 3:16]

We sing

What can wash away my sin?
Nothing but the blood of Jesus.

What can make me whole again?
Nothing but the blood of Jesus.

Have you experienced His cleansing ?
[Rev. 3: 20]. Ask Him today

GRAHAM 3204 1644 • JOHN 3897 2962

u37/77 MORRIS ROAD, ROTHWELL



**REDCLIFFE
ACCOUNTING**

**See Rhonda
for all your
accounting
needs**

*** Wage Returns \$150**



e: rhonda@redcliffeaccounting.com.au
w: www.redcliffeaccounting.com.au

Ph 07 32 83 83 33

Shop 7 / 106A
Sutton Street, REDCLIFFE



function centre on Mt Mee Road, and like all of us they are looking forward to the end of the COVID-19 restrictions.

"COVID hit us very hard, especially the first month," Kate says. "We lost a lot of our staff but were still doing takeaway for the locals ourselves. Once the restrictions lifted, we started to get our staff back and knew we had to get creative."

" Our new chef Joel only started in December last year, and luckily he has a passion for pastry, so almond croissants and sourdough have saved us in this time."

For a day trip involving a coffee and a croissant, Mt Mee is the perfect place. But if you're keen to stay longer, you can book an overnight stay at one of the many accommodation options nearby, or even camp up the road at the D'Aguilar National Park.

This area offers a great selection of bush walks, trails and lookouts, as well as cafés, wineries and retreats.

Glengariff Historic Estate, a popular established function centre and winery, is also located on the winding Mt Mee Road, along with the acclaimed Birches Restaurant.

With Mt Mee being so close to Redcliffe, it makes a lovely day trip or weekend away. Enjoy a scenic drive, have a coffee and croissant and be home in a few hours, or take a weekend off, stay the night and chill out with wine or two!

Visit: parks.des.qld.gov.au/parks/daguilar/;
www.oceanviewestates.com.au/;
www.visitmoretonbayregion.com.au/natural-attractions/mount-mee-forest-reserve

FEEL LIKE A *Wine* THIS WEEKEND?

Story Philip Woods

We've all been cooped up inside for many recent weekends; with winter now upon us and our doors re-opening, why not head to the high country for a wine or beer tasting and some majestic views?

Just a short 40-minute drive away is Mt Mee, a charming village found on a beautiful winding road that travels between Dayboro and D'Aguilar. This region offers a lovely mix of rural farming and natural forest, along with some wineries and a brewery.

Kate and Thomas Honnef operate Ocean View Estates; a winery, craft brewery, restaurant and

3000 DL FLYERS

**PRINTED & DELIVERED
TO LETTER BOXES**

Special Offer

\$495 INC GST*

LOCALLY BASED
BUSINESS



**NORTHSIDE
PRINT • DESIGN**

0450 078 200

WWW.NORTHSIDEPRINT.COM.AU

• **OFFER VALID JULY 2020.**
EXCLUDES GRAPHIC DESIGN FEES.
CONDITIONS APPLY.



Lions Sunday Markets

Redcliffe Showgrounds

6.00am to 11.00am

Free on-site parking

Entry fee of 20c for adults goes
to local charities each week.

**Come for an early breakfast and browse
our stalls and fossick for bargains**

Enquiries 0418 191 578

or email

ChairmanR4S@lions.org.au



The Redcliffe Peninsula Harness Racing &
Sporting Club racing for over 50 years at
The Paceway.

Races are held Wednesday evenings,
Thursday afternoons and feature Fridays
and Saturdays (mid-year)

3284 4550

Gomersall Street, Redcliffe

redcliffehrc.com.au

redcliffehrc@optusnet.com.au



- Live harness racing
- Licensed Restaurant
- Café
- Well stocked bar
- Tote facilities
- Pokie machines
- Grandstand seating
- Air-conditioned
- Inside/outside seating



CHAMPIONSHIP TEE OFF

Pictured: Natalie Turnbull and Tyler Duncan, 2019 A grade champions

Story *Wayne I Flack*
Photo *Bruce Redman*

As many sports scramble to restart their game, Redcliffe Golf Club have teed off by announcing they'll hold their Club Championship Finals this July.

What better time of the year than during these winter months with the course simply looking at its majestic best.

Redcliffe Golf Club's director of golf Chris Adnams said this was the club's biggest championship of the year for a single event.

"Being the premier event of the year, members do look forward and get a buzz of excitement about them, as they do track their handicaps to

make sure they're in the right grade to have a crack at it," Chris said.

The championship finals are for men and ladies who have made it through the previous month's qualifying, quarter and semi-finals. Mens and ladies finals for A and B grade will be played up to thirty-six holes depending on the scores, with the C grade final played over eighteen holes.

Chris said this year was slightly different as they usually have a top sixteen playing, but with recent events affecting one of the rounds, they had to make it top eight.

"We as staff and management are very excited the championships are still able to go ahead, even with the shorter eight format," Chris said.

The club will look to put on a BBQ, with the clubhouse bar open for refreshments along with the halfway house. The halfway house is conveniently located at the top of the fourth hole with the sixth, seventh, eleventh and twelfth holes interconnecting, making it an excellent central hub for viewing.

Chris said the halfway house was well catered for with hot food, drinks and toilet facilities.

"People could go up there and park their carts, have a drink while watching the players go past, as well as someone being there keeping score," Chris said.

To keep abreast of the latest on the Golf Championships follow Redcliffe Golf Club's Facebook page.

For more information on the club visit www.redcliffegolf.com.

**2020 Redcliffe Club Championships
Mens and Ladies Grade Finals
Sunday 12 July, Tee off 8am
Redcliffe Golf Club
Handsworth Street, Clontarf.**

Pam's Affordable Gifts

DIECAST CARS • CLOTHES
JEWELLERY • JEWELLERY BOXES
INCENSE • MOSAIC MIRRORS
NIGHT LIGHTS & lots more...

Something for everyone!

3/120 SUTTON ST REDCLIFFE

Monday – Friday 10am – 5pm

Saturday – 9.30am – 4.30pm

Sunday – 9.00am – 4pm

0418 797 241 



GORMAN REMOVALS

ESTABLISHED 1962

- Local & Interstate Moves
- Storage Facilities
- Owner Operated

Careful | Reputable | Reliable

Call John Gorman or one of his experienced
staff members for a quote today on

3480 2333

www.gormans.com.au

G.R. Brown Solicitor

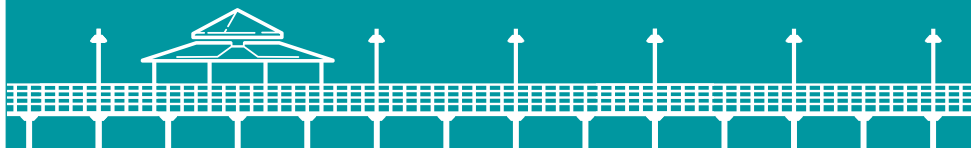
WE CAN ASSIST YOU IN THE FOLLOWING LEGAL AREAS:

Wills | Estates | Conveyancing | Property Law
Family Law | Neighbourhood Law | Domestic Violence
Driver Licensing | Enduring Power of Attorney

📍 Suite 5, Sandgate Arcade
16 Brighton Road
Sandgate Qld 4017
(Cnr Brighton Rd & Second Ave)

☎ 3269 1588
✉ grb@grbrown.com.au
🌐 www.grbrown.com.au

📞 **3269 8511**





MAJOR EVENTS – *When Will They Be Back?*

Story *Donna Roberts*

Coronavirus restrictions have meant that many local events have had to be cancelled or postponed. Moreton Bay Region Industry and Tourism (MBRIT) is the organisation behind many local annual festivals and gatherings.

MBRIT CEO Shane Newcombe has expressed regret for the event cancellations.

"The rapid escalation of the COVID-19 pandemic has created an exceptional set of circumstances for many of our events and festivals," Mr Newcombe said.

// Unfortunately, like the rest of the world, Moreton Bay Region has not been immune to the impacts the crisis is having on the events and tourism industry."

Events cancelled in the local area so far include:

- Hills Festival (including Hills Carnivale and festival events)
- Redcliffe KiteFest
- Redcliffe Garden & Lifestyle Expo
- Caboolture Festival (including festival events)
- Moreton Bay Food + Wine Festival

Currently, the Jetty 2 Jetty Fun Run has been postponed, with a view to rescheduling the event later in the year.

"We acknowledge that the cancellations are regrettable and a disappointment to many local families, businesses and suppliers, however, the safety and welfare of guests is our number one priority," Mr Newcombe said.

At this stage, events from October 2020 have not been cancelled, however, MBRIT is closely monitoring the COVID-19 situation.

99.7 Bridge FM

is YOUR Community Radio Station



CONNECT
WITH US TODAY!

Playing the BEST classic rock *and* connecting you with your community

BROADCASTING TO THE GREATER BRISBANE NORTH AND MORETON BAY REGIONS

phone: 3284 5000 | www.997bridgefm.com | 99.7 Bridge FM

JULY TIDE TIMES

1 0540 2.03
1212 0.40
WE 1846 2.33

2 0109 0.66
0642 1.96
TH 1306 0.36
1941 2.46

3 0214 0.59
0740 1.90
FR 1356 0.34
2032 2.55

4 0311 0.53
0835 1.86
SA 1443 0.33
2119 2.60

5 0402 0.50
0926 1.83
SU 1526 0.35
2202 2.60

6 0449 0.51
1012 1.81
MO 1607 0.38
2244 2.56

7 0532 0.53
1056 1.80
TU 1645 0.44
2322 2.48

8 0610 0.57
1136 1.78
WE 1722 0.51
2359 2.39

9 0646 0.61
1217 1.76
TH 1800 0.60

10 0035 2.28
0721 0.65
FR 1259 1.75
1840 0.70

11 0111 2.17
0758 0.67
SA 1345 1.74
1927 0.81

12 0151 2.05
0840 0.68
SU 1440 1.75
2023 0.91

13 0237 1.92
0927 0.67
MO 1544 1.79
2133 0.98

14 0333 1.82
1020 0.65
TU 1651 1.88
2251 0.98

15 0437 1.75
1114 0.61
WE 1752 2.01

16 0005 0.91
0539 1.72
TH 1205 0.55
1845 2.15

17 0108 0.81
0635 1.72
FR 1254 0.49
1932 2.28

18 0201 0.71
0726 1.75
SA 1341 0.43
2016 2.40

19 0251 0.63
0814 1.78
SU 1425 0.38
2059 2.49

20 0337 0.56
0901 1.81
MO 1509 0.33
2141 2.56

21 0422 0.51
0947 1.85
TU 1553 0.31
2223 2.60

22 0506 0.47
1035 1.88
WE 1637 0.31
2306 2.61

23 0550 0.45
1122 1.91
TH 1722 0.34
2348 2.57

24 0633 0.44
1211 1.93
FR 1809 0.41

25 0031 2.49
0716 0.44
SA 1303 1.94
1900 0.51

26 0116 2.36
0800 0.45
SU 1359 1.95
1958 0.63

27 0206 2.19
0848 0.47
MO 1504 1.99
2106 0.74

28 0303 2.02
0942 0.47
TU 1615 2.06
2226 0.79

29 0411 1.87
1041 0.47
WE 1726 2.17
2351 0.77

30 0523 1.77
1143 0.46
TH 1831 2.30

31 0108 0.68
0633 1.74
FR 1244 0.43
1929 2.41



NORTHSIDE
PRINT • DESIGN

0450 078 200
NORTHSIDEPRINT.COM.AU

HISTORY



Rev. John Sutton

Pioneers of Redcliffe

Story *Hellen White*

Do you ever wonder who the people were behind the names on our streets and buildings? Who are the faces of our Redcliffe history?

John Street, Sutton Street, Suttons Beach, Sutton House — who is the man behind these names? One of the first to purchase land on the peninsula, Reverend John Sutton developed a life-long interest in the development of Redcliffe and was ultimately responsible for the placing of the central business district on the foreshore.

John Sutton was born in Berkshire, UK, in 1817 and as a young man, he studied Arts at Oxford.

When Queen Victoria appointed Sir George Ferguson Bowen as the first governor of the new colony called Queensland, she also created the Archdiocese of Brisbane, to which she appointed the Right Reverend Edward Wyndham Tufnell as its first bishop.

Tufnell sailed for Sydney on the “Viermiera” with seven clergymen, one being the Rev. John Sutton, then aged 42. During the five-month voyage, Sutton made friends with Frances (Fanny) Johnson, 18, daughter of an aide to Governor Bowen, who was sailing out with her siblings and chaperone to join her widowed father. The chaperone thought nothing of the friendship because of the age difference, but it was a true romance.

The bishop, six clergymen (one had died on the voyage), the Johnson family and the chaperone sailed for Brisbane on the “Yarra Yarra” on 29 August, arriving in Brisbane on 2 September. Rev. John immediately went to Government House to call on Frances’ father to ask for her hand in marriage. They married in 1861 and had 11 children. (Three died in infancy.)

Rev. John had several postings in Queensland, including Gladstone and Brisbane.

In late 1865, Rev. John purchased 21 acres on what is now the northern side of Klingner Road. This cost him 21 pounds. In 1869 he purchased two more farming portions on Redcliffe Peninsula. One was 26 acres on the seafront, north of what is now MacDonnell Road and bounded by what is now Oxley Avenue. Another 20 acres was bounded by the seafront and Humpybong Creek. Over the years, several more parcels were purchased. Much of this land was eventually subdivided and auctioned off.

During his semi-retirement in the early 1880s,



Circa 2001, courtesy Ian Harding

Rev. John moved permanently to Redcliffe and eventually built a fine house in front of the one his family had originally lived in. “Hurley House” became “Sutton House”. The younger children attended Humpybong Provisional School. John Sutton was increasingly involved in council and local business and was a member of the church building committee. He donated the land for St Mary’s Church but sadly did not live to see the beautiful building come to being, dying in June 1897.

Redcliffe 160 Years’ by Leslie Slaughter, 1959

Thanks to the Redcliffe Historical Society.

OFFER
VALID JULY
2020

**DOES OPPORTUNITY
KNOW HOW
TO FIND YOU?**

**1000
BUSINESS
CARDS**

Premium Quality • Printed on 2 sides
Matt or gloss cello on 2 sides

• ON SALE **\$99**



NORTHSIDE
PRINT • DESIGN

0450 078 200

WWW.NORTHSIDEPRINT.COM.AU

LOCALLY BASED
BUSINESS

• PRICE EXCLUDES GRAPHIC DESIGN WORK



FISH OF THE MONTH

Longtail Tuna

Thunnus tonggol

Story **Peter Hansler**

One of the better tasting fish we pull out of Moreton Bay is the Longtail Tuna, formally known as Northern Bluefin Tuna.

Caught from between northern NSW right around the top of Australia to WA, these fish are great speedsters when hooked, and never give up fighting all the way to the boat. They have been responsible for many sore arms and backs after a drawn-out fight.

Growing to just over one meter and up to 25kg, we rarely take more than one fish home to eat. Most fish we catch are a bit over 10kg.

They can be caught by trolling lures or sight casting. My preferred method is live bait on the surface or just below. They are very frustrating to chase around when they are surface feeding, trying to get close enough to throw lures at them without spooking them. This is why I prefer the method of live baiting around the

general area where I have seen them, or where I have seen birds working and drifting into them.

Four out of five stars eating quality for me. I have fried some in Southern Style Chicken Coating and someone actually thought it was chicken. How good is that?

Peter Hansler is a local "fish enthusiast" who promotes and educates about our native fish and responsible angling via his website rainbowrunner.ausfish.com.au. If you have a question for Peter you can reach him via email at phansler@hotmail.com.



Lic. No. 73554



Family owned and locally operated in the Moreton Bay Region for over 12 years





- ✓ Residential
- ✓ Commercial/Industrial
- ✓ Property Management

07 3053 3118
rob@northlakeselectrical.com
www.northlakeselectrical.com



3000 DL FLYERS
PRINTED & DELIVERED TO LETTER BOXES

Special Offer
\$495 INC GST*

NORTHSIDE PRINT • DESIGN

0450 078 200
WWW.NORTHSIDEPRINT.COM.AU

* OFFER VALID JULY 2020.
EXCLUDES GRAPHIC DESIGN FEES.
CONDITIONS APPLY.

LOCALLY BASED BUSINESS

Enjoy a Seafood bowl, Pasta or Steak with a schooner of house beer or glass of wine for \$22.90.

We've got the recipe for a GOOD TIME!

Join us Fridays from 5pm



THE COFFEE CLUB®

This offer cannot be used on a public holiday or with any other offer, including our VIP discount of App rewards. Offer is valid with a Burger, Pasta or Rump Steak and selected schooner of beer or standard glass of wine only. Upgrades are available at an additional cost. This offer is for single use, redeemable in store Fridays after 5pm only at The Coffee Club Redcliffe. Expires 31st July, 2020.

TAX WITH TIM

5 THINGS TO DO NOW TO MAKE TAX TIME 2020 LESS TAXING



It is important to consider your cash flow from now until Christmas 2020. Do up a personal budget to ensure that you can get to Christmas in a healthy financial position.

Remember, tax impacts the cash flow, so keep records of your receipts and expenses (deductions). Here are five things you can do now to get you and your business through the next six months:

Set yourself up for success.

We see many new businesses launch in the new financial year, which can excite. However, due to the uncertain nature of the economy, a backup plan is needed to ensure that not only the business gets a good kick-start, but that it can survive a future pandemic. So, set up your business accounting software right from the start. Invest in training to boost your knowledge and create consistent good habits. Always start with as much of a war chest as you can.

Understand the difference between GST, income tax and PAYG withholding and PAYG Instalments.

Businesses may have all, some or none of these obligations. Don't assume you know the difference, or rely on advice from your long-lost relative at the family BBQ. Your tax agent is the best person to explain all of these.

Set up separate bank accounts to save money for GST and income tax.

Out of sight, out of mind. This means paying the ATO is much less stressful as you will already have the funds set aside outside of your normal business operations.

Know who can help you.

Do you need a tax agent or a BAS agent (Bookkeeper)? It all depends on what help you need. But getting unqualified advice could be detrimental to your business viability.

Make sure you take advantage of all the COVID-19 stimulus measures.

If you employ staff, are you able to get the cash flow boost (minimum \$10,000)? If your turnover decreased by 30% in just one month compared to a previous month, then can you enrol for Jobkeeper?

I suggest talking to your accountant about your tax position, wealth position, and estate planning as you head into the next financial year.

TIM WILSHIRE

CTBS Confidential Tax & Business Services

07 3267 2111

realestate

FREE JULY 2020

GUIDE

HOUSE OF THE MONTH P.53

SEA BREEZE DISPLAY

**175 QUAY CIRCUIT
NEWPORT**

 kindred

kindred.com.au



Adam's property of the week

15/23 Albert Street, Margate

 3  1  2

Available now: \$629,000+

Adam Clark-Lynch
0412 291 364





CROWN
PROPERTIES

REAL ESTATE

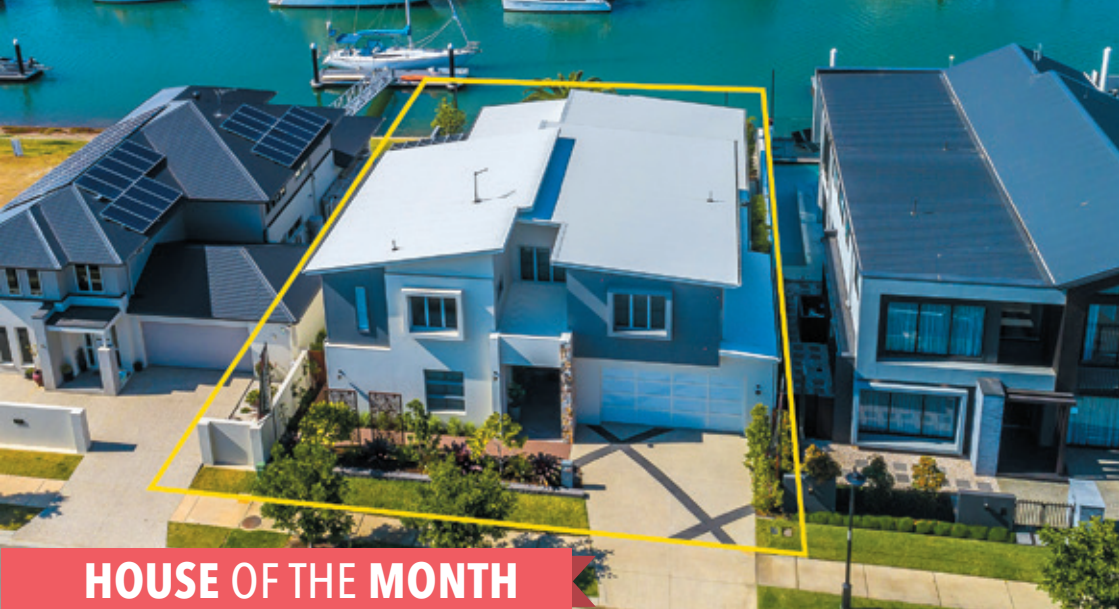
- ✓ **All inclusive packages**
- ✓ **No upfront fees**
- ✓ **Competitive commission rates**



YOUR REAL ESTATE SPECIALISTS

Phone: 3283 3313

www.crownpropertiesqld.com.au



HOUSE OF THE MONTH

175 QUAY CIRCUIT NEWPORT



Award Winning Display Home in Newport

Agent: *Ian Mclachlan*

The prestigious Sea Breeze display home spans across 478.93 m2 of luxury canal living. Set out over 2 levels, consisting of 5 bedrooms, 3.5 bathrooms and a spacious double garage. The innovative award-winning open plan is designed for the Queensland lifestyle.

Entertain in style with the spacious outdoor BBQ area overlooking the sparkling in-ground pool.

From the moment you walk through the door this home exudes luxury with the sweeping timber staircase, high ceilings and massive open living area that flows out through the glass stacker doors. The gourmet chef's kitchen with butlers pantry is sure to impress the fussiest of home cooks.



Not up for a BBQ and swim? The choices are aplenty with the option to sit back and enjoy your favourite show or a movie in the fully-equipped media room.

This property is ideal for the serious boat owner with direct access to Moreton Bay and is suitable for high mast vessels.

AGENT: IAN MCLACHLAN
CROWN PROPERTIES

0419 781 834 | IAN@CPQLD.COM.AU

The fabulous Sebel waterfront hotel, a fine example of land usage on the Margate sea front.



FROM THE INSIDE OUT

In my 13 years of living on the Redcliffe Peninsula, I have seen enormous changes to the area...

The cafes and restaurants that have increased in popularity; the fabulous apartments that have been built more than 11 stories high.

The eight supermarkets that are well patronised; the Sunday markets that have a sea of people attending; the waterfront and park attractions that get well supported and are family orientated.

I often get asked, "What's it like to live on the Peninsula?"

My answer is very simple – it's a great mix of families to retirees – we have plenty of good schools, professionals, doctors etc., an ever-increasing size hospital that is second to none, an industrial area covering every business sector you need, the train and bus services to outer and inner areas, and close proximity to Northlakes and Chermside shopping malls.

We are very fortunate to live in such an easy area and be close to the waterfront, with amazing water to look at every day.

My children attended Humpybong State School on the waterfront and enjoyed the sun and fresh

sea air all day long, well before they installed air conditioners.

There is a growing demand for land to build new homes on, and a lot of fibro homes are being replaced with new builds for the young families.

The new architectural childcare centre in Scarborough is a reflection of the demand for new homes in the area.

Traders in Purple have really changed the Peninsula's apartment demand with their developing and building of many waterfront high-rises. They have helped tremendously in improving the area and bringing in upmarket styles, colour schemes and designs. The Sebel is a very good example of this with the Traders in Purple architects' design.

I prefer living here – it's close to Brisbane city if needed, but without living in the big city. The airport and entertainment centre are all within a 30-minute drive with the newly upgraded motorway, which makes for quick travel.

I see myself living here for years to come and enjoying our beautiful seaside of Redcliffe.

OWNER, ANYA COORY

WAVE REALTY

Ph: 0407 733 244

A new build, upmarket childcare centre located on Oxley Ave, Scarborough.



BAYWATER RESIDENCES

30-32 Prince Edward Parade, REDCLIFFE

Actual 2nd floor view



NOW SELLING



- ~ 230m2 Internal living
- ~ 90m2 East facing balconies
- ~ Ducted & zoned air-conditioning
- ~ Quality fixtures & fittings
- ~ 2 or 3 Car lock-up garages
- ~ Lock-up storage

**18 Absolute
Beachfront
Luxury Apartments**
Due for Completion DEC 2020

For further information contact

KEVIN BOSTOCK 0418 125 356



waterfront
properties
redcliffe

LOCAL PROPERTY MARKET REVIEW

Story **Stephan Siegfried**

.....

For a good ten years, I've been writing this column each week in a publication that, after 80+ years, has just announced will no longer be printed. COVID-19 has impacted so many things in our world and the way we do things, some for the better and some for the worse.



Stephan Siegfried

When it comes to the local property market many people ask me, "What is going on?". The mainstream media has continued to predict doom and gloom for the property market as they have for the last four or five years. Predictions of potential crashes have been grossly exaggerated, as have

the impact of Covid-19 death rates in Australia, potential stock market corrections and so many other things. Of course, having got it so wrong, these so-called "experts" have now shifted the impending doom prediction for property to sometime later in the year. My view, surely it's about time the sensationalist press give up on the "crystal ball gazing" and report what is actually happening on the ground?

So what is really going on? Since my last column, there has certainly been interesting times. For four or five weeks through late March and April there was a lot of uncertainty. Open homes were no longer allowed and even local people were unable to travel any real distance to view a property. Naturally, this had an impact on viewing rates and also held back many people from making purchasing decisions.

With the easing of restrictions and a return to more normal patterns of business, the buyers have returned in force, with inspection levels higher across the board than even earlier in the year pre-COVID restrictions. Stock levels are still tight but this is easing a little as sellers regain enough confidence to put their homes on the market. Sales volumes have been lower in the last few months, but have really started to pick up in the later part of May and into June. Prices do not appear to be falling, in fact we can say confidently they remain at pre-COVID levels, probably even a little stronger. As the results from new completed sales start to trickle through this will be evident in the statistics.

So what happens going forward? I do not have a crystal ball but I can say that TODAY things are good and there is strong buyer confidence in the market. When our borders re-open we will see increased activity from interstate buyers further strengthening our local market. There is not much more to say other than thank you for still reading and I look forward to writing further reviews in the Redcliffe Guide. Have a great day.

STEPHAN SIEGFRIED

ONE AGENCY REDCLIFFE

07 3284 3000

SCARBOROUGH SNAPSHOT

12 House sales recorded

Highest Sale Price **\$1,200,000**

Median Sale Price **\$565,000**

7 Units sales recorded

Highest Sale Price **\$1,365,000**

Median Sale Price **\$460,000**

NEWPORT SNAPSHOT

8 House sales recorded

Highest Sale Price **\$1,495,000**

Median Sale Price **\$1,100,500**

4 Vacant Land Sales Recorded

Highest Sale Price **\$515,900**

Median Sale Price **\$322,700**

Sales recorded March.

Correct as of 15/06/2020. Source: Corelogic.

THINKING OF SELLING?

Call Clinton Viertel, Agent of the Year 2020



**226 Prince Edward Pde,
Scarborough**

3 Bed, 2 Bath, 2 open car space

Price: \$900,000 + Buyers

Positioned in a prime seaside location on millionaires row, only a minutes walk to the shimmering foreshore, the home presents with a coastal contemporary facade and great curb appeal.



**22 Spinnaker Blvd,
Newport**

4 Bed, 2.5 Bath, 2 Car Garage

Price: \$1,190,000

Hampton's Luxury Metricon ex-display home with resort pool & wide side access for boat or caravan - this unique opportunity won't last!

Clinton Viertel & Dianne Clarke from Belle Property have been listing and selling across the Peninsula during COVID-19.

Call us for a current market appraisal on your home today.

CLINTON VIERTEL 0401 200 222

Principal
clinton.viertel@belleproperty.com

DIANNE CLARKE 0418 767 853

Real Estate Agent

BELLE PROPERTY REDCLIFFE

67 Redcliffe Parade
3060 7707 | info.redcliffe@belleproperty.com

belleproperty.com/redcliffe

belle
PROPERTY



TRADES & HOME SERVICES

DIRECTORY





*We Love
Landscaping*



OFFER:

All completed
projects over \$5,000
will receive
12 months supply
of fertiliser



- Retaining walls
- Gazebos
- Fencing
- Decks
- Water features
- Paving
- Concreting
- Green Walls
- Lawn & Garden Construction
- Irrigation

26 years in the industry
Trade qualified staff
QBCC Licence # 1053870



 Find us on
Facebook

www.faceliftlandscapes.com.au | info@faceliftlandscapes.com.au

Dean 0411 237 824

THE LOCAL 24 HOUR
ELECTRICIAN YOU CAN TRUST



Call Now

0437 731 830

WWW.JKELECTRICALQLD.COM.AU

INFO@JKELECTRICALQLD.COM.AU

NEED AN ELECTRICIAN?



REVERSE CYCLE AIR CONDITIONERS

KELVINATOR <i>Supplied and Installed INC GST</i>	MITSUBISHI <i>Supplied and Installed INC GST</i>
2.5KW \$1266.00	2.5KW \$1485 INC GST
3.5KW \$1377.00	3.5KW \$1645 INC GST
5.0KW \$1644.00	5.0KW \$1950 INC GST
7.1KW \$2265 INC GST	7.1KW \$2265 INC GST
7.1KW \$1838.00	8.0KW \$2695 INC GST

We install customer supplied air
conditioners from \$650.00 gst incl.

Includes 5 YEAR MANUFACTURER'S WARRANTY
*** STANDARD INSTALL ONLY/CONDITIONS APPLY**



TALK TO US ABOUT ANY OF
YOUR POWER NEEDS



SAVE MONEY
BY CONVERTING
TO LED'S

IS YOUR SMOKE
ALARM STILL
IN DATE AND
WORKING?



Free

ELECTRICAL SAFETY
INSPECTION INCLUDED
WITH EVERY JOB



ACN 625 252 020
Licence No.: 85290
Air Conditioning Licence: ARC 1087988

WE ALSO SUPPLY THESE BRANDS



Panasonic

DAIKIN



MITSUBISHI





**Residential & Commercial Construction
Design & Construct**

27 years experience in all aspects of construction

- Residential Builder
- Commercial Builder
- Industrial Builder
- Civil Structural
- Renovations
- Extensions



MASTER BUILDERS
QUEENSLAND
QBCC 1082769

Paul Hoffman (Director)

Ph: 0401 316 886 • e: paul@hoffbuild.com.au

www.hoffbuild.com.au | facebook.com/46F32ui53

ARBORICULTURAL SERVICES Swann's

- Storm Work
- Stump Grinding
- Tree Pruning
- Tree Removals
- Palm Cleaning
- Real Estate Work
- Qualified Arborist
- Fully Insured
- Family Owned and Operated
- Obligation Free Quotes



e. swanfamilytrust@optusnet.com.au

p/f. 07 3869 0267

m. 0422 099 444



Before



After

ROOF RESTORATIONS

Transform your tired old roof with a
value boosting makeover

Full Roof Restorations From only \$2,000

- Replace Broken Tiles
- High Pressure Clean
- Re-bed Ridge Capping (if required)
- Re-point Ridge Capping
- Sterilise Surface (if required)
- Apply Primer/Sealer
- Apply New Roof Membrane (2 coats)

Tile & Metal Roofs

Call Richard today and
arrange your no obligation
free quote!

All roofs age over time. After around 15 years, tile roofs deteriorate to the point where a restoration should be considered. At this age, colour starts to fade, ridge capping becomes brittle, lichen and mould can grow, and tiles become harder to clean. The appearance of your home suffers and your roof is more likely to develop leaks.

Richard Gabriel from Mr Highlights Roofing has over 20 years experience in the roofing trade. He uses only premium quality products for his restorations, and offers a full 10 year warranty on all workmanship and materials.

Richard is an owner/operator and doesn't employ salespeople, so costs are kept to a minimum which means **savings for you!**



MR HIGHLIGHTS PTY LTD

ROOF RESTORATION & REPAIRS

EXTERNAL & INTERNAL PAINTING

M: 0402 469 801

P: 3203 1133

www.mrhighlightsroofing.com.au



Richard Gabriel

5% Seniors Discount

QBCC Lic no.1278416 Fully Insured



LOCAL DIRECTORY

AIR CONDITIONING



SAFE & SURE
ELECTRICIANS • AIR CON • SOLAR
"gentlemen in the trade"

Proudly Servicing Redcliffe
1300 507 735
Lic No. 72504
www.safe-sure.com.au

ELECTRICIANS



SAFE & SURE
ELECTRICIANS • AIR CON • SOLAR
"gentlemen in the trade"

Proudly Servicing Redcliffe
1300 507 735
Lic No. 72504
www.safe-sure.com.au

BOATING SERVICES & SALES



ONE STOP MARINE SHOP
3880 0111 | info@boatharbourmarine.com.au
• bait • tackle • rigging • ice • paint • plumbing • hardware & more!
Thurecht Pde, Scarborough Marina
LOOK FOR THE RED FLAGS
OPEN 7 DAYS
from 7am

ENGINEERING & DESIGN SERVICES

MECHANICAL/STRUCTURAL DESIGN
3D LASER SCANNING

CADdicts
DESIGN RESOLUTIONS FOR INDUSTRY & MINING
0402 918 260
www.caddicts.com

BUTCHERS

JASON'S
QUALITY MEATS
FREE RANGE SPECIALIST

Phone
3269 2049
10 Queens Parade
Brighton

HAIR & BEAUTY

BRISBANE ANTI WRINKLE & SKIN STUDIO . 3361 8174
Shop 1, 73 Redcliffe Pde, Redcliffe

HANDYMAN

CRUSADERS PROPERTY MAINTENANCE
General Property Jobs - Call Frank . . 0480 247 429



HANDYGUS
HANDYMAN SERVICES

- General Home Maintenance
- Experienced Help When You Need It
- Quality Work At Reasonable Rates

Call Gus on 0418 451 177

HEALTH & WELLBEING

INSPIRED CLARITY 0410 756 798
Psychic Readings and NLP Life Coaching with Jennifer

IRRIGATION



automatic
WATERING
systems

Automatic Watering Systems for
Gardens, Lawns and Balconies
FREE ONSITE INSPECTION & QUOTE
Call **David Emanuel** today! **0415 533 917**

LAWN MOWING & GARDENING

HANDYDAN LAWN SERVICE. 0433 185 329
Lawns, Pressure Washing & more

LAWN MOWING & GARDENING

GARDENER

Lawn Mowing, Trimming, Pruning, Weeding, Tidy Ups,
Gutters Cleaned. Professional, Insured, Reliable,
Free Quotes, Pensioner Discounts.
Call Jason: 3885 4273 or 0431 516 075

CAFES & RESTAURANTS

MORETON BAY BOAT CLUB 3203 5188
Bird O'Passage Pde, Scarborough

CLEANING SERVICES




ovenu
Oven Cleaning & Detailing Service

We Clean Ovens
...so you don't have to!
CALL TODAY 1300 683 681 www.ovenu.com.au
enquiries@ovenu.com.au

COMPUTER SERVICES

ECO COMPUTERS - CALL ROWAN . . . 0421 555 419
Repair/Support/Upgrade ecocomputers.com.au

ELECTRICIANS



gold
ELECTRICAL PTY LTD
ELEC LIC: 67648

SAME DAY RESPONSE
24 HOURS | EXPERIENCED
GENUINE | RELIABLE
CALL RICHARD - 0403 889 716



JK
ELECTRICAL

24 HOUR SERVICE & MAINTENANCE
DOMESTIC / COMMERCIAL
UPFRONT PRICING / FREE QUOTES
0437 731 830

MARINE SERVICES & SALES



Your One Stop Boating Megastore

2294 Sandgate Rd, Boondall,
QLD, 4034

Tel: 07 3265 8000 Web: nsmarine.com.au

PAINTERS

BRAMBLE BAY PAINTING SERVICE

Big or Small Jobs Welcome

Pat 0411 542 699 - Shaun 0412 648 676

QBCC
1094100



IDEAL
painting
solutions
QBCC 15071871

For All Your Painting Needs!

For a FREE QUOTE call

0400 926 558

PEST CONTROL



QBCC#15047832

Scarborough Pest Control

INCLUDING TERMITES

Ph: 3203 8378

Local and Family Owned

PLASTERING SERVICES



- Repair work to plaster & cornice
- Small job specialist

The Patchit Man Call John
Mob. 0417 746 373

BSA Lic No. 54998 ABN 90 557 580 685

PLUMBERS

AAA PLUMBERS & GAS 0400 124 122
No Job Too Small - Call Bruce on 3261 1915

PLUMBING SENSE SOLUTIONS PTY LTD

JOEL SCOTT 0411 708 810

DOMESTIC and COMMERCIAL MAINTENANCE | HOT WATER SYSTEMS | BLOCKED DRAINS
LEAKING TAPS AND TOILETS | WATER SUPPLY | BATHROOM RENOS

QBCC 15118080

plumbingsensesolutions@outlook.com

PRINTING SERVICES

NORTHSIDE PRINT & DESIGN 0450 078 200
Flyers, Business Cards, Brochures and more

RETAIL

Pam's
Affordable Gifts



3/120 Sutton Street, Redcliffe **0418 797 241**

SUPERMARKETS

SEASONS IGA CLONTARF . . www.seasonsIGA.com.au
20 Elizabeth Ave, Clontarf

SEASONS IGA REDCLIFFE . . www.seasonsIGA.com.au
82-98 Anzac Ave, Redcliffe

ROOFING



D & B
Roof Repairs
And Restoration

10 YEAR WARRANTY
on products &
workmanship

Specialize in

- Roof Repairs
- Roof Painting
- Gutter Replacements
- Roof Tile Extensions
- Gutter Guard Installations

Call Danny on **0421 833 301**

ABN 63536355966 QBCC 15121203

SOLICITORS



LEGAL SERVICES

We come to you...

Flexible hours including weekends

Buying or Selling? Contact Bridge Legal
Also Specialising in SMSF/Wills & Estate
Planning/Probate

Ph: 07 3062 2803

Email: bmc@bridgelegal.com.au



LOCAL DIRECTORY

SOLICITORS

G.R. Brown Solicitor

07 3269 8511

www.grbrown.com.au

Property Law | Family Law | Wills & Estates

Suite 5, Sandgate Arcade, 16 Brighton Road, Sandgate

RUBBISH REMOVAL

REDCLIFFE E-WASTE SCRAPPING

SERVICES ~ PC'S ~ LAPTOPS ~ LCD TV'S ~
TABLETS ~ MOBILES ~ PHONE SYSTEMS~
Other Electronics please enquire



FREE PICKUP 0402918260

STRATA/BODY CORPORATE MANAGEMENT



CAPITOL BODY CORPORATE ADMINISTRATION

5/77 Redcliffe Parade (Dakis Arcade) REDCLIFFE

For all your body corporate management needs,
call us now for a quotation.

Ph 1300 55 10 19 • www.capitolbca.com.au

TILERS

TOLLIS TILE & DESIGN 0449 180 873
Bathroom Renovations - Call Glen

THE BIG ONE CROSSWORD ANSWER KEY

B	L	U	E	S		S	T	R	I	P	E	D		S	T	U	F	F
E	N	P		T		E	R	A	U	S								
L	A	C	Q	U	E	R	E	D		I	N	D	U	C	T	I	V	E
L	A	R	A	H	S		A	C	N	S								
I	M	P	R	I	N	T		O	H	M	S		L	E	N	G	T	H
G			O		A	L	T	O		C			E					
E	A	R	F	U	L		A		S	O	A	P		D	I	Z	Z	Y
R	E	S			S	V	E	L	T	E		I		E				
E	X	A	M		F	U	S	E		I		C	O	N	C	A	V	E
N	D		S		R	E	V		A	G	L			N				
T	W	I	N	T	U	B		G	E	T	N	A		W	O	O	L	
			E		A		A	V	E	R	S	E		P	U		A	
C	A	D	E	T		N	E	R	O		N		P	U	R	S	E	R
A			I		S		D	U	D	E		G						
B	E	M	U	S	E		T	E	E	M		Q	U	I	B	B	L	E
B		A		T		F		D		P	U	L		R				
A	D	J	O	I	N	I	N	G		I	N	A	N	I	M	A	T	E
G	O		C		S		E	R	L		S		V		N			
E	A	R	N	S		H	A	R	N	E	S	S		T	R	E	A	T

THE LOCAL 24 HOUR
ELECTRICIAN YOU CAN TRUST



Call Now

0437 731 830

WWW.JKELECTRICALQLD.COM.AU

INFO@JKELECTRICALQLD.COM.AU

NEED AN ELECTRICIAN?



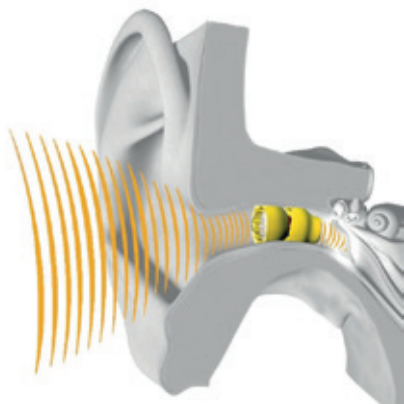
Sandgate Hearing

Ph: 3603 1370 | 8 Nash Street, Sandgate

• Test • Aids Fitting/Repairing • Lyric



Phonak Lyric LOW/NO Maintenance Hearing Aid



From my clinical experience, I know there's a group of clients who just can't manage the daily hearing aid operations such as cleaning, insertion of aids and changing batteries. For some, losing their aids happens too easily and too frequently. Many of these clients give up on wearing their hearing aids and eventually hearing loss takes away the enjoyment in their lives.

Lyric is not for everyone. However, if after a trial you find it suitable for you, then your hearing will improve and you no longer need to worry

about your hearing aid management. If ongoing earwax is an issue for you, it's reassuring to know that all earwax is removed when we replace your lyric (every 2-3 months). As the lyric is placed deep inside the ear canal, you're back to enjoying all your favourites like listening to music with earphones and talking to loved ones on the phone.

If you would like to know more about Lyric, call 3603 1370 for more information.

Ronnie Lam, Audiologist - Sandgate Hearing

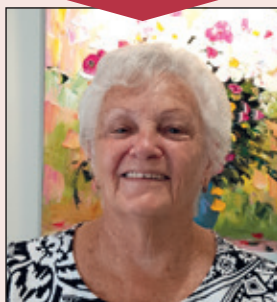
HERE IS WHAT SOME OF OUR HAPPY CUSTOMERS HAVE TO SAY...



Thrilled with the results!

We found Sandgate hearing very friendly and helpful. These are our first hearing aids and we're absolutely thrilled with the results. We'd recommend Sandgate Hearing to anyone with hearing loss.

Graham & Lynette Baker - Scarborough



LYRIC has made life so much easier...

While caring for my husband with Parkinson disease, I had no time to fiddle with external hearing aids. After reading about the Lyric, I walked out of the clinic being able to hear clearly. I'm so grateful that my doctor suggested Sandgate Hearing. Ronnie Lam is very caring and there's no pressure or time limit on appointments. He makes sure you're absolutely satisfied. Lyric may not be for everyone, but if it's for you, you won't be disappointed. It's changed my life!

Jean Conneman - Newport Waterways



I'm so glad I have found Ronnie Lam, my audiologist!

He's been the complete answer to my hearing problems. I've had hearing problems most of my life which has often left me socially disadvantaged. For many years, my wife has been frustrated with my lack of hearing, but now this is changing. Also for the first time I can clearly hear what my grandchildren are telling me. I'd highly recommend Ronnie for his thoroughness and professionalism.

Stephen Munns, McDowall

- The Commonwealth Hearing Service Program
- Paediatric hearing assessment
- Workcover, NDIS hearing assessment

- Central Auditory Processing Test
- Micro-suction earwax removal
- Tinnitus consultation

- Custom musician earplug
- Custom industrial noise plug
- Custom swim, surfer & snore earplug



THE SUV YOU'VE NEVER SEEN BEFORE

TEST DRIVE TODAY

FROM
\$30,990-\$34,490*
DRIVE AWAY



ALL NEW

ALL NEW
MG HS
AUTO SUV



REDCLIFFE MG

Redcliffe MG, 218 Anzac Avenue Redcliffe | 07 3897 4500
www.redcliffemg.com.au

!\$30,990 is the driveway price for the 2020 HS Vibe Model (excluding metallic paint). Vehicle shown is the 2020 HS Excite Model with Metallic Paint with driveway price \$34,490 (which includes metallic paint).