

Redcliffe

FREE APRIL 2016

GUIDE

Peninsula
set to sparkle
at Redcliffe
Gem Show

Redcliffe
Rises for
ANZAC Day

Mutiny

On The Gayundah
World Premier



Photo By Ben McShea



kindred

your only partner in real estate



kindred.com.au

belief in making
a **real** difference



kindred

Contents

Redcliffe

GUIDE

events

- 05 MUTINY ON THE PENINSULA**
History of the
Gayundah on film
- 08 MORETON BAY CELEBRATES NATIONAL YOUTH WEEK**
Skate, scooter and
paddle to the future
- 10 DOWN-2-EARTH IN MORETON BAY**
Ceramic Art Event
- 12 REDCLIFFE RISES FOR ANZAC DAY**
ANZAC
commemorative
events
- 14 PENINSULA SET TO SPARKLE**
Redcliffe Gem Show



Redcliffe Rises for ANZAC Day

Commemorations
Schedule **page 13**

dining guide

- 16 DINING FEATURE STORY**
Old Corner Store
Crema of the Crop
- 18 DINING GUIDE**
A local guide to cafes
& restaurants

arts

- 28 FEDERAL GRANT KEEPS ORCHESTRA IN TUNE**
- 30 A VOICE FOR THE ARTS**
One Creative Voice
Forum

community

- 38 GREEN ARMY GUARDS INLET**
Conservation work
at Hays Inlet
- 40 FACE OF RELAY FOR LIFE**
Event supporting
cancer research

REDCLIFFE GEM SHOW

RPLC Raffle
1st prize



ON THE COVER:
'Mutiny on the
Gayundah' Movie
World Premier

General Contact

0450 078 200
info@redcliffe.net.au

Advertise

Sales Contact:
Dominic Alberth
0450 078 200
info@redcliffe.net.au

Publisher: Dominic Alberth

Editor: Elise Alberth

Stories: Melissa Bailey, Emma Harley,
Susie Laery, Christine Chamberlain

Cover Photo: Ben McShea

Graphic Designer: Crystal Gentry



Photo by Ben McShea

Story of Intrigue, Drama,
Love and Treachery

Mutiny on the peninsula

By Christine Chamberlain

The intriguing story behind the Peninsula's HMQS Gayundah wreck will be retold this month at the Redcliffe Cultural Centre.

The movie, *Mutiny on the Gayundah*, is the first in a series called Queensland's History Mysteries and will have its world premiere at Redcliffe on Monday, April 4.

Producer and director Richard Lancaster says the 75-minute feature length movie recreates the 'mutiny' event that occurred on the HMQS Gayundah more than 130 years ago.

The HMQS *Gayundah* was a flat-iron gunboat operated by the newly established Queensland Maritime Defence Force from 1884.

"I found that the story of the Gayundah was little known and so fascinating," Richard says.

"It never fired a shot in anger but has a fantastic story attached."

Richard says although the movie is based on true events, it is not a documentary and has all the elements of a good story; intrigue, drama, love and treachery.

"It is a comedy. It's not meant to be taken seriously. The facts are correct but we have made the characters larger than life. They

behave very extravagantly," he says.

Richard says he thoroughly enjoyed researching and retelling the HMQS Gayundah's story.

"I love history but it can be a bit boring. I wanted it be entertaining and comedic," he says.

"It has been a great journey. We took a year to make it, and we had very little funding."

The movie is produced by Redcliffe-based High Time TV under the direction of Lancaster McShea Productions.

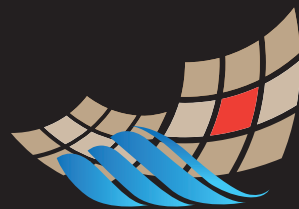
The local cast includes Toby Chittenden, Lee Heather, Ursula Clark, Catherine Cox, Alex Enborisoff and Barry Tuton. Costumes have been supplied by Have a Fun Time Fancy Dress and Party Supplies.

The wreck of HMQS Gayundah can be viewed on the Woody Point foreshore.

Richard is currently in negotiations to have the movie aired on television. The second in the Queensland History Mysteries series, called *Exodus the Movie*, is due to start filming next month.

Mutiny on the Gayundah will premiere at 2pm at Redcliffe Cultural Centre, Downs Street. Tickets are \$8. To book, phone 3283 0407 or visit the cultural centre ticket office.

Cultural Centre What's On



REDCLIFFE
Cultural Centre

Friday 1 April

Flamenco Fire

7.30pm - Adults \$45, Concession \$40

Dazzling Footwork....Compelling Rhythms....Stirring Songs.....Flamenco Fire evokes exotic roots of the sensual and mesmerising art form that is Flamenco.

Tuesday 5 April

Youth - Movie

10am - Tickets \$8

2015 Italian comedy-drama film written, directed by Paolo Sorrentino as his second English language film. Stars Michael Caine, Harvey Keitel as best friends who reflect while vacationing in Swiss Alps.

Wednesday 6 April

Spectre - Movie

7.30pm - Tickets \$8

Cryptic message from the past sends James Bond on a rogue mission to Mexico City and Rome, where he meets Lucia Sciarra (Monica Bellucci), the beautiful and forbidden widow of an infamous criminal.

Mid Morning Showcase -

An Autumn Affair

11am - Tickets \$8.50

With a little bit of this (brass) and a little bit of that (vocal, opera, piano duets), Sheree, David and Joan welcome you to a morning of artistic beauty.

Thursday 7 April

The Good Dinosaur - Movie

10am - Tickets \$8

When a rainstorm washes poor Arlo (Raymond Ochoa) downriver, he ends up bruised, battered and miles away from home.

Alive in Colour - Art Exhibition

7 April to 2 May - FREE, Stage Door Gallery

"The purpose of 'Alive in colour' has been to challenge myself; my fears, inadequacies and creativity" Sarah Tate.

Tuesday 12 April - Wednesday 13 April

Creed - Movie

10am Tues 12 April & 7:30pm Wed 13 April, \$8

Adonis Johnson's (Michael B. Jordan) trains with Rocky Balboa (Sylvester Stallone).

Thursday 14 April

Charmaine Wilson - The Spirit Whisperer

7.30pm - Tickets \$48

Renowned spirit medium, Charmaine Wilson brings messages of love and healing from lost loved ones.

Titanic - Movie

10am - Tickets \$8

James Cameron's epic, action-packed romance set against the ill-fated voyage of the R.M.S. Titanic.

Friday 15 April

The Best Of Bubl  Tribute Show

7.30pm - Tickets \$35 (18+ event)

With 8 piece Big Band, The Swinging Residuals & front man Rhydan Lewis.

Saturday 16 April

The Supreme Dreams

8pm - Adults \$35, Concession/Groups(10+) \$30

After a sell out show in 2015, The Supreme Dreams are bringing back the hits of the 60s, 70s and Disco.

Friday 22 April - Sunday 1 May

Prima's The Little Mermaid

Various times - Adults \$40, Concession/

Groups(10+) \$35, Child \$30

Hans Christian Anderson's hauntingly beautiful story.

Don't miss out on these spectacular tribute shows!

THE BEST OF **BUBLÉ** TOUR

Featuring **Rhydian Lewis** on Vocals and
The Swinging Residuals 8 Piece Big Band

7.30pm Fri 15 April

Tickets \$35 inc glass of bubbly on arrival

Red carpet event • Cocktail dress • 18+ Event



THE **BEATLEGS** THE ULTIMATE BEATLES TRIBUTE

7.30pm Fri 6 May

All Tickets \$25

**Spoil your mum this
Mother's Day and take her out to the
Ultimate Beatles Tribute Show!**



**TRIBUTE
BANDS**
Australia
OFFICIAL NETWORK



Buy tickets now!

(07) 3283 0407 • Downs Street, Redcliffe
www.redcliffeculturalcentre.com.au

Moreton Bay
Regional Council



REDCLIFFE
Cultural Centre

Skate, Scoot and Paddle to the Future

Moreton Bay celebrates National Youth Week

Young people across the Moreton Bay Region can skate, scoot, paddle, design and dance their way through National Youth Week celebrations from Friday April 8 – 17.



"Two-thousand and sixteen sees such a diverse program of events and exciting opportunities for our young people to take part in their favourite activities and even try new ones with friends, showcase their talents and express their ideas," the Mayor said.

“ This year's theme is Be the Future – and that is ultimately what our young people of today will be tomorrow.

"If you're aged between 12 and 25, I'm encouraging you to round up your mates and get involved in what's on offer throughout our region this National Youth Week."

Major activities occurring throughout the region during National Youth Week 2016 will include:

Competitions for skaters and scooter enthusiasts across the region, with the Redcliffe SURGE competition and Moreton Skateboard

Titles in Morayfield on April 9 and both the 2016 AC Masters on at Albany Creek and Bribie Island Titles on April 16.

For those who love the water, there's a chance to give stand-up paddle boarding, windsurfing and kitesurfing a try at Bells Beach.

Meanwhile, artistic ideas will be flowing in Caboolture with a week-long street art project workshop, creating a powerful street art piece at Caboolture Street University from April 8 - 17.

There'll also be the chance to pass a football in a round-robin, all female rugby competition on April 17.

All activities are drug and alcohol free and open to ages 12 – 25 years.

**For more events and full details
including times and locations visit
www.moretonbay.qld.gov.au/youthweek**

Curtains • Blinds • Shutters • Bedding • Cushions • Upholstery • Custom Furniture



THIMBLE
AND CO.

Quality Custom Made
Window and
Soft Furnishings

Shop 4D, Fourth Ave Sandgate Ph (07) 38694349

Lifestyle Emporium • Home Décor • Jewellery • Gifts • Gourmet Food



Living
ON FOURTH
— AVENUE —

4A Fourth Avenue SANDGATE
Ph 3269 6374



Down-2-Earth in Moreton Bay

By Melissa Bailey

This year the Moreton Bay Premier Ceramic Art Event will feature wheelwork, sculpture, thrown pots and hands-on form and texture creations.

Down-2-Earth will feature four eminent ceramic artists. Shannon Garson from Maleny decorates porcelain vessels with intricate designs, and Claire Locker from New South Wales' Warners Bay assembles and decorates soft porcelain slabs. Ian Reid from Flaxton assembles complex forms and works the wheel, while Yvonne Bouwman from Brisbane conducts hands-on workshops in form and texture.

Bouwman will demonstrate her easy hand building techniques in form and texture, focussing on the influence of natural forms. Numbers will be limited to six participants per each half day demonstration and workshop with Bouwman so get in quick to secure your spot!

There will be a number of volunteers from the North Pine Country Park Potters, Redcliffe Pottery Group and Brisbane Island Pottery Group who will demonstrate their various ceramic building skills to attendees, including wheel throwing, anatomical sculpting, sculpture,



extruder and wheel, teapot making, chook making, and decorative slab building.

Looking to share knowledge and resources while fostering the promotion of ceramic arts, the Ceramic Arts Moreton Bay is available to anyone with a passion for ceramics.

“ We are looking forward to the event and hope it provides attendees with new skills and inspiration for their ceramic work,”

says Christine Hammond of the Redcliffe Pottery Group, “This year we are holding it in a larger space and offering affordable access to professionals in the ceramic arts to provide attendees with skills from watching them at work with their pieces.”

Attendees will enjoy a catered morning tea, lunch and afternoon tea on each of the creative days, and may choose to participate in one or both days. A unique competition is available to attendees who wish to participate. Show off your ceramic creation, and go in the running to win a mystery prize! Competition categories include wheel thrown functional ware, hand built sculpture and epic fails from the kiln – so everyone can put a piece in!

The convention weekend begins with a meet and greet held at the North Lakes Community Hall on Friday 15 April, where drinks and light refreshments will be served. The event will continue on 16 and 17 April at the Hall at 10 The Corso, North Lakes.

**North Lakes Community Hall
April 16-17 - 9am - 4pm**

**For bookings or more information, visit
www.ceramicartsmoretonbay.org.au
or call 0411 339 061.**



**Ceramic Arts
Moreton Bay**

Down-2-Earth

April 16 & 17

Moreton Bay's Premiere Ceramic Art Event

A weekend of learning for all levels of ceramic artists featuring demonstrations by:

Shannon Garson; Claire Locker; Ian Reid; and Yvonne Bouwmann

VENUE: North Lakes Community Centre,
10 The Corso, North Lakes 4509

DATE: Sat. 16th & Sun. 17th April 2016

TIME: 9am to 4pm

COST: 2 days - \$95 / 1 day \$60
(Discount applies to CAMB members)

REGISTRATION BY 11 MARCH 2016.

REGISTRATION FORM AND FURTHER INFO
INCLUDING CAMB MEMBERSHIP AVAILABLE
AT CAMB WEBSITE:

www.ceramicartsmoretonbay.org.au
info@ceramicartsmoretonbay.org.au



The aim of Ceramic Arts Moreton Bay (CAMB) is to share knowledge and resources and to foster the promotion of ceramic arts

**Fashion Parade at
Earthy Gifts
by the sea**

79 Landsborough Ave
Scarborough

**30th April 2016
11am**

*Gold coin donation
Lucky door prize*

*Join us for a wine and
cheese and lots
of laughs*

EARTHY GIFTS



by the sea
0414 288 187

*Pam's
Affordable
Gifts*

**DIECAST CARS • CLOTHES
JEWELLERY • JEWELLERY BOXES
INCENSE • MOSAIC MIRRORS
NIGHT LIGHTS & lots more...**

Something for everyone!

140 SUTTON ST REDCLIFFE

MONDAY-FRIDAY 10AM-5PM
SATURDAY-SUNDAY 9.30AM-4PM

0418 797 241



Yvette D'Ath MP
State Member for Redcliffe



Visit: Level 1, Bluewater Square Shopping Centre
Cnr ANZAC Ave and Sutton St, Redcliffe
Phone: 3448 7100

Post: PO Box 936 Redcliffe QLD 4020
Email: Redcliffe@parliament.qld.gov.au
Website: yvettedathmp.com

Lest We Forget

Redcliffe Rises for Anzac Day

Susie Laery

The Redcliffe community will once again stand tall as they commemorate Anzac Day on April 25.

The Redcliffe RSL's Anzac Day commemorations are expected to draw crowds swelling well into the thousands. Last year's centenary commemorations saw a crowd of 30,000 converge onto the foreshore at Redcliffe.

Robert Kingston, a representative of Redcliffe RSL's ANZAC day organising committee says, "Redcliffe is known to host one of the biggest ANZAC commemorative events in South-East Queensland and is growing with each year."

Redcliffe provides a unique location to honour and remember those fallen in battle and those who served and are serving in the military. An emotional day for many, the beach setting and sunrise provide a serene environment to commemorate soldiers past and present.

The large crowds are partly owed to the community of Redcliffe which is comprised of several ex service groups, many Vietnam

veterans and a large contingent of English immigrants who have been touched one way or another by war in their lifetime.

Visitors also come from far and wide from Caboolture, Bribie, Brisbane City and even from south of Brisbane.

The focus of this year will be based on the theme that 2016 marks the centenary of a number of important battles that took place across Europe during the First World War.

Whilst still remembering those who fought in military action during the First World War, Anzac Day has become a day to commemorate all Australians who have sacrificed in military commitments to retain and protect the Australian way of life.

It is a day where Australians and New Zealanders can stand shoulder to shoulder as allies and as neighbours that have shared in the same sacrifices and losses in war.

This is the day of the ANZAC.



Photo by Michael Glover



ANZAC - the name given to the Australian and New Zealand Army Corps soldiers who landed on the Gallipoli Peninsula in Turkey early on the morning of 25 April 1915 during the First World War (1914-1918).

Commemorations Schedule

Poppy Service

Redcliffe Cemetery

Sunday 17th April from 10:00am

The Redcliffe RSL Poppy Service is unlike any other ANZAC tradition. It is one unique to the Peninsula, and crowd sizes have been growing each year.

The Poppy service was designed as a tribute to the lives of the fallen Diggers, and is held on the Sunday before Anzac day each year. For the past twenty years, the legacy Laurel Club ladies have been hand making crepe paper poppies, which are placed on the graves of our beloved ex-service men and women.

Dawn Service & March - April 25th

Redcliffe's RSL's Dawn Service attracts a huge crowd each year. With its waterfront setting, it makes for a spectacular sight as the sun rises over Moreton Island.

MARCH: Fall-in at 5:00am, March-off at 5:15am (at the intersection of Redcliffe Pde and Baker St)

Please note: This year the march will be separated into three groups.

Veterans, followed by Veterans with family*

Cadets

Other marchers, including those marching in memory of a loved one.

**Veterans wishing to march with a child/grandchild or family member will be asked to march at the rear of Group 1.*

SERVICE: 5:30 at Anzac Place

Gunfire Breakfast

A traditional Gunfire Breakfast served in the Gallipoli Grill from 6:00am-8:00am.

Breakfast free for current ex-servicemen and women. Gold coin donation for General Public (proceeds go to Legacy)

General Public are asked to remain outside the Club to allow veterans and their families in first.

Redcliffe RSL closed from 8:00am

Woody Point Service

WHERE: Woody Point Community Centre

WHEN: Service commencing at 8:30am

Main Service & March

Redcliffe RSL's Main Service is one of the largest in South-East Queensland, with crowds growing each year.

MARCH: March-off at 9:30am

(Commencing from the roundabout at Redcliffe Pde and Anzac Ave)

SERVICE: 10:30am at Anzac Place

RSL reopens after Main service

Evening Dress & Footwear regulations apply within the club (and the point) after the main service. This means no thongs or singlets.



Photo by Natalie Conley



Trading hall 2012 Gem Show

RPLC Raffle
1st prize

Peninsula set to sparkle

By Christine Chamberlain

Lovers of sapphires and all that shines should not miss the Redcliffe Gem Show this month.

The Redcliffe Peninsula Lapidary Club is hosting its annual gem festival, now in its 44th year, at Kippa-Ring on April 30 and May 1.

Club spokesperson Angenita Nolten says a highlight of the show is Coolamon Sapphires with their sparkling displays of Australian and overseas sapphires.

Other attractions include opal dealers, exceptional jewellery artists, gemstones, mineral specimens, fossils, lapidary equipment and much more.

"My personal favourites are generally the rock and slab dealers, as I am always looking for new and interesting material to cut," Angenita says.

Angenita says the Redcliffe gem show is one of the largest in the region, attracting many high-end dealers only seen at state and national festivals. Last year's show attracted more than 2500 visitors.

Young prospectors will be kept busy in the

fossicking area where they can sieve for shiny gems. There will also be thunder eggs for sale, which can be cut open on the spot to reveal their inner beauty.

“Last year we had a gorgeous double geode with amethyst and citrine,” Angenita says.

Angenita originally joined the lapidary club to expand her interest in fossicking, but she soon fell in love with cutting cabochons.

"I never got to go fossicking because all my free time is spent at the club," she says.

The club welcomes new members and this year is expanding its premises (at the Wallum Centre, Botanic Gardens, Redcliffe) and upgrading lots of equipment.

"We'll have more and better facilities for our members to express their creativity and an upgrade that will carry us forward for the next decades," Angenita says.

The gem show will be held on Saturday, April 30 and Sunday, May 1 between 9am-5pm at Southern Cross Catholic College, Nottingham Street, Kippa-Ring.

Entry is \$5 for adults and free for children (up to 16 years). Phone 3283 4834 or visit www.lapidaryredcliffe.com.au for more information.



Nashville State School

Brighton

...where children come first.

You are invited to our...

Under 8's Day

Friday 27 May 9am - 10.30am

Prep Open Morning

Saturday 7 May 10.00am - 11.30am

Prep Information Evening

Thursday 18 August 6.00pm - 7.30pm

Enrol now for 2017



3869 7333

Douglas Street
BRIGHTON 4017

www.nashvilless.eq.edu.au



Gem Show

Sat 30 April/Sun 1 May

Lapidary supplies dealers

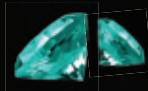
Jewelry supplies dealers

Jewelry artists
& Artisan goods

Kids fossicking area

Thunder egg sales
& cutting

5 Raffle Draws with
Over \$5000 Total Prizes



from 9am to 4pm

Held at:

**SOUTHERN CROSS
CATHOLIC COLLEGE**

Nottingham St Kippa-Ring

BBQ Snack food
German Sausage stall
Soft drinks
Coffee Van
Sandwich counter

Entry Fee
Adult \$5
up to 16 yo
Free

www.lapidaryredcliffe.com.au

Old Corner Shop Crema of the Crop

By Emma Harley

Nestled snugly on the corner of Margate's Victoria Avenue and Dunbar Street, The Old Corner Shop has become a favourite with Peninsula locals.

Voted Best Coffee in the 2015 Redcliffe Guide Dining Awards, the café has made a name for itself on the bean scene.

Annette Croft has owned the café since July 2014, and as it approaches its second birthday, The Old Corner Shop's brews are more popular than ever.

"The café was previously known as Espresso Boutique, and I had been a devoted customer since it first opened in 2011," Annette says.

"After striking up a conversation with the then owner, I told her about my plans to one day own a coffee shop also, and from there the rest is history.

"The building started its life as a corner shop, and it was also a hangout for the local kids.

"I wanted to restore its role in the local community as a hangout for everyone to enjoy, so the name The Old Corner Shop seemed fitting for taking it back to its origins."

With a background in public relations, media, communication, and event management, Annette had no prior business experience.

"I know good coffee from bad coffee and also what great customer service means to building a successful small business," she says.

Entering her second year of café ownership, Annette says the key to success is a great cup of coffee along with good old-fashioned customer service.

"We know many if not most of our customers by name, and for our regular customers we know their coffee as well," she says.



“Our customers voted us the Best Coffee on the Peninsula 2015, enough said.”

Photo by Ben McShea

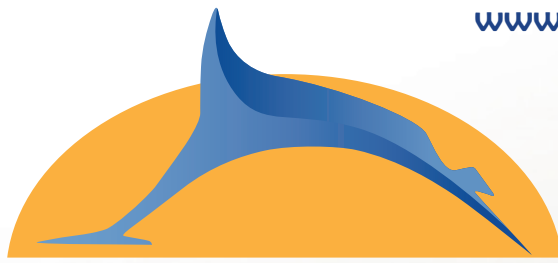
"That type of customer service is pretty unique and all credit to my staff Tammy, Sara, Carlee, Kelly, Aran, Abbey and Jess – you guys rock!"

Annette says the local community has been fantastic in supporting the business.

"When something good comes along, the community really gets behind and supports it," she says.

Visit the Facebook page for more information on how to sample Annette's favourite combination, a schibello latte with a jam drop, or one of their popular bagels.

The Old Corner Shop, Cnr Victoria Ave & Dunbar Street, Margate



FinFresh

Scarborough's Freshest Seafood

- Beachfront location with water views
- Local Fresh Seafood
- Daily Breakfast, Lunch and Dinner
- Catering for all your functions
- Dine in and takeaway
- Gluten Free options available
- Fully Licensed

OPENING HOURS

Mon/Wed/Thu – 9am to 8pm

Tue – Closed

Fri – 9am to 9pm

Sat – 8am to 9pm

Sun – 8am to 8pm



ph. (07) 3880 0945

109 Landsborough Ave, Scarborough QLD 4020

REDCLIFFE

Dining GUIDE



Name: Belvedere Hotel

Address: Corner of Oxley Avenue and Woodcliffe Crescent

Cuisine: Breakfast, Steak & Seafood & Café

Feature: The Belvedere Hotel is a relaxed, friendly, and the Peninsula's oldest hotel. We boast the only sunset seen directly over the ocean on the Eastern Seaboard of Australia, right here at Woody Point.

Contact: 3284 2245



Name: Bikini Beach Cafe

Address: Shop 2 / 77 Redcliffe Pde, Redcliffe

Cuisine: Homestyle & modern Australian

Feature: We offer a variety of freshly prepared dishes for both breakfast & lunch in a warm, friendly, relaxed atmosphere.

All with breathtaking views across Moreton Bay.

Contact: 3883 1515



Name: Chop Chop Sushi

Address: 83 Redcliffe Pde, Redcliffe (next to Rustic Olive)

Cuisine: Japanese Restaurant & Sushi Bar

Feature: Exciting new Japanese restaurant on the peninsular waterfront offering fresh Japanese seafood, variety of sushi & traditional Japanese hot dishes. Come, experience Japan right here in Redcliffe.

Contact: 3283 1475



**OPEN
NOW!!**

Konnichiwa!!
From
chop chop sushi

chop chop!
SUSHI

Exciting
new Japanese
Restaurant
& Sushi bar!

**NEW
SUMMER
MENU!**



Monday
Night Madness
\$2.80

everything on the train
Dinner service only from 5PM



**Tuesday
& Thursday**
Japanese Pizza day
for only **\$11.90**

Open 7 days 10:30AM-8:30PM | 83 Redcliffe Parade (next to Rustic Olive)

07 3283 1475

REDCLIFFE *Di*



Name: Cactus Jack's

Address: 165 Redcliffe Pde, Redcliffe

Cuisine: Tex Mex

Feature: Great Steaks, Sizzling Fajitas and authentic Mexican served with a full cocktail list and up to 16 Beers on tap.

Open Mon-Thurs 5pm to Late,
Fri-Sat 11:30am to Late and now
open for Breakfast on Sunday from
8:30am

Contact: 3284 7990



Name: Cocomango

Address: 142 Sutton Street, Redcliffe

Cuisine: Philippine

Feature: Serving up authentic filipino cuisine influenced by the davawenyo style of cooking.
Open Tue to Sun Lunch 11:30 to 2:00pm Dinner
5:30 to 9:00pm and to 10:00pm on Fri and Sat.

Contact: 3889 4282



Name: Finfresh Seafood Cafe

Address: 109 Landsborough Ave, Scarborough

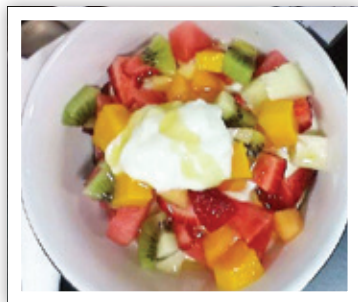
Cuisine: Breakfast, Seafood, Fish n Chips, Cafe

Feature: Licensed with beautiful alfresco dining. Come and enjoy the freshest and tastiest fish n chips and breakfast by the water. Open 7.30am - 9pm except Tuesday(closed).

Contact: 3880 0945



ning GUIDE



Name: Marconi Coffee

Address: 295 Oxley Ave, Margate

Cuisine: Cafe

Feature: Friendly cozy feel with great service, excellent locally grown organic coffee and home made treats! Catering Available.

Contact: 3283 3439



Name: Mon Komo Hotel

Address: 99 Marine Pde, Redcliffe

Cuisine: Steak & Seafood

Feature: Overlooking sparkling Moreton Bay, the hotel delivers fresh seafood, great steaks and other Pacific inspired dishes in a resort style atmosphere.

Contact: 3284 6520



Name: Moreton Bay Boat Club

Address: Bird O'Passage Pde, Scarborough

Cuisine: Steak and Seafood

Feature: Dine overlooking 118 berth Marina and the Glass House Mountains. MBBC is a fully licensed Restaurant offering lunch and dinner 7 days a week.

Café open Tues - Sunday from 8.30am (Sunday breakfast from 7.30am).

Contact: 3203 5188



REDCLIFFE *Dining*



Name: Over There Cafe

Address: Shop 7 Dolphins Central,
Ashmole Rd, Kippa Ring

Feature: Open 8 - 4 every day for breakfast and lunch. Relaxed atmosphere to enjoy great coffee, selection of teas and cakes with a fantastic range of gourmet meals to choose from including gluten free and vegetarian options.

Contact: 3203 6510



over there cafe
see you there



Name: Reef Point Cafe

Address: 75 Redcliffe Pde, Redcliffe

Cuisine: Modern Australian

Feature: Modern Australian Food with the best views. Open for breakfast & lunch 7am-4pm. Functions & specialty. Day or night.

Contact: 3880 0250
mandy@reefpointcafe.com.au



Name: Sea Salt and Vine Cafe

Address: Reef Point Esp, Scarborough (situated behind caravan park)

Cuisine: Modern Australian

Feature: Looking for a tranquil place to enjoy a quality breakfast, lunch or relaxing coffee – overlooking the water with Glass House Mountains views we are open 7am til 4pm everyday.

Contact: 3880 4456



ning GUIDE



Name: Sweet Swirls

Address: 566 Oxley Avenue, Scarborough

Cuisine: Coffee, cakes and more

Feature: Quaint & friendly atmosphere. Bookings accepted for large groups. Great coffee and homemade treats! Hey You app for quick coffee pickup.

Contact: 3880 2140



Name: The Italian Emporium

Address: Shop 1/23 Redcliffe Pde Redcliffe

Cuisine: Authentic Italian cuisine.

Feature: Authentic Italian Dishes, sweets, biscuits, gelato and coffee. Browse our cafe for Home & Gift decor and Pantry Fillers. OPEN Tues-Sun Breakfast, Lunch, Dinner. (Dinner on Saturday nights).

Contact: 3283 8985



**THE ITALIAN
EMPORIUM**



Name: The Old Corner Shop

Address: Cnr Victoria Ave & Dunbar St, Margate

Cuisine: Espresso Bar

Feature: Winner Best Coffee on Peninsula 2015. Family friendly cafe with a kids corner that will keep them busy while you have a cuppa. Choose from a delicious and affordable selection of toasted bagels and other treats.

Contact: 0451 017 726



REDCLIFFE

Dining GUIDE



Name: The Point - Café | Bar | Restaurant

Address: Irene St, Redcliffe (Ground Floor, Redcliffe RSL)

Cuisine: Modern Australian / Casual Dining

Feature: Fantastic food served in a warm, friendly atmosphere, featuring award-winning architecture, outdoor dining areas and views out over Moreton Bay.

Contact: 3897 6090

thepoint
CAFÉ | BAR | RESTAURANT



Name: Tuckshop Comfort Food & Coffee

Address: 326 Oxley Ave cnr Bank St, Margate

Cuisine: Coffee house & Comfort food

Feature: An authentic hole in the wall experience, small in size, big in coffee and food excellence. Join us for a Neli coffee brew, daily changing menu featuring old school treats and global street food eats. Open from 5.30 to 1.30.

Contact: 0426 193 472

tuckshop
COMFORT FOOD & COFFEE



Name: Yabbey Road

Address: Shop 12, Comino's Arcade, 133 Redcliffe Parade, Redcliffe

Cuisine: Fish 'n Chips, Burgers

Feature: Good old-fashioned Fish and Chips served right on the waters edge. Unique and succulent burgers like you have never had before.

Contact: 0499 922 239

YABBEY ROAD
Fish n Chips Burgers Take Away

★★★

★
SEAFOOD

★★★

**MONDAY**

A Selection of Seafood

.....

\$15.95

.....



★★★

★
SCHNITZEL

★★★

**TUESDAY**

Schnitzels with Selected Toppings

.....

\$15.95

.....

**WEDNESDAY****STEAK DAY**

★ 300g ★

***Black Angus
rump*****CHIPS & SALAD**

.....

\$15.95

.....



topper

\$3

.....

**Ambassador**
OF REDCLIFFE

41 Redcliffe Parade Redcliffe 4005
ambassadorhotel@wellerhotels.com
 ph 3284 6427

GIG

GUIDE

FRIDAY 1

Brooks & Co
Mon Komo Hotel 4pm

Mouse
Ambassador of Redcliffe 6:30p

Monkey Business
Redcliffe RSL 8pm

Darren J. Ray
Moreton Bay Boat Club 8pm

SATURDAY 2

Inder
Redcliffe RSL 1pm

Stevenson St
Mon Komo Hotel 4pm

Chris Stevenson
Mon Komo Hotel 4pm

Mark Cryle & Richard Evans
Moreton Bay Boat Club 6pm

Steve Sparrow
Ambassador of Redcliffe 6:30p

Kulaz
Redcliffe RSL 8pm

SUNDAY 3

TBA
Moreton Bay Boat Club 12:30p

Fonoti Brothers
Mon Komo Hotel 1pm

Luke Goodwin
Brick Bistro Bar 4pm

Roger Lewis
Redcliffe RSL 8pm

THURSDAY 7

Dave Clayton
Redcliffe RSL 11am

Nyssa Berger
Mon Komo Hotel 6pm

Woody Dean
Redcliffe RSL 6pm

FRIDAY 8

Missy B
Mon Komo Hotel 4pm

Brent Hutchinson
Ambassador of Redcliffe 6:30p

Zoophonic Blonde
Mon Komo Hotel 7:30pm

The Secret Agents
Redcliffe RSL 8pm

Richard Waterson
Moreton Bay Boat Club 8pm

SATURDAY 9

Rush Hour
Mon Komo Hotel 12am

Shayne Crump
Redcliffe RSL 1pm

Alan
Moreton Bay Boat Club 6pm

Andrew Taylor
The Ambassador of Redcliffe 6:30pm

Kevin Clough
Mon Komo Hotel 7:30pm

Forest Crump
Redcliffe RSL 8pm

SUNDAY 10

Paisley Road
Sea Salt & Vine 11am

Glen Court
Moreton Bay Boat Club 12:30pm

Brad Wild duo
Mon Komo Hotel 1pm

Tracy Vaughan
Redcliffe RSL 1pm

Brad Wild Duo
Mon Komo Hotel 1pm

THURSDAY 14

Dave Clayton
Redcliffe RSL 11am

Nyssa Berger
Mon Komo Hotel 6pm

Mr Jon
Redcliffe RSL 6pm

FRIDAY 15

Chris Stevenson
Mon Komo Hotel 4pm

Jessica Sarah
Mon Komo Hotel 4pm

Stevenson St
Mon Komo Hotel 7:30pm

Tommy Memphis
Redcliffe RSL 8pm

High Noon
Moreton Bay Boat Club 8pm

SATURDAY 16

Craig Shaw
Redcliffe RSL 1pm

Venus Envy
Mon Komo Hotel 4pm

Zia
Moreton Bay Boat Club 6pm

Amos Pella
Ambassador of Redcliffe 6:30pm

Killer Queen
Redcliffe RSL 8pm

Matrix
Redcliffe RSL 8pm

SUNDAY 17

Quiet as a mouse
Moreton Bay Boat Club 12:30p

Garry Hudson
Redcliffe RSL 1pm

SUNDAY 17

Nyssa & Brooksey
Mon Komo Hotel 1pm

James Morrison
Brick Bistro Bar 2pm

THURSDAY 21

Dave Clayton
Redcliffe RSL 11am

Marco
Redcliffe RSL 6pm

Nyssa Berger
Mon Komo Hotel 6pm



FRIDAY 22

Macka
Mon Komo Hotel 4pm

Jon Whitten
Ambassador of Redcliffe 6:30pm

Zoophonic Blonde
Mon Komo Hotel 7:30pm

Elephant Rock
Redcliffe RSL 8pm

Michael
Moreton Bay Boat Club 8pm

SATURDAY 23

Simone Cutting
Redcliffe RSL 1pm

Brad Wild
Mon Komo Hotel 4pm

TBA
Moreton Bay Boat Club 6pm

Bernie Maguire
Ambassador of Redcliffe 6:30pm

Spin (Duo)
Redcliffe RSL 8pm

SUNDAY 24

Alan
Moreton Bay Boat Club 12:30pm

SUNDAY 24

Fabian
Redcliffe RSL 1pm

Chris Stevenson & Casey Watt
Mon Komo Hotel 1pm

MONDAY 25

ANZAC DAY
Redcliffe RSL 5am

THURSDAY 28

Dave Clayton
Redcliffe RSL 11am

FRIDAY 29

Paul Kerin
Ambassador of Redcliffe 6:30pm

Hailey Calvert + Just Like That
Mon Komo Hotel 6:30pm

Goran Duo
Moreton Bay Boat Club 8pm

Dudes of Doo Wop
Redcliffe RSL 8pm

SATURDAY 30

Craig Taylor
Redcliffe RSL 1pm



Darrel Beasants
Moreton Bay Boat Club 6pm

Sister C
Ambassador of Redcliffe 6:30pm

Ian Cooper & Band
Redcliffe RSL 8pm

The Mad Mile + Missy B
Mon Komo Hotel 8:30pm



Federal Grant Keeps Orchestra In Tune

French horn, Oboe to join concert

The Moreton Bay Symphony Orchestra will be able to purchase a new French horn and oboe with the help of a \$5,043 Federal Government grant.

Federal Member for Petrie Luke Howarth MP congratulated the group in a recent speech to Parliament.

"You can never get enough of good music; they say music helps relax and motivate. It can lift your spirits and ease sickness," Mr Howarth said.

“ Locally, we are blessed with the great music and talents of the Moreton Bay Symphony Orchestra.”

The group received the grant through the Stronger Communities Program – a funding opportunity that was announced in last year's Federal Budget.

The Program is funding small capital projects

around Australia to improve local community participation and cohesion.

Moreton Bay Symphony Orchestra holds five regular concerts throughout the year, with their next performance to be held on Saturday 11 June, 2pm at Clontarf Beach State High School.



For more information about the Stronger Communities Program, contact Luke Howarth on phone 3284 8008 or email luke.howarth.mp@aph.gov.au.

Redcliffe Curtain World

Shop 1/91 Redcliffe Parade, Redcliffe

Phone 32848999



Images supplied by Warwick Fabrics

- Curtains made to measure from our large range of fabrics
- We make our curtains on our own premises to ensure quality
- Blinds : Roller, Roman, Venetians, Verticals
- Cushions, Bedspreads, Lamp Shades, Bedheads
- Pelmet, Swags & Tails
- We have been operating in Redcliffe for 20 Years
- Come in to see our Experienced and Friendly Staff
- Bring this advertisement in to receive 5% Extra Discount
- Ring to arrange a Free in Home Measure and Quote

www.redcliffecurtainworld.com.au

E: redcurtain1@bigpond.com



A Voice For the Arts

By Christine Chamberlain

Moreton Bay's most creative minds met recently to design the future of arts in the region.

One Creative Voice Forum was hosted by Moreton Bay Arts Council on March 6 at North Lakes Community Centre and brought together the region's arts and cultural community.

Moreton Bay Arts Council president Janice Charlish, who organised the forum, says creatives from every genre came together to find a stronger voice.

“ We have to identify what the community wants the arts and cultural celebrations to look like in the Moreton Bay region and look at ways this vision could be best shared,” Janice says.

Some of the key concerns raised were creatives feeling isolated, the need for more venues, the need for better leadership, and the development of regional arts and culture narrative, Janice says.

“There was also a strong feeling at the forum that the arts community needs to play a greater role in big projects like the proposed university at Petrie,” she says.

Janice added the forum also aimed to share and promote successful arts in the community and to build on these.

Community art projects discussed included Samford Arts Trail Group, Handmade Redcliffe and Handmade Samford, Between the Tides, *The Sense of Wonder* exhibition and more.

The day also included guest speakers from Flying Arts Alliance, Artlink Queensland Arts Council, Moreton Bay Region Industry, and Tourism and Moreton Bay Regional Council.

Janice says 60 people attended the forum, representing more than 4000 creatives in the community. These included studio operators, creative market enterprises, private galleries, arts workers, individual artists, performing arts companies and dance studios.

“It was a very productive day and a small group was formed to take the ideas forward,” Janice says.

“We are in the process of collating the information from the forum and developing the most effective way to take the spirit of the forum forward.”

If you would like to be part of the discussion on the arts and culture in Moreton Bay, email john@artwithpassion.com

A WORD FROM OUR REPRESENTATIVES

James Houghton



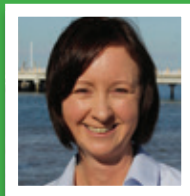
Another fantastic festival held here in Redcliffe is the Festival of Sails celebrated on Good Friday. This year we saw a brightly coloured display of yachts as they passed enroute to Gladstone.

The first Brisbane to

Gladstone Yacht Race was held in 1949, with seven (7) yachts starting the race but only two (2) of them had radios. The other yachts were given homing pigeons and the skipper wrote his position on a piece of paper and attached it to the pigeon. When the pigeon flew home, organisers knew the position of the yachts! The winner of that first race was Doug Perrins on the bow of Hoana, taking 47 hours and 8 minutes. The current race record, set in 2004 by Skandia, is 20 hours and 24 minutes.

Congratulations to Newport Watch who celebrate 30 years since their inception. It is the longest running neighbourhood watch in Queensland. To commemorate this milestone a dinner will be held at Moreton Bay Boat Club on Saturday 16 April. Full details contact Pam Bauze on 3203 8354.

Yvette D'Ath MP



I hope you've had the opportunity to share Easter with loved ones and made the most of our wonderful Peninsula environment.

It is encouraging that our local unemployment rate has fallen substantially over

the past 12 months, from almost 8% to 6.3% in the latest figures. The outlook for young people in our community will be further improved with the recent announcement of Skilling Queenslanders for Work Scheme, Round 2. Over 130 young job seekers in Redcliffe will be supported into training pathways with \$877,800 granted to two community-based not-for-profit organisations. The Redcliffe Area Youth Space and Worklinks are among the successful community organisations that will be working with jobseekers to improve their skills and ability to join the workforce.

I was pleased to host the first Redcliffe Roundtable at our local TAFE Campus. Local business, community and education leaders came together to provide feedback about the needs of the community. The Roundtable will be used to guide development of future course offerings to meet the emerging requirements of our changing local labour market.

Luke Howarth MP



This year is 100 years since Australia entered the First World War in Europe at the Battles of Fromelles and Pozieres, where thousands of Australians made the ultimate sacrifice for our country.

I encourage all locals to attend a commemoration this year to remember and reflect on this sacrifice, and to thank our local service people and ex-service people for their contribution to Australia.

Locals will start seeing more and more activity along the Moreton Bay Rail Link this month as Transport and Main Roads begins testing trains on the line. The first train was placed on the line early last month and had a smooth journey from Kippa-Ring to Kallangur.

In Clontarf, another Green Army project is soon to begin. Led by the Redcliffe Environmental Forum, the team will help restore the Hays Inlet ecosystem through weed control, enhancing migratory bird habitats; and rejuvenating the habitats of threatened species such as Koalas, Eastern Curlews and Australian Painted Snipes.



THE JUNGLE BOOK (CTC)



An all-new live-action epic adventure about Mowgli (newcomer Neel Sethi), a man-cub who's been raised by a family of wolves. But Mowgli finds he is no longer welcome in the jungle when fearsome tiger Shere Khan (voice of Idris Elba), who bears the scars of Man, promises to eliminate what he sees as a threat.

Release Date: 7th April | **Genre:** Action, Adventure, Family, Childrens
Main Cast: Bill Murray, Ben Kingsley, Idris Elba, Lupita Nyong'o.



EDDIE THE EAGLE (PG)



The movie details the inspiring exploits of Michael Edwards, better known as "Eddie the Eagle," the most famous ski jumper in British history. The film's portrayal of Edwards' never-say-die approach to the sport, celebrates the human spirit and resilience in the face of extraordinary odds and challenges.

Release Date: 21st April | **Genre:** Drama
Main Cast: Taron Egerton and Hugh Jackman.



DAD'S ARMY (PG)



May, 1944. As the Allied armies massed in the British Isles prepare to invade Occupied Europe and strike a mighty blow against Hitler's Reich, a heavy responsibility falls on the men of Walmington-on-Sea's Home Guard platoon.

Release Date: 28th April | **Genre:** Comedy
Main Cast: Catherine Zeta-Jones, Bill Nighy, Michael Gambon.



Email info@redcliffe.net.au by 27th April for your chance to win a double pass to any movie.

COMING IN APRIL

Subject to change, check website for more details.

• Jungle Book	7th	• Fan	14h	• Keanu	21st
• Huntsman	7th	• The Boss	14th	• Captain America:	
• Allegiant - Part 1	14th	• Midnight Special	21st	Civil War	28th
• Wide Open Sky	14th	• Mr Right	21st	• Mother's Day	28th
• Criminal	14th	• Eddie the Eagle	21st	• Dad's Army	28th

LASER HAIR REMOVAL

FEMALE BRAZILIAN

Now
\$29
THATS 60% OFF

Dolphins Central Shopping Centre
(Next to the pharmacy)

1300 100 470

redcliffe@antiwrinklebrisbane.com.au

www.antiwrinklebrisbane.com.au



BRISBANE

**Anti Wrinkle
& Skin Studio**

REDCLIFFE



Singer Emma Salmon and her gran, Rhonda May

Photo by Ben McShea

Local voice to grace International Dawn Service

On 24 April 1918, amid WWI, the French town of Villers-Bretonneux saw the world's first battle between two tank forces: three British Mark IVs against three German A7Vs.

The Germans were victorious, but that night and the next day, two First Australian Imperial Force brigades recaptured the town at a cost of 1,200 Australian lives.

One day and 98 years on, in the early morning of Anzac Day 2016, thousands will gather at the Australian Memorial in Villers-Bretonneux.

As voices ring out in song, one of these will belong to Emma Salmon, a North Brisbane local and member of the Voices of Birralee choir.

"We're touring through the Western Front of France, as well as through Paris and Amiens," Emma said.

"We've put so much work into this, so much practice. I don't think I've ever been so excited."

Emma's grandmother, Rhonda May, said singing runs in the family.

“My father was part of the Redcliffe Music and Arts Society many, many years ago, and Emma's mother sang in the school choir at the old Soubirous College and St Bernadette's in Scarborough.”

Rhonda also recalled her family's history during the First and Second World Wars.

"Uncle Frank fought in the First World War, and my father was in the Navy during the Second.

"It's an interesting story – my father was commissioned by the Royal Australian Navy and was set to depart, but then he got pneumonia and couldn't go.

"The ship departed without him and was sunk."

For Australia, the First World War remains the worst conflict in terms of deaths and casualties.

When the Voices of Birralee sing out in France this year, they will be commemorating the 416,809 Australian men who enlisted, of whom more than 60,000 were killed and 156,000 wounded, gassed, or taken prisoner.

The performance will also pay tribute to the Australian families who fought their own battles back home.

Emma will tour with the choir from 17-26 April, joined by around 30 other Brisbane locals including Voices of Birralee founder and distinguished conductor Julie Christiansen OAM.

 **FRIDAY 22 APRIL**

FAULTY TOWERS
the Dining Experience

\$79
/PERSON

**THREE COURSE
DINNER & SHOW**



FRI 27 MAY

**GOLD \$75PP
SILVER \$60PP
BRONZE \$30PP**

**BOOK NOW
3284 6520**

Happy Mothers Day

Sunday 8th May

BUFFET BREAKFAST
\$29.90 PP FROM 6.30AM

BUFFET LUNCH
\$45.00PP FROM 12 NOON

To book call 3284 6520 or email events@monkomohotel.com.au

✿ **MON KOMO HOTEL** ✿ 99 MARINE PARADE REDCLIFFE P 3284 6520
WWW.MONKOMOHOTEL.COM.AU FACEBOOK.COM/MKHOTEL

**GUITAR
SCHOOL**

\$99 Special

- 5 Weeks + Materials
- Beginners Welcome
- Children & Adults

Enrolling Now!
G4 GUITAR METHOD
The Proven Structured Method



Bracken Ridge
Phone: 0402 888 146
E: g4guitarbrackenridge@gmail.com
W: guitarlessonsbrackenridge.com.au
g4guitarmethod.com

IN2U

ADULT CONCEPT STORE

**LOOKING FOR SOMETHING
A LITTLE NAUGHTY?**

333 OXLEY AVENUE, MARGATE
07 3284 4922
WWW.IN2UADULT.COM.AU
MARGATE.SALES@IN2UADULT.COM.AU

More than 100 Years in the Making:

First train tested on Moreton Bay Rail Link

Saturday 5 March 2016.
Remember this date,
because it has just made history.



This is when the first train was hoisted onto the newly laid train tracks of the Moreton Bay Rail Link. Federal Member for Petrie Luke Howarth MP said testing of the new rail line would continue over the next few months.

"This is an exciting step because it means the project is almost complete.

"Locals will start to see more activity on the tracks as Queensland Rail begins testing the electrified lines, signalling systems and other equipment.

"It's great to know the project has also served an environmental purpose, allowing conservationists from the University of Queensland to tag almost 350 koalas, vaccinate them against chlamydia and relocate them to safer bushland nearby."

The \$988 million project has been jointly funded by all three levels of Government, and is expected to be operational by mid-2016.

A rail line to the Redcliffe Peninsula was first proposed in 1895 when the Queensland Government's Minister for Railways, the Hon Robert Philp, was given three proposals to consider. He chose the preferred route through to Petrie.

“ This exciting step because it means the project is almost complete.

Info Sessions

Queensland Rail will hold information sessions in the Moreton Bay region during April for residents with any questions:

9am-11am April 9: Undurba State School Hall, Ogg Rd, Murrumba Downs

9am-11am April 16: St Benedict's College Hall, next to Mango Hill East station

9am-11am April 23: Hercules Road State School Hall, Hercules Rd, Kippa-Ring



CROWN

PROPERTIES

REAL ESTATE

PROPERTY MANAGEMENT SERVICES From 7% (+GST)



Peace of mind so you can enjoy the important stuff

A full property management service with NO hidden costs!!

Phone Caitlin & Jody today to discuss your property management needs.

Phone 3283 3313

Email jody@cpqld.com.au

91 Marine Pde, Redcliffe Q 4020

www.crownpropertiesqld.com.au





Samantha Abbott (REF Secretary) and Chris Joyce (REF)



Robbie Joyce with seedlings



Alex Collins (left). Alex is the new Supervisor for the Green Army projects.

Green army guards inlet

By Christine Chamberlain

A small army is working hard to protect and restore the peninsula's remaining natural beauty.

Thanks to two successful rounds of Green Army grant funding, Redcliffe Environmental Forum (REF) can continue much-needed conservation work at the Hays Inlet area.

REF committee member Chris Joyce says the Hays Inlet Green Army projects aim to restore ecosystems through weed control and replanting, protect migratory bird habitats, and restore habitat for threatened species such as the koala, Eastern Curlew and Grey Headed Flying Fox.

REF was started in 2005 by a group of Redcliffe residents concerned about their disappearing natural environment. Their aim is to protect the remaining natural areas and the region's fauna and flora.

"REF understood that gaining community awareness and inspiring the community to protect the very reasons they had chosen to live in the area was the right approach," Chris says.

The project's Green Army team is made up of nine participants aged between 17 and 24.

"Preference is typically given to participants who have a can-do attitude, are willing to learn and to get their hands dirty," Chris says.

The Green Army program, which usually runs for 20 to 26 weeks, is designed to get young people the skills they need to make them more attractive to potential employers.

"The project participants will work to remove rubbish and weeds from 4ha of the Hays Inlet area and to plant 3000 new plants to create and restore habitat," Chris says.

At the completion of all three Green Army projects, 27 young people will have received training and experience in environmental restoration, about 10,000 trees will have been planted, 30 tonnes of weeds removed and 12ha of the Hays Inlet restored.

Chris encourages all residents to do their bit to help protect natural habitats.

"The natural beauty of the Redcliffe Peninsula is at serious risk of being lost unless we all work together to look after it."

"The simple and easy actions of choosing to recycle household waste, avoiding littering and stopping using natural areas as a place to conduct destructive activities will go a long way to helping out."

Back for 2016

Job Seeker Boot Camp






14 April 2016
2.00pm - 4.00pm

- ✓ Gain career insights from local business leaders.
- ✓ Network with employers in your field.

For more information and to RSVP contact Luke's office:
P. 3284 8008 or **E.** luke.howarth.mp@aph.gov.au



LUKE
HOWARTH MP
Federal Member for **Petrie**

 40 Hornibrook Esplanade, Clontarf QLD 4019
 3284 8008  luke.howarth.mp@aph.gov.au
 lukehowarth.com.au  [lukehowarthmp](https://www.facebook.com/lukehowarthmp)



Face of Relay For Life

Cancer survivor urges us to support cancer research

Redcliffe local Cheryl Barrett is a strong supporter of Cancer Council's Relay For Life – and this year, she's decided to open up about why.

In 2003, at 48 years old, Ms. Barrett was diagnosed with breast cancer. This is something she has mostly kept quiet.

"It's taken me a lot of years to be able to open up freely about my experience", Ms Barrett said.

"After I was diagnosed with breast cancer I had a period of three weeks to churn up everything in my mind and prepare to turn up for a full mastectomy."

Ms. Barrett said she recovered well after the surgery and said the whole experience was an eye-opener.

"I'd never actually sat and listened to someone discussing my mortality rate before – it seemed unreal at the time," she said.

"I feel for those who have been in that situation

– their family and friends – it was terrifying.

"Research is the only thing that is going to kick this beast and this is why I get involved with the Relay For Life. I hope the funds we raise will help others who have been impacted by cancer."

In recognition of her dedication for raising awareness and funds, Ms. Barrett has been named Face of the 2016 Redcliffe Relay For Life, held May 28-29 at the Mary Nairn Fields.

Cancer Council Queensland spokesperson Katie Clift thanked Ms. Barrett for sharing her story and for showing just how important it is that we band together in the fight against cancer and make a difference.

"Each year the Redcliffe community comes together to fight back against cancer and we hope locals will do the same this year," Ms. Clift said.

"Don't miss out – get your friends, family and work colleagues together, and join us to give hope to all Queenslanders affected by cancer.

"Community action saves lives. In 2015, Queensland Relay For Life events raised more than \$3.5 million that will help fund life-saving cancer research, develop vital prevention programs and provide localised patient support services.

"Getting involved might only seem like a small way to make an impact, but your contribution makes a lasting difference to locals touched by the disease."

Redcliffe Relay For Life will see teams keep a baton moving in a relay style walk or run for 18 hours overnight, in support of an estimated 25,000 Queenslanders diagnosed with cancer each year.

To register a team, volunteer or find out more, visit www.relayforlife.org.au or phone the Fundraising Hotline 1300 65 65 85.

Registration is \$30 per person or \$40 on the day.

More information about Cancer Council Queensland is available via 13 11 20 or www.cancerqld.org.au.

The beauty
IS IN THE DETAIL



Esk Buffet



Woodstock Table



Suko Buffet



4Print Buffet



Hesta Table

WE ARE OPEN THROUGHOUT EASTER

Redcliffe Store

177 Redcliffe Parade, Redcliffe QLD

p: (07) 3284 3222 **OPEN 7 DAYS**



Find us on facebook
Vast Interior Redcliffe

www.vastinterior.com.au

VAST
interior
furniture & homewares

Property Market Update

The Brisbane local government area (LGA) has reached a new high of \$632,000, capping off 14 consecutive quarters of growth. This is a record median price for Brisbane, while Redcliffe and surrounding suburbs have continued to also benefit from the steady price increases with a median house price of \$397,500 with 2.7% growth over the last quarter.

The Redcliffe Peninsula although experiencing steady price increases has seen sales volumes ease in some suburbs with up to 30% decrease in sales from the last comparable yearly quarter. We are experiencing low stock numbers as local property owners look to hold on and see if the market changes with the train station opening later in the year.

There is no doubt the new train station will play its part in the property market, however with average days on market down and strong prices, the Autumn period does seem an appealing time for locals to sell if they are considering in 2016.

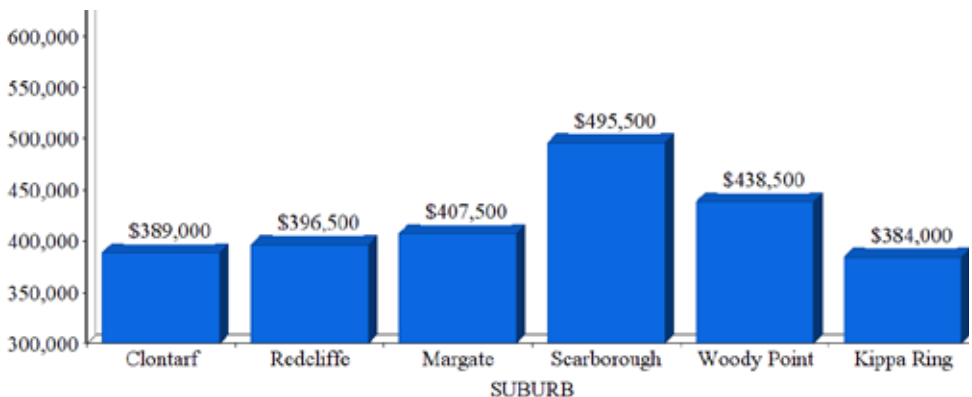
With the new Moreton Bay town plan released in February 2016, many buyers and property

owners have flocked to gain a better understanding how they will be impacted. To summarise it is evident the Moreton Bay Council are planning on much higher density over the next 10 years as the Bayside community becomes the Jewel in South East QLD.

Baby boomers continue to be a force in the market as Brisbane residents choose the hot spots of Woody Point, Margate and Scarborough to make a sea change. Investors alike looking for land banking or development opportunities makes finding the big family blocks more and more difficult.

We might be heading into Winter, but there are no signs of the market cooling down. For guidance on market conditions, the new town planning impact on any property in the Redcliffe area we suggest talking to the REIQ Zone Chair Joshua Kindred at Kindred Property Group.

Quick Stats - Medium House Price By Suburb





328 SCARBOROUGH RD, SCARBOROUGH

**BRAND NEW
APARTMENT ONLY
5 LEFT!!! SECURE
YOUR FUTURE
TODAY**



Exciting brand new luxury apartments in Scarborough, only 500m from the stunning Scarborough Beach.

- Unique in design
- Two bedroom, two bathroom and two secure car spaces
- Generous in size with open plan living and massive balconies
- Low Body Corporate Fees

Price from \$400,000

Frank De Raadt | 0412 885 288
Amanda Fowler | 0419 358 292



109 OXLEY AVENUE, WOODY POINT

 4  2  3

This gorgeous Queenslander features classic world charm mixed with modern lines. Finished beautifully to enhance all its character. So close to the water, enjoy sea breezes from your deck while the kids play outside for hours.

\$649,000

Brendan Philp

0431 103 503 | email: brendan@abodere.com.au



97 ALBERT STREET, MARGATE

 3  1  0

Looking for a big deck but not satisfied with the decks that you have seen? This is sure to impress! Come home to a relaxing environment and enjoy the connection between outdoor and indoor living.

\$439,000

Brendan Philp

0431 103 503 | email: brendan@abodere.com.au



150 ASHMOLE ROAD, NEWPORT

 4  2  2

A canal property that offers entry level buying but is full of features! With scope to add your own touches, the residence offers a lay-out that the whole family will adapt to with ease.

\$849,000 plus

Brendan Philp

0431 103 503 | email: brendan@abodere.com.au



33 VICTORIA AVENUE, WOODY POINT

 4  2  2

A mere 18 months old this impressive Executive Style home has been designed to absorb the coastal lifestyle. Start the day every morning by jumping down to waterfront pathways located just seconds from the home.

\$675,000 plus

Brendan Philp

0431 103 503 | email: brendan@abodere.com.au



Brendan Philp
Principal
0431 103 503



Lyn Batten
Property Manager
0477 117 899



Deb Sheridan
Administration
07 3284 1999



LOCAL Born....

LOCAL Raised....

Your **LOCAL Agent**



Brendan Philp

0431 103 503

"Achieving what others promise"

APRIL 2016 TIDE CHART

Time m
1 0328 2.03
1013 0.87
FR 1602 1.66
● 2203 0.80

2 0446 2.09
1130 0.77
SA 1720 1.77
2322 0.72

3 0554 2.21
1236 0.64
SU 1825 1.93

4 0031 0.60
0652 2.33
MO 1331 0.50
1921 2.10

5 0132 0.48
0744 2.43
TU 1422 0.38
2013 2.26

6 0229 0.37
0833 2.48
WE 1507 0.29
2101 2.40

7 0321 0.30
0919 2.48
TH 1550 0.24
● 2149 2.51

8 0411 0.28
1006 2.43
FR 1632 0.22
2235 2.58

Time m
9 0501 0.30
1051 2.32
SA 1712 0.25
2322 2.59

10 0551 0.38
1137 2.18
SU 1751 0.33

11 0009 2.54
0641 0.49
MO 1226 2.00
1833 0.45

12 0059 2.45
0737 0.62
TU 1319 1.84
1919 0.58

13 0153 2.33
0841 0.72
WE 1424 1.72
2016 0.71

14 0255 2.21
0952 0.76
TH 1543 1.67
● 2129 0.80

15 0406 2.14
1103 0.74
FR 1700 1.72
2250 0.82

16 0515 2.13
1204 0.68
SA 1805 1.84

Time m
17 0002 0.77
0614 2.14
SU 1255 0.61
1857 1.97

18 0059 0.69
0704 2.17
MO 1337 0.55
1940 2.08

19 0148 0.63
0747 2.18
TU 1415 0.50
2019 2.17

20 0230 0.58
0824 2.17
WE 1447 0.47
2053 2.25

21 0309 0.55
0859 2.15
TH 1517 0.45
2126 2.30

22 0345 0.54
0931 2.12
FR 1546 0.43
○ 2159 2.34

23 0420 0.55
1003 2.07
SA 1615 0.44
2231 2.36

24 0454 0.58
1035 2.01
SU 1644 0.46
2304 2.35

Time m
25 0529 0.62
1108 1.94
MO 1715 0.51
2339 2.31

26 0605 0.68
1143 1.86
TU 1748 0.57

27 0014 2.26
0644 0.74
WE 1224 1.78
1825 0.64

28 0056 2.21
0732 0.78
TH 1313 1.72
1911 0.72

29 0147 2.16
0832 0.80
FR 1418 1.69
2012 0.78

30 0251 2.14
0943 0.76
SA 1537 1.72
● 2130 0.79

northside

PRINT & DESIGN

WE PRINT

Business Cards | Flyers | Brochures

Shop online:

www.northsideprint.com.au

or

☎ **0450 078 200**

FREE LOCAL DELIVERY



CROWN

PROPERTIES

REAL ESTATE

We have a view of your future



- Residential purchase & sales with marketing tailored to your property
- Commercial sales & leasing opportunities
- Residential property management & leasing services
- A specialised Developments & Unit division

Phone. 3283 3313

Email. admin@cpqld.com.au

91 Marine Pde, Redcliffe Q 4020

www.crownpropertiesqld.com.au



LOCAL DIRECTORY

ACCOMMODATION

Redcliffe Motor Inn 3283 4600
Oaks Mon Komo 99 Marine Drive Redcliffe 3283 9300
Waltzing Matilda Motel 109 Margate Parade Margate 3283 7177

ACCOUNTING & BOOKKEEPING



**REGISTERED
BAS AGENTS**

PH 0431 698 369

www.xlbooks.com.au




AIR CONDITIONING

SAFE & SURE

ELECTRICIANS • AIR CON • SOLAR

"gentlemen in the trade"

Proudly Servicing Redcliffe

3269 9773

www.safe-sure.com.au

BANKS



**MORTGAGE BROKER - BUYING
REFINANCING - INVESTING?**

We do the legwork and help you choose the right loan from over 30 Banks and guide you through the process. **FREE SERVICE**


Nikki Meldrum ACL 392879

Call **0415 606 164** today

www.homeloanprofessionals.com.au



BOATING SERVICES & SALES



Your One Stop Boating Megastore

2294 Sandgate Rd, Boondall,
QLD, 4034

Tel: 07 3265 8000

Web: nsmarine.com.au

CAFES & RESTAURANTS

1st Stop Cafe 98 Elizabeth Avenue, Clontarf 3284 8770
Anka Kebab 272 Anzac Avenue Kippa-Ring 3883 1970
Bay Boats 439 Scarborough Rd Scarborough 3203 5033
Bayside Kebab 9 Elizabeth Avenue Clontarf 3283 4141
Bella Sicilia Pizza & Pasta 295 Oxley Ave Margate 3283 1755
Big Dad's Pies 295 Oxley Ave, Margate 3283 8684
Bikini Beach Cafe 77 Redcliffe Parade, Redcliffe 3883 1515
Billy's On The Bay 109 Margate Parade Margate 3283 1888
Breakers Snack Bar 2/150 Maine Road Clontarf 3284 0011
Brick Bistro Bar 97 Redcliffe Parade Redcliffe 3284 1117
Danny's 89 Landsborough Avenue Scarborough 3880 1900

CAFES & RESTAURANTS

Delgado's 255a Victoria Avenue Redcliffe 3284 5258
Delightful Donuts 252 Anzac Avenue Kippa-Ring 3283 4603
Desmonds On Anzac Takeaway 29 Anzac Ave Redcliffe 3889 5801
Domino's Pizza Shop 10 Portwood Place Redcliffe 3384 2111
Donut King Kippa-Ring PeninsulaFair Kippa-Ring 3284 5650
Feel Goodz Gourmet 14 Oxley Ave, Woody Point 3284 7150
Fed Up 26 Ashmore Road Redcliffe 3283 7117
Fish'n at Bell's Beach 184 Hornbrook Espl Clontarf 3283 1618
Flip 'N' Fish Cntrf 1/9 Elizabeth Avenue Clontarf 3283 6426
Groovy Groper 114 Hornbrook Esplanade Clontarf 3883 3499
Healthy Noodle Bar 300 Oxley Avenue Margate 3283 5228
Hog's Breath 115 Redcliffe Parade Redcliffe 3284 7244
Honey Pot 29 Redcliffe Parade Redcliffe 3283 1655
Hornbrook Bakery 114 Hornbrook Espl Clontarf 0432 319 999
Indian Brothers Restaurant 40 Hornbrook Espl Clontarf 3284 5599
JD Thai 3a Oxley Avenue Margate 3284 4558
Jetty Café 155 Redcliffe Pde Redcliffe 3284 2986
Kashmir Cafe 59 Redcliffe Pde, Redcliffe 0449 645 281
Kazzy's Larder 1/52 King Street Woody Point 3142 2244
Mamma's Italian Restaurant 265 Oxley Ave Margate 3284 4512
Marcello's Italian Restaurant 116 Sutton St Redcliffe 3284 2312
Marconi Coffee Shop 7/295 Oxley Ave Margate 3283 3439
Masala Point Café Restaurant 14 Oxley Ave Woody Pt 3284 0035
McDonald's Redcliffe 94 Silvyn Street Redcliffe 3883 2644

MERTONS

BAKERY

3203 5511

Purveyors to the Discerning

COFFEE CAKES PASTRIES BREAD

Miccolini's Pizza & Pasta 143 Griffith Rd Scarborough 3880 2755
Morgans Seafood Bird of Passage Pde Scarborough 3203 4592
Outback Jacks Cnr Anzac Ave & Sutton St Redcliffe 3283 8125
Pasta Kitchen 6/14 Oxley Ave, Woody Point 3889 5246
Pasta Riviera 12 Cameron Street Clontarf 3284 2211
Peninsula Fair Carvery 284 Anzac Avenue Kippa-Ring 3284 2956
Peninsula Takeaway Balmoral Street Margate 3283 2651
Perky Panda Cnr Anzac Ave & Sutton St Redcliffe 0421 249 305
Pilpel 26 Baynes Street, Margate 3092 2864
Pizza Hut Clontarf 15/9 Elizabeth Ave Clontarf 1300 749 924
Red Rooster 405 Elizabeth Ave Kippa-Ring 3283 4149
Red Wing Charcoal Chicken 23 Redcliffe Pde Redcliffe 3883 3008
Redcliffe Pizza & Kebab Café 303 Oxley Ave Margate 3889 5550
Reddy Kebabs 133 Redcliffe Parade Redcliffe 3284 6911
Reef Point Café 75 Redcliffe Parade, Redcliffe 3284 6956
Restaurant Caribbean 99 Marine Parade Redcliffe 3284 6520
Sails Restaurant Marine Parade Redcliffe 3284 3320
Samila Thai Restaurant 295 Oxley Avenue Margate 3284 4430
Saucy Mama 115 Sutton Street Redcliffe 3889 5994
Sea Salt & Vine 2 Reef Point Esplanade, Scarborough 3880 4456
Silver Lake Chinese Rest. 63 Landsborough Ave Scborough 3880 1209
Sizzler Redcliffe 76 Anzac Avenue Redcliffe 3283 1977
Something Moore-Ish Café 27 Lilla St Woody Point 3883 4895
Sushi Central 141 Sutton Street Redcliffe 3283 8188
Sutton St Café 137 Sutton Street Redcliffe 3883 2393
T&J's Snack Bar 33 Brewer Street Clontarf 3284 4471
Thai Surprise 95 Prince Edward Parade Scarborough 3880 3477
The Boat Shed 63 Landsborough Avenue Scarborough 3880 0555
The Coffee Club 171 Redcliffe Parade Redcliffe 3283 6147
The Coffee Club - Kippa-Ring 284 Anzac Ave Kippa-Ring 3283 4739
The Golden Ox 330 Oxley Avenue Margate 3283 1833
The Oasis On The Esplanade 163 Redcliffe Pde Redcliffe 3283 1677
The Point Cafe, Redcliffe RSL, Redcliffe 3897 6090
The Rustic Olive 79 Redcliffe Parade Redcliffe 3889 3199
Under The Verandah 155 Oxley Ave Woody Point 0415 728 825
What's In The Pot? 133 Redcliffe Pde Redcliffe 3283 4433
Wok Me Noodle Bar Bluewater Square Redcliffe 3283 5333
Woody's Seafood 42 Oxley Avenue Woody Point 3284 5545
Zarrafra's Coffee 20 Anzac Ave Redcliffe 3283 2711

LOCAL DIRECTORY

CAR BUYERS



AVOID THE TRAPS AND POTHOLE

Car Industry insider helps you to buy your next car better



- Save from \$500 to \$5000
- Save on your Finance options
- Save on Vehicle Protection
- Save on Service Costs

Buying a Car? Buying Finance? WE'LL SAVE YOU

Ph 0418 748 498 or info@carbusiness.com.au
www.carbusiness.com.au

COMMUNITY

Neighbourhood Centre 1 Lamington Drv Redcliffe . . . 3284 3081
 PCYC Klingner Rd Redcliffe . . . 3385 1900
 Quota International Redcliffe Inc Margate . . . 3880 3462
 Redcliffe Area Youth Space Cnr Anzac & Oxley Ave Redcliffe 3283 8769
 Redcliffe Cultural Centre Downs Street Redcliffe . . . 3283 0400
 Redcliffe Surf Life Saving Club PO Box 277 Redcliffe . . 3284 4105

COMPUTER & PHONE REPAIRS

PHONE & COMPUTER REPAIRS REDCLIFFE

IN BLUEWATER SQUARE SHOPPING CENTRE - QUICK IN-STORE & CALL-OUT REPAIRS
 (07) 3733 0960 - www.casphone.com.au

ELECTRICIANS

Elimbah Electrics All Areas 0413 154 367
 Gold Electrical All Areas 3491 3909
 K&G Electrical 3293 2999



Proudly Servicing Redcliffe

3269 9773

www.safe-sure.com.au

FITNESS

Anytime Fitness 9 Elizabeth Avenue Clontarf 3284 0708
 GK Fit Mobile Personal Trainer 0413 856 920
 Healthworks Peninsula 20 Anzac Ave Redcliffe 3284 3155
 Jerome's School of Tai Chi 23 Victoria Ave Woody Point. 3883 2766
 Jetts Fitness Margate 326 Oxley Ave Margate 3283 2715
 Max 24 Hour Fitness 607 Oxley Ave Scarborough . . . 3203 4121
 Peninsula Fitness 34 Baynes St Margate 3283 1377
 Reddy Fit - Clontarf 10 Noel Street Clontarf 0402 635 392
 Snap Fitness 250 Anzac Ave Kippa-Ring 0412 088 010

FUNERAL DIRECTORS

TRADITIONAL FUNERALS 3284 7333
 17 Anzac Avenue Redcliffe

GALLERIES

Redcliffe City Art Gallery 470-476 Oxley Ave Redcliffe . . 3283 0415
 Redcliffe Cultural Centre Downs Street Redcliffe . . . 3283 0400
 Sea Side Artists Gallery 133 Redcliffe Pde Redcliffe . . 3284 3356

HAIR & BEAUTY

Allured Hair Studio 295 Oxley Ave Margate 3889 4212
 Anthony Presotto 13 Balmoral Street Margate 3283 2228
 Arke Hair Artistry 14 Oxley Avenue Woody Point 3889 5005
 Bayside Int Hair & Beauty Bar 2 Anzac Ave Redcliffe. 0423 713 193
 Beautiful You Hair & Beauty 4 Duffield Rd Margate. . . 3284 6463
 Becky B Hairdressing 138 Sutton St Redcliffe 0432 908 541
 Bio Point Hair Shp 1b/ 27 Lilla St Woody Point 3283 1722
 A Beautiful Facial 127 Sutton Street, Redcliffe 0407 673 604
 Body Bliss Health & Beauty Salon 39 Bank St Margate. 3283 3368
 Bronzed Hair 53 Maine Road Clontarf 3496 2584
 Carmens Cuts 257 Oxley Ave Margate 3283 3288
 Cel-Tair Hair 300 Oxley Ave Margate 3883 1580
 CJ Shears Cltrf 10 Lucinda Street Clontarf 3284 4247
 Cutting It Up 110 Ashmole Rd Redcliffe 3880 3881
 Elixir Hair & Beauty 103 Kate Street Woody Point . . . 3283 8380
 FMG Hair 24 Baynes St Margate 3283 5500
 Gossip Hair & Beauty Bar 457 Portwood Pl Redcliffe. . 3284 6408

Hair By OZ 13 Moonga Crt Clontarf Specialising In Colour ,UpStyling and Cutting **32835933**

Hair Revolution 319 Oxley Avenue Margate 3284 7008
 Happy Cuts Hair Salon 141 Redcliffe Parade Redcliffe. 3284 3990
 Identity Hair Design 300 Oxley Avenue Margate 3142 2082
 Jaffa's Styling Studio 83 Griffith Rd Scarborough . . . 3203 7374
 Just Cuts 128 Sutton Road Redcliffe. 3284 5830
 Majestic Hair 265 Oxley Av Margate 3284 7676
 Making Waves on Scarborough 95 Landsborough Ave . 3203 5080
 Midway Hair 538 Oxley Ave Redcliffe 3203 4003
 MKL's Hair 200 Prince Edward Pde Scarborough . . . 3474 5801
 Morag's 77 Dakis Arcade Redcliffe 3284 2644
 My Bomb Shells Shop 3 Jetty Arcade, Redcliffe 0427 278 820
 NVS Hair & Beauty Bluelwater Sq Shopping Redcliffe . 3284 1474
 Piasecki's Hairstudio Dakis Arcade, Sutton Str Redcliffe 3284 2644
 Rebhorne 127 Sutton Street, Redcliffe 3283 7757
 Redcliffe Barber Shop Shp2/ 120 Sutton St Redcliffe . 3284 2288
 Rob's Barber Shop Oxley Avenue Margate 3284 6832
 Rustic Blend Hair 65 Landsborough Ave Scarborough 3203 5441
 Silhouette Hair Design 26 Baynes Street Margate . . . 3883 1414
 Simply Organic Hair 468 Oxley Avenue Ave Redcliffe. 3883 2229
 Simply Strandzz of Redcliffe 93 Redcliffe Pde 3283 1211
 Studio 7 Hair Design 107 Anzac Ave Redcliffe 3284 3558
 The Hair People 57 Ashmole Road Redcliffe 3880 0612
 The Texture Crew 538 Oxley Avenue Redcliffe. . . . 3203 4003
 Touch Of Beauty Hair Fashions 253a Victoria Ave Redcliffe 3284 7585
 Vintage Hair & Beauty 89 Landsborough Ave Scarborough 3880 0222
 Yvette's Unique Mobile Hairdressing All Areas 0430 534 294

HEALTH & WELLBEING

Bay Therapy 315 Oxley Ave Margate 1300 553 663

ESSENTIAL BOWEN 0422 498 074 Shop 6 Jetty Arcade, Redcliffe Parade, Redcliffe

Lifestyle Health & Wellbeing 30 Ashmole Rd Redcliffe . 3885 7115
 LIME Mobile Massage and Aromatherapy. All areas . . 0431 561 290
 Joyful Eating & Weight Loss 326 Oxley Ave, Margate . . 0427 608 843
 Redcliffe's Family Chiropractors 17 Silvyn St Redcliffe. 3284 2065
 Scarborough Chiropractic Ctr 612 Oxley Ave Scarborough 3203 6944
 Spectrum Health Chiro 173 Oxley Ave Woody Point . . 3284 4003
 Third Eye Healing 74 Ernest Street Margate 3883 3882

LOCAL DIRECTORY

HOTELS & BARS

Ambassador Of Redcliffe 41 Redcliffe Pde Redcliffe . . . 3284 6427
Belvedere Hotel Woodcliffe Crescent Woody Pt 3284 2245
Bramble Bay Bowls Club Hornibrook Esplanade Woody Pt 3283 4411
Captain Cook Tavern Peninsula Fair Kippa-Ring. 3284 0322
Mon Komo Hotel 99 Marine Parade Redcliffe 3284 6520
Redcliffe Leagues Club Klingner Rd Redcliffe. 3203 7333
Redcliffe Tavern 34 Anzac Ave Redcliffe 3385 1200

MECHANICS



Phone: (07) 3269 3295
113 Rainbow Street
Sandgate Queensland 4017

e: admin@mccormackstyres.com.au | www.mccormackstyres.com.au

PEST CONTROL



Take Care Of Pests With Express
Call Jay 0481 169 345

SANDGATE PEST CONTROL



the termite specialists



Phone
3269 6198
QBCC 108 7905

www.sandgatepest.com.au

PRINTING SERVICES

Redcliffe
GUIDE
PRINT & DESIGN

**BUSINESS
CARDS
& FLYERS**

**CALL US
TODAY!**

PH: 0450 078 200

E: INFO@REDCLIFFE.NET.AU

REAL ESTATE AGENTS

ABODE PROPERTIES. 3284 1999
42 Oxley Avenue, Woody Point

LIST YOUR BUSINESS HERE

From only \$20+GST per issue.
Call Dominic on 0450 078 200 or
Email info@redcliffe.net.au

REAL ESTATE AGENTS

CROWN PROPERTIES 3283 3313
91. Marine Parade

WATERFRONT PROPERTIES 3283 4377
3/75 Redcliffe Parade, Redcliffe

RETAIL



333 OXLEY AVENUE, MARGATE
07 3284 4922

WWW.IN2UADULT.COM.AU

MARGATE.SALES@IN2UADULT.COM.AU

Pam's
Affordable Gifts



140 Sutton Street, Redcliffe

0418 797 241

The Lucky Charm Blue Water Square, Redcliffe 3883 1087
Vast Interior 177 Redcliffe Pde, Redcliffe 3284 3222

TRAVEL AGENTS



90 Sutton St Redcliffe

Ph: 3284 9222

WRITING SERVICES

MBC PROFESSIONAL WRITING SERVICES . 0432347146
Resumes, Selection Criteria, Web Content

RENU
Fashion

ALL CLOTHING
\$5

RECYCLED CLOTHING SHOP

NOW OPEN

MENS AND LADIES
Fashion
SHOES, BAGS AND ACCESSORIES

Recycle your clothes for store discount

33 Redcliffe Parade, Redcliffe
(Opposite Lagoon) PH: 0402 433 441

TRADITIONAL FUNERALS

Burpengary · Redcliffe · Brisbie Island

- ✓ Personalised Service
- ✓ Uncompromising Quality
- ✓ Ongoing Support

Call 1800 672 331 24 hrs
www.traditionalfunerals.com.au

Find us on facebook.

(07) 3284 1596

IN BLUEWATER SQUARE SHOPPING CENTRE
20 ANZAC AVENUE, REDCLIFFE
OPEN 7 DAYS A WEEK

PHONE & COMPUTER REPAIRS

Casphone
phone repairs accessories

REDCLIFFE

**MITSUBISHI
DIAMOND
ADVANTAGE**

**5 YEAR
NEW CAR
WARRANTY** **4 YEAR
CAPPED PRICE
SERVICING** **5 YEAR
ROADSIDE
ASSIST**



love that car

FREE AUTO

ON AWARD-WINNING TRITON



TRITON GLX 4X4 DOUBLE CAB DIESEL

- 3 TONNE TOWING
- BLUETOOTH® CONNECTIVITY
- 7 AIRBAGS • SIDE STEPS



**FREE AUTO
UPGRADE²**

**FREE ALLOYS
+ REVERSE CAMERA**

\$36,990
DRIVE AWAY¹

TRITON GLS 4X4 DOUBLE CAB DIESEL

- SUPER SELECT 4WD
- DUAL ZONE AIR CONDITIONING
- REVERSING CAMERA
- 17 INCH ALLOY WHEELS
- SPORTS BAR
- FOG LAMPS

**FREE AUTO
UPGRADE²**

\$39,990
DRIVE AWAY¹

ASX LS 2WD PETROL

- 18" ALLOY WHEELS
- REVERSING CAMERA
- TOUCH SCREEN AUDIO

\$25,000
DRIVE AWAY¹



**FREE AUTO
UPGRADE²**

OUTLANDER LS 2WD

- REVERSING CAMERA
- 7 AIRBAGS
- TOUCH SCREEN AUDIO
- BLUETOOTH®

27,990
DRIVE AWAY¹



**\$500 FREE
GENUINE ACCESSORIES³**



**REDCLIFFE
MITSUBISHI**

218 ANZAC AVE REDCLIFFE, QLD 4020

WWW.REDCLIFFEMITSUBISHI.COM.AU

PHONE: 3897 4500

AFTER HOURS: 0421 875 419

MATT BIRTWELL

Sales Manager

While stocks last. Mitsubishi Motors Australia reserves the right to extend or modify these offers. Offers available on new vehicles purchased and delivered between 1st March and 30th April. Excludes Government, Rental & National Fleet buyers. See participating dealers for full terms and conditions. 1. Recommended DRIVE AWAY selling price, including Registration, CTP insurance, Stamp Duty & Dealer Delivery. Excludes Government, Rental & National Fleet customers. 2. Free auto upgrade from manual to automatic transmission on ASX LS 2WD Petrol, Triton GLX and GLS Dual Cab 4x4 3. \$500 free Genuine Mitsubishi accessories on Outlander includes fitment labour and must be redeemed at point of sale. DIAMOND ADVANTAGE: †NEW VEHICLE WARRANTY: 5 years or 100,000km (whichever occurs first). Service conditions apply. * CAPPED PRICE SERVICING: 4 years or 60,000km (whichever occurs first). Covers all items specified under the standard "Regular Service Table" for normal operating conditions detailed in the service and warranty booklet. Additional service/repair items (if required) are at additional cost. ^ROADSIDE ASSIST (Service conditions apply). For purchases of new Mitsubishi vehicles, your initial 12 month roadside assist will be extended for a period of 12 months from the date of the most recent eligible Capped Price Service for that vehicle performed at an authorised Mitsubishi dealer. Roadside assist, if extended in accordance with these items, is available for a maximum of up to 5 years. Conditions apply. See mitsubishi-motors.com.au for further information.