

Redcliffe

FREE AUGUST 2015

GUIDE

BOMBSHELL BURLESQUE

A Night Of Vintage
Glamour & Glitter

Win!

\$450 WORTH
of KITEFEST
GOODIES
UP FOR GRABS

PAGE 30

REDCLIFFE FESTIVAL

KICKS OFF
WITH

KITE
FEST

MURDER MYSTERY AT REDCLIFFE LIBRARY

Meet & Greet With
Dark Visions Author

Program Of Events
& Details **INSIDE**

Cover Photo Courtesy Of Nylon Riot



WINTER SKIN BLITZ

Microdermabrasion & Polishing Peel
+ 3 Skinititut Products

Only \$149* Save \$146*

*T&C's Apply



*Includes three
Skinititut Products

Dolphins Central Shopping Centre
110 Ashmole Rd, Redcliffe

1300 100 470
redcliffe@antiwrinklebrisbane.com.au
www.antiwrinklebrisbane.com.au



BRISBANE
Anti Wrinkle
& Skin Studio
REDCLIFFE

PUBLISHER

Dominic Alberth

EDITORS

Dominic Alberth
Suzi O'Shea

STORIES BY

Suzi O'Shea
Melissa Bailey
Monique Hartman

PHOTOGRAPHY

Paul Neil

EDITOR'S NOTE

Laugh in the face of the arctic vortex, rug up and head outside to look to the skies. August is a great month for star gazing, with crisp night skies offering the perfect backdrop for this month's supermoon.

Keep your eyes to the sky to enjoy the brilliant colours and flair that KiteFest has to offer, with kites, rides, entertainment and plenty more packed into a weekend of excitement.

With wedding season just around the corner, it's the perfect time to head down to the Wedding Expo at the Belvedere Hotel in Woody Point.

Plus there's a cheeky Burlesque show, a Restorative Yoga Workshop, Musicals at the Cultural Centre and so much more. So grab a scarf, keep warm and enjoy this month's issue of the Redcliffe Guide.



Suzi O'Shea

CONTENTS

Events

- 4 Build Starts On Artificial 'Turner Reef'
- 8 Redcliffe KiteFest
- 10 RMT Hits the Stage
- 12 Bombshell Burlesque

Property

- 14 First Class Wedding Expo

Dining Guide

- 16 Property Update - August
- 20 Dining Guide Feature

Cinema

- 22 Dining Guide

Competition

- 28 Hoyts Movie Guide

Community

- 30 WIN! Kitefest Tickets
- 32 Boost the Bruce - Highway Campaign
- 34 Moreton Bay Economy News
- 36 Flying High For Mental Health
- 38 Restorative Yoga
- 49 Tide Times
- 50 Gig Guide
- 52 Local Directory

8

GRAPHIC
DESIGNER
Ashley Tatlock

SALES
CONTACT
sales@redcliffe.net.au

GENERAL
CONTACT
t. 0450 078 200
editor@redcliffe.net.au



14



12



BUILD STARTS ON ARTIFICIAL 'TURNER REEF'

.....

The creation of artificial reefs dates back thousands of years and has had many different purposes. The Ancient Persians created an artificial reef at the mouth of the Tigris River in order to ward off Indian pirates and during Japan's Edo period (between 1603 and early 1868), artificial reefs were constructed in order to improve fisheries.

Artificial reefs attract and sustain a wide diversity of marine life by providing protection from predators, shelter from ocean currents, breeding opportunities and a supply of rich food sources. The variety of habitats created by Moreton Bay's artificial reefs sustain a diversity of fish species and have been designed to benefit a range of fishing techniques—including spearfishing, bottom fishing and game fishing for pelagic species.

The Moreton Bay Region fishing and diving community has turned a keen eye to the Scarborough coastline, as build begins on an artificial reef.

The idea of an artificial reef was flagged about 25 years ago by the Moreton Bay Boat Club.

Dubbed "Turner Reef" after the former Sunfish Moreton Branch chairman, Bill Turner, this addition to the Moreton Bay ecosystem is being built

1km off Scarborough between Drury Point and Castlereagh Point (more commonly, Reef Point).

A keen angler himself, Federal Member for Petrie Luke Howarth MP said fishing in Moreton Bay is becoming more and more sustainable.

"We're seeing locals and the fishing industry working together to develop fishing techniques and practices that don't harm our marine environment.

"Along with providing a recreational ground for local fishermen and divers, Turner Reef will add to the environmental sustainability of Moreton Bay."

Local fisherman and Australian Snapper Fishing forum administrator Damon Bradley said the benefits associated with Turner Reef's construction are wide-ranging.

"It will provide a source of biological replenishment to local populations of marine vertebrates and invertebrates.

"We have dived Turner Artificial Reef since construction began and the footage can be found and viewed on the Turner Artificial Reef Facebook page."

The concrete modules that will form the reef have been weathered for months to neutralise any potential pollutants.

Turner Artificial Reef should be completed by the end of 2015.

Sizes 6-36 B-N

Trading Hours:

Mon-Fri: 9am-5pm

Sat: 9am-2pm

Sun & Public Holidays: Closed

1st Thur of every month open til 7pm

Big Girls DON'T CRY



www.brastogo.com.au | Shop 1a/1806 Sandgate Road, VIRGINIA QLD 4014 | Ph: 07 3265 1811



Big Girls DON'T CRY



We specialise in
Bras, Bridal Torso and Swimwear
Sizes 6-36 B-N



Voucher No: Redcliffe

TATTOO REMOVAL

New Skin Technology

This new tattoo removal skin technology can be used to remove tattoo pigmentation on all areas. Or shaded down to be retouched up. The colours that can be effectively removed are black, blue, purple, red, yellow, green, brown and can take several treatments.



SPECIAL OFFER
10% OFF your
First Treatment
PLUS FREE
Consultations

By appointment only

0417 792 446

www.aaskinsolutions.com.au



skin solutions

COSMETIC CLINIC



Yvette D'Ath MP

State Member for Redcliffe



Visit: Level 1, Bluewater Square Shopping Centre
Cnr ANZAC Ave and Sutton St, Redcliffe

Phone: 3448 7100

Post: PO Box 936 Redcliffe QLD 4020

Email: Redcliffe@parliament.qld.gov.au

A WORD FROM OUR REPRESENTATIVES

Koliana Winchester



It was an honour to support the Redcliffe Environmental Forum and the Green Army Team during their Community Tree Planting Day held on 21st June. Participants enjoyed a morning of tree planting, guided tours

and learning about the rehabilitation of important bushland, including a proposed koala trail.

Capped off with a community barbecue, it was a great day enjoyed by all attendees. It is always good to learn about how to look after a valuable environmental asset such as Hays Inlet.

I am proud that the current budget continues to reinvest in our council division, Redcliffe South, providing support to local community organisations such as Eildon Croquet Club, who will receive \$85,000 for a deck and roof awning extension to provide shade for the growing number of croquet patrons. Also benefiting is the Friends of the Redcliffe Botanic Gardens, who will receive \$102,500 for a new, relocatable building.

Yvette D'Ath MP



The Peninsula provides the perfect setting for hosting events and festivals. Following the successful Redcliffe Show, the Jetty2Jetty Fun Run and What's Cooking in the Gardens, we look forward to next month's Redcliffe Festival. These events

help to showcase the Peninsula lifestyle and stimulate our local economy. I am particularly pleased to have secured additional State Government funding for the 2015 Murri Rugby League Competition that will draw about 36,000 spectators and 52 teams to Redcliffe for the first four days of October.

Our Redcliffe not-for-profit organisations and their many volunteers contribute greatly to our community. I am therefore delighted to announce that local organisations will share over \$217,000 from the latest round of Gambling Community Benefit Fund grants. The successful organisations are Redcliffe Peninsula Surf Life Saving Club, Redcliffe and District Woodcraft Society, Anglican Parish of Redcliffe, Humpybong Yacht Club, Redcliffe Outrigger Canoe Club, Redcliffe Environmental Forum, Redcliffe City Boxing Club, Australian Trade College North Brisbane and Brisbane Convoy for Kids.

Luke Howarth MP



Thank you to everyone who signed my petition for an upgrade to Dolphin Stadium. I handed almost 2,000 signatures to Prime Minister Tony Abbott at Parliament in the last week of June.

I've had a tide of emails from people all over the Moreton Bay region, calling for a local sports precinct. Upgrading the Redcliffe Dolphin Stadium will give a greatly needed boost to our local tourism and small business economy. The Dolphins are contributing \$3m and the Council has already approved the project. I am fighting for this local project to go ahead with a Federal contribution, and I will keep lobbying the Prime Minister for funding.

To add your voice to the petition, please go to www.lukehowarth.com.au/stadium



Jobs. Growth. Opportunity.

- ✓ **Small business and jobs boost**, with tax cuts and immediate tax write-offs for small business and new incentives to hire job seekers.
- ✓ Making **child care more affordable** for lower and middle income families.
- ✓ **Pension certainty**, with increases twice a year at the highest available indexation rate.
- ✓ **Record funding for hospitals, schools and roads.**
- ✓ **Protecting Australians**, with record funding for national security.
- ✓ **Reducing Labor's deficit** – from \$48 billion last year to \$7 billion in 4 years. Reducing the deficit will make Australia stronger and provide more certainty and opportunities for Australians.

LNP LIBERAL NATIONAL PARTY



For more information
budget.lnp.org.au

Authorised by Luke Howarth MP, 40 Hornibrook Esplanade, Clontarf Beach QLD 4019.

Luke Howarth MP
Federal Member for **Petrie**

☎ (07) 3284 8008 ✉ luke.howarth.mp@aph.gov.au

📍 [lukehowarthmp](http://lukehowarthmp.com.au) 🌐 lukehowarth.com.au



Families will get swept away
with fun at this year's

Redcliffe KiteFest

If you thought the 2014 Redcliffe KiteFest was big – wait until you see what's in store this year!

The family-favourite Redcliffe KiteFest will kick-start the Redcliffe Festival program on Saturday 29 & Sunday 30 August at Pelican Park, Clontarf.

"This year with the help of the Redcliffe Kite Club, we are bringing over the world's best kite flyers," explains Melissa Gooderham, "It certainly will be the biggest and best kite display we've ever seen."

The sky will also play host to the thrills of the aerobatic air displays by a Yak-52 and Harvard occurring twice daily.

The usual picturesque backdrop of Moreton Bay will come into the forefront of entertainment when the Stars Down Under Water Ski Show will perform their breathtaking 45-minute show twice daily, featuring barefoot skiing, wakeboarding, pyramids, aerobatics and stunt skiing.

There are family-friendly activities and some exciting news for the younger festival revelers, with a very special guest performance.

SpongeBob Square Pants will be performing his 'Stories from Bikini Bottom' stage show twice daily on the Main Stage.

The Bubz Hub is back this year and is a free 'chill out' space, fully equipped with baby feeding and change areas, plus bottle heating equipment, books and toys.

Also this year is a brand new addition called the Balloon-arium, which continues the celebration of all things in the sky. Over 2,000 individual balloons will be used to create nine different sculptures ranging from 1m-3m in size.

And performances on the Main Stage by some of the best artists from throughout South East Queensland.

Day passes to the Redcliffe KiteFest are available at the gate over the weekend for \$8.00 per adult, \$5.00 per child & concession (16 years and under) and a discounted family pass is \$20.00 (includes entry for 2 adults and 2 children).

Paid parking is available at Dalton Park for an easy 'park and walk' option, or park at the free satellite carpark at the Redcliffe Showgrounds and catch a shuttle bus straight to the festival gates.

Visit www.redcliffefestival.com.au for more information and to plan your Redcliffe Festival experience!



2015 Redcliffe KiteFest

ENTERTAINMENT PROGRAM

SATURDAY 29 AUGUST		
TIME	PERFORMANCE	WHERE
9:00am	GATES OPEN	
9:00am – 3:30pm	Kite Flying Demonstrations	Kite Flying Arena
9:00am – 4:00pm	Joyology Joy Arts	KiteFest Kidz
10:00am – 10:45am	Melissa Kellie	Main Stage
10:00am – 10:45am	Stars Down Under Water Ski Show	Ocean Zone
10:45am	Aerobatic Display	Sky
11:00am – 11:30am	SpongeBob SquarePants Live Show	Main Stage
11:45am – 12:45pm	Memphis Moovers	Main Stage
1:00pm – 1:30pm	SpongeBob SquarePants Live Show	Main Stage
1:30pm – 2:15pm	Stars Down Under Water Ski Show	Ocean Zone
1:45pm – 2:30pm	Faleepo Fransisco	Main Stage
2:00pm	Aerobatic Display	Sky
2:45pm – 3:45pm	Just Like That	Main Stage
4:00pm	GATES CLOSE	

SUNDAY 30 AUGUST		
TIME	PERFORMANCE	WHERE
9:00am	GATES OPEN	
9:00am – 3:30pm	Kite Flying Demonstrations	Kite Flying Arena
9:00am – 4:00pm	Joyology Joy Arts	KiteFest Kidz
10:00am – 10:45am	Hailey Calvert	Main Stage
10:00am – 10:45am	Stars Down Under Water Ski Show	Ocean Zone
10:45am	Aerobatic Display	Sky
11:00am – 11:30am	SpongeBob Square Pants Live Show	Main Stage
11:45am – 12:45pm	The Walters	Main Stage
1:00pm – 1:30pm	SpongeBob Square Pants Live Show	Main Stage
1:30pm – 2:15pm	Stars Down Under Water Ski Show	Ocean Zone
1:45pm – 2:45pm	Jukebox Heroes	Main Stage
2:00pm	Aerobatic Displays	Sky
3:00pm – 3:45pm	Jukebox Heroes	Main Stage
4:00pm	GATES CLOSE	





RMT HITS THE STAGE TO CELEBRATE 5

Redcliffe Musical Theatre has been performing main stage musicals for 5 years at the Redcliffe Cultural Centre, and to celebrate their 5 years of performances they are running a concert series over 2 weekends featuring over 70 performers.

MUSIC OF THE NIGHT - Magical Moments from Music Theatre

A dabble in RMT's past productions and a look at what is yet to come – the performance will feature some of your favourite songs from shows such as Phantom of the Opera, Oliver, Singin' in the

Rain, Les Miserables and of course a taste of our next production MARY POPPINS (March 2016). Featuring a cast of over 50 and bringing back our leads from Phantom – Robert Shearer and Anna Stephens – as well as Simon Chamberlain, Meg Kiddle and Thomas Armstrong-Robley, this will be a night of Musical Theatre not to miss!! Playing for a limited season of only 4 shows from Friday, July 31st to Sunday, August 2nd.

BORN IN THE USA

A celebration of what is uniquely American in popular music, musical theatre and comedy,



YEARS OF THEATRE

from Elvis, The Mamas and The Pappas, The Supremes, and The Beach Boys to Michael Jackson, Guns N' Roses and Madonna. Add a little County and Western. Round it out with some All American Music Theatre such as Chicago and a dash of Rocky Horror and then sprinkle with some classic American humour from Abbott and Costello and The Muppets And hey, presto, you have BORN IN THE USA. Written by Madeleine Johns, this unique take on American theatre will feature many of RMT's favourite performers.



HEEL TO TOE
SHOES & DANCEWEAR

20% off all full priced items.

Shop 2, Sandgate Arcade,
Sandgate Ph: 3269 1968

20% OFF

EXP - 31/08/15

EXP - 31/8/15



Skin Solutions
ACNE & ANTI-AGING COSMETIC CLINIC



Book any skin treatment and receive 10% off

FREE skin examination PLUS free eye brow shape

Further 10% off products

10% OFF

47 Prince Street
Brighton Ph: 0417 792 446

Don't miss the fun and frivolity as RMT takes to the stage from July 31st to August 9th – with 8 shows over 2 weekends and tickets at a reasonable \$35/Adult or \$30/Concession.

To make an enquiry, contact Madeleine Johns on 0488 103 759.

GLAMOUR, GLITTER & GIGGLES:

INAGURAL BOMBSHELL BURLESQUE SHOW IN REDCLIFFE

By Monique Hartman

Fancy a bit of spice with your meal? The Mon Komo Hotel has something to tantalise your tastebuds and your cheeky side this August, when it hosts The Bombshell Burlesque Revue for the first time.

Lead by renowned, award-winning Burlesque chanteuse, Lila Luxx, The Bomshell Burlesque Revue offers an exciting evening of glamorous theatre, music, dance, and nostalgic charm.

A varied program is on offer, featuring several diverse performances by some of Queensland's most accomplished and alluring Burlesque beauties, accompanied by a two course meal, within the sophisticated backdrop of the Mon Komo Hotel.

Lila Luxx is an elegant, extravagant and eccentric performer, and one of Queensland's most in demand showgirls. Known for her exceptional technique and captivating stage presence, she "steals audience's hearts, and then breaks them"!

Known as "The Sparkling Sweetheart", Lila won the People's Choice Award at the 2014 Australian Burlesque Community Awards. As the Director of The Bombshell Burlesque Academy she leads and primes the next generation of Brisbane's burlesque Bombshells in the arts of dance and theatre.

When asked what she loves most about what she does, Ms Luxx explained, "I love that the art of burlesque empowers women to love their bodies and be strong and confident".

Jacqueline Furey, Evie Libertine, Betty Lovecat, Reed De La Paix, and Bailey Bliss complete Ms



Luxx's line-up of showgirls for the evening; their vintage-styled titillating performances sure to warm up the fervent winter crowd.

MC Ella Fontaine is as dazzling as the feature performers and will accompany you in celebrating the skill and magic of these talented soubrettes as they awaken the senses, offering something novel for Redcliff audiences to enjoy.

Recommended for audiences 18+. May contain adult themes and implied nudity.

**Mon Komo Hotel's Burlesque show
will be held on Friday 21st August at
6.30pm.**

**Tickets are \$65.00 per person and
include a two course meal.**

**For more information or to book your
seat, please call 07 3284 6520 or visit
www.monkomohotel.com.au**



**TRADITIONAL
FUNERALS**
Burpengary · Redcliffe · Bribie Island

- ☒ Personalised Service
- ☒ Uncompromising Quality
- ☒ Ongoing Support

Call **1800 672 331** 24 hrs
www.traditionalfunerals.com.au

Find us on:





- Modern Rooms
- Ideal for Mature Business or Leisure Travellers
- Quiet, Clean & Comfortable
- Free Wi-Fi

BOOK NOW!



Find us on:



REDCLIFFE MOTOR INN
 125 Anzac Ave, Redcliffe | PH: 07 3283 4600
 Email: info@redcliffemotorinn.com.au
www.RedcliffeMotorInn.com.au

EXPERIENCE THE FREEDOM OF CONTACT LENSES

**Ask about our
free trial**



Kippa-Ring:
 Peninsula Fair Shopping Centre
 (Opposite Best & Less)
 3889 3516





FIRST CLASS WEDDING EXPO

Local business owner, Lisa Woolhouse of First Class Weddings & Events, will be hosting her ninth Wedding Expo at the Belvedere Hotel on Sunday 30th August.

This boutique event is renowned for being one of the prime boutique bridal fairs in Brisbane, and provides couples looking to get married with the opportunity to meet the "Who's Who in I-Do". The expo showcases businesses from the Redcliffe Peninsula as well as from all over Brisbane. The Peninsula is fast becoming a popular wedding destination and this event has proven popular with many.

Lisa began these expos back in 2006, and in 2011 took the expo to Woody Point after identifying growth in the market on the Northside. Lisa brings a wealth of experience to this event with 11 years in the industry as a wedding planner and decorator. Her workshop has proven to be a draw card, providing bridal couples with expert tips, ideas, money saving assistance and guest speakers discussing pitfalls to avoid when planning your wedding.

The expo will have all the information and sparkle needed for any couple planning their big day such as:

SPARKLING WINE, SWEETS & TREATS - Guests will be greeted with a glass of sparkling wine, delightful Canapés by the host venue & sweets to indulge in.

BOUTIQUE GIFT BAG - The first 80 Brides who PRE-REGISTER ONLINE will receive a pamper gift bag.

WEDDING WORKSHOP - A workshop presented by Lisa Woolhouse, national multi award winning Wedding Planner. With 11 years of Industry Experience and 1000s of weddings under her belt, Lisa has lots of tips to share.

INDUSTRY PROFESSIONALS - Guests can take advantage of the combined wisdom of this group of wedding specialists who will be on hand to answer any questions and bring to life your ideas to help you create your special day.

THEMED ZONE - Visually stunning table displays in a beautiful venue.

FIRST CLASS WEDDING EXPO

WHEN: Sunday 30th August

WHERE: Belvedere Hotel, Woody Point

ENTRY: \$5.00 per person (Online) or \$10.00 per person (at the Door)

Workshop Tickets: \$10 per person (Online & at the Door)

sutton street



shoes

Are you ready for the EKKA?
We have comfy, cushioned & supportive footwear
that will ensure you have the best day possible!

Lots of excellent bargains to be found
on our SALE tables out the front of
the store which have been
further reduced.

Bluewater Square Shopping Centre
Cnr Anzac Ave & Sutton St Redcliffe



Ph 07 3889 3639 | email: sss@shoefeats.com.au



Breakaway Inc



GALA Saturday October 24th
FUNDRAISING
EVENT Redcliffe RSL
Doors open: 6.30pm

CHARITY AUCTION
AUCTION PRIZES

LUCKY DOOR PRIZES. LIVE
ENTERTAINMENT, PHOTO BOOTH..

*All funds raised directly benefit the
children and adults we support*

\$60.00 per head

For more information please contact:

Veronica Vivian

P: 3883 1099 or M: 0404 698 361

E: breakawayhouse@bigpond.com

Pam's
Affordable
Gifts

DIECAST CARS • CLOTHES
JEWELLERY • JEWELLERY BOXES
INCENSE • MOSAIC MIRRORS
NIGHT LIGHTS & lots more...

Something for everyone!

140 SUTTON ST REDCLIFFE

MONDAY-FRIDAY 10AM-5PM
SATURDAY-SUNDAY 9.30AM-4PM

0418 797 241



AUGUST PROPERTY UPDATE

Ian McLachlan

With property prices rising in New South Wales and Victoria, Redcliffe is now experiencing an increase in investment purchases from southern buyers as they are finding more bang for their buck in the Queensland market.

We have also noticed interstate investors are using their self-managed super fund (SMSF) to make these purchases as they can see the potential for capital growth and better returns from the properties they are buying.

One of the significant advantages of having a property in a SMSF includes tax breaks. Your

super fund will be taxed at a considerably lower rate than most people's personal tax rates. Also, if the asset is sold while the super fund is in pension phase, it's tax free.

Remember though that you cannot live in or have a family member live in a property purchased through a SMSF.

Before you leap in, you need to ask yourself:

- If you use your SMSF to buy property, what sort of property should it be?
- Is the property a good investment?
- Will it appreciate in value?

When preparing and reviewing your investment strategy, take into account the personal circumstances of all the fund members; age, fund assets, ability to pay benefits and retirement needs will all make a difference when considering to use super to invest.

Drop by and see Jody, Ian or one of the team at 91 Marine Pde, Redcliffe for a cuppa and an obligation-free chat.

Quick Stats - Redcliffe

Lowest 3 Streets in the Suburb by Median Value

Street Name	Median Value
Longland St	\$265,007
Centaur St	\$269,289
Klingner Rd	\$285,336

Top 3 Streets in the Suburb by Median Value

Street Name	Median Value
Marine Pde	\$594,363
Prince Edward Pde	\$579,291
Kristen Ct	\$543,300



Current Measurement	Houses	Units
Median Value	\$385,500	\$355,000
Median Weekly Rent (Gross)	\$365	\$340
Suburb Rental Yields	4.93%	5.03%
Annual Number Of Sales	179	196
Number Of Dwellings	3,059	2,993

As at 18/7/2015

Data: Onthefhouse.com.au



CROWN

PROPERTIES

REAL ESTATE

- Property Sales & Purchases
- Project Marketing
- Investment Property Management
- Unit Specialists



Ph: 3283 3313

www.crownpropertiesqld.com.au

*Dedicated to
Professional Service
and Achieving
Optimum Results*

VOX POP

Suzi O'Shea

Photos by Paul Neil

.....

With wedding season almost upon us, we hit the streets asking locals about their proposal story.



**TANIA
MERRILEES,
REDCLIFFE**

After a horrendous day looking at property developments, my partner asked if I wanted to go shopping.....for a ring!



**CHRISTINA &
DAVID KUHN,
TOOWOOMBA**

We went out for dinner and then went to a park in Toowoomba and David asked me on one knee.



**SHELLEY LYONS
& SAM RUSSO,
MARGATE**

We had a dinner date and Sam got down on one knee and proposed. I was so shocked I asked him to do it again. And he did.



**SIVANI &
PRANESH
MCLAIN,
SANDGATE**

We had been travelling in Asia. We went to a gorgeous restaurant in Lao and Pranesh got down on one knee and asked me to be his wife.

REDCLIFFE

Dining

GUIDE



Over There Cafe - Photo by Paul Neil

REDCLIFFE *Di*

OVER THERE CAFE - REDCLIFFE

Catherine Crawford's beginning as a café owner came about in the most unconventional of ways. A good friend, Ruth, had opened a café in Melbourne and asked Catherine to go and work for her. Catherine was hesitant at first, as she had no experience in the hospitality industry. She wasn't sure she knew what to do. Ruth assured her that her years of experience as a mum and her friendly disposition would be more than enough. As she was a good friend, Catherine agreed to work with her.

Ruth really didn't like the café business at all. "I can't handle this," Ruth said. "People are complaining about their long black. You just run it, Catherine." It was this exasperated plea from her friend Ruth that led to Catherine running the café in a matter of weeks after starting her very first role in hospitality. After 8 months, Ruth had sold the café and by this time, Catherine made the decision to buy her own café.

With the help of a very clever husband running the show behind the scenes, Catherine learned the tricks of the trade and how to run a successful business. After three and half years, they sold that café in Melbourne to move to Redcliffe.

Having spent four years apart due to work obligations, Catherine and her daughter were reunited in Brisbane. Meagan had always wanted to own her own shop so the family joined forces and bought the available space at the Dolphins Precinct in Scarborough, shortly after unveiling Over There Café in April this year.

Now with 15 years experience in hospitality under her belt, Catherine, with the help of her daughter



Mother and daughter team

Photo: Paul Neil

Meagan, are turning this place into a café that will have a variety of delicious meal options and provide great service to leave customers feeling satisfied.

As a family that maintains a healthy lifestyle, they offer food choices inspired by healthy living.

Since opening in April, the Crawford's have already established themselves in the area with a large crowd of regulars coming back for the amazing coffee.

Be sure to pop in and say hello and try their amazing hot white chocolate as a tasty winter warmer. And a big congratulations to Meagan, who will be married in August.

Over There Cafe

Shop 7 Dolphins Central,
Ashmole Rd, Redcliffe
Ph: 3203 6510

ning GUIDE



Name: Hggt 'Vngj g'ZngdXkzgj xgt z

Address: 95 Prince Edward Pde, Scarborough

Cuisine: Thai

Feature: Real Thai food - come in for take away, dine in, or call us for delivery. We're open Tuesday - Sunday 4.30-9.00 pm . We can do functions and we are also fully licensed.

Contact: 3880 3477

BANN PHRAYA THAI



Name: Hggt dHkgi n'l glk

Address: Shop 2 / 77 Redcliffe Pde, Redcliffe

Cuisine: Homestyle & modern Australian

Feature: We offer a variety of freshly prepared dishes for both breakfast & lunch in a warm, friendly, relaxed atmosphere.

All with breathtaking views across Moreton Bay

Contact: 3883 1515



Name: 'Hgj 9'ut 'znk'Hgj

Address: 109 Margate Pde, Margate

Cuisine: Modern Australian

Feature: All tables overlook beautiful Moreton Bay. Steak, seafood, poultry and pasta. Best roast duck in Redcliffe. Open Tue to Sat night from 5.30pm, Sat lunch from 11.30am. Tue 2-4-1 main meals Thur 3 course \$24.95. Fully licensed cocktail bar.

Contact: 3283 1888

REDCLIFFE

Dining GUIDE



Name: Hrgi q'Uṛø k

Address: 303 Oxley Ave, Margate

Cuisine: Chargrill Pizza Bar

Feature: Handmade pizza bases, Marinated in-house chargrill meat, fresh ingredients and passion for food combine to create the best food. All food items under \$20. We also offer free home delivery.

Contact: 3889 5550

BLACK OLIVE



Name: I gi ǻ y'Pgi qy

Address: 165 Redcliffe Pde, Redcliffe

Cuisine: Tex Mex

Feature: Great Steaks, Sizzling Fajitas and authentic Mexican served with a full cocktail list and up to 16 Beers on tap.

Open Mon-Thurs 5pm to Late, Fri-Sat 11:30am to Late and now open for Breakfast on Sunday from 8:30am

Contact: 3284 7990

CACTUS JACK'S
— Tex Mex Bar & Grill —



Name: I nuv'I nuv'Y{ yno

Address: 83 Redcliffe Pde, Redcliffe (next to Rustic Olive)

Cuisine: Japanese Restaurant & Sushi Bar

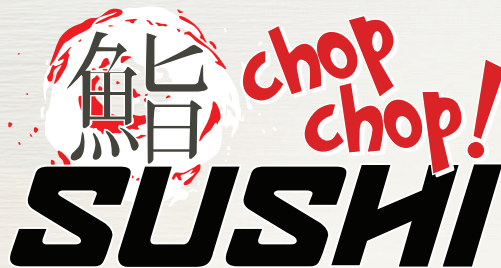
Feature: Exciting new Japanese restaurant on the peninsular waterfront offering fresh Japanese seafood, variety of sushi & traditional Japanese hot dishes. come, experience Japan right here in Redcliffe.

Contact: 3283 1475

chop chop!
SUSHI

**OPEN
NOW!!**

Konnichiwa!!
From
chop chop sushi



Exciting
new Japanese
Restaurant
& Sushi bar!

Monday

Night Madness

\$2.50

everything on the train

Dinner service only from 5PM



Tuesday

Japanese Pizza day

for only **\$11.90**

add a Asahi beer for \$3.00

Wednesday

Gyoza Day

choice of Chicken, Pork
Prawn or Vege gyoza

for only **\$3.50**



Open 7 days 10:30AM~8:30PM | 83 Redcliffe Parade (next to Rustic Olive)

07 3283 1475

REDCLIFFE *Di*



Name: Muuj 'l dñky'Kyyv̄kyyu

Address: Cnr Anzac Ave & Suttons St, Redcliffe

Cuisine: Specialty Coffee, Cakes and Slices.

Feature: Fun, pet & family friendly cafe where we use the TXT4Coffee app for convenient coffee pickup. Special events evenings.

Contact: 0405 393 883



Name: S gxi ut dñ ullkk

Address: 295 Oxley Ave, Margate

Cuisine: Cafe

Feature: Friendly cozy feel with great service, excellent locally grown organic coffee and home made treats! Catering Available.

Contact: 3283 3439



Name: S ut 'Qus u'Nuzkr

Address: 99 Marine Pde, Redcliffe

Cuisine: Steak & Seafood

Feature: Overlooking sparkling Moreton Bay, the hotel delivers fresh seafood, great steaks and other Pacific inspired dishes in a resort style atmosphere.

Contact: 3284 6520



ning GUIDE



Name: S uxkzut 'Hg; 'Hugz'l r' h

Address: Bird O'Passage Pde, Scarborough

Cuisine: Steak and Seafood

Feature: Dine overlooking 118 berth Marina and the Glass House Mountains. MBBC is a fully licensed Restaurant offering lunch and dinner 7 days a week.

Café open Tues – Sunday from 8.30am (Sunday breakfast from 7.30am).

Contact: 3203 5188 – bookings preferable



Name: U| kx'Znkxk'l glk

Address: Shop 7 Dolphins Central, Ashmole Rd, Kippa Ring

Feature: Open 8 – 4 every day for breakfast and lunch. Relaxed atmosphere to enjoy great coffee, selection of teas and cakes with a fantastic range of gourmet meals to choose from including gluten free and vegetarian options.

Contact: 3203 6510



over there cafe
see you there



Name: Xkkl'Vuđ z'l glk

Address: 75 Redcliffe Pde, Redcliffe

Cuisine: Modern Australian

Feature: Modern Australian Food with the best views. Open for breakfast & lunch 7am-4pm. Functions & specialty. Day or night.

Contact: 3880 0250
mandy@reefpointcafe.com.au



REDCLIFFE

Dining GUIDE



Name: Ykg'Ygrz'gt j 'd k'l glk

Address: Reef Point Esp, Scarborough (situated behind caravan park)

Cuisine: Modern Australian

Feature: Looking for a tranquil place to enjoy a quality breakfast, lunch or relaxing coffee – overlooking the water with Glass House Mountains views we are open 7am til 4pm everyday.

Contact: 3880 4456



Name: Znk'Gs hgyygj ux'Ul'Xkj i rðlk

Address: 41 Redcliffe Pde, Redcliffe

Cuisine: Steak & Seafood

Feature: The Ambassador Of Redcliffe offers a variety of sumptuous food, freshly prepared by our talented kitchen staff.

Contact: 3284 6424

Ambassador
OF REDCLIFFE



Name: Znk'Murj kt 'U~"

Address: 330 Oxley Ave, Margate

Cuisine: Modern Australian

Feature: Our motto is great food and awesome service. Head Chef Peter and Chef Shannon Farmer take inspiration from around the world, with the latest menu reflecting many international flavours.

Contact: www.thegoldenox.com.au



SEAFOOD MONDAY

\$14.95

fillet of
snapper

traditional
garlic
prawns

seafood
sensation

panko
crumbed
calamari

giant
serve

SCHNITZEL TUESDAY

Schnitzels with Selected Toppings

\$14.95

WEDNESDAY STEAK DAY

with choice
of sauce
\$14.95

Add a
topper for
\$3

300g
Black Angus
rump

CHIPS & SALAD

LAMB SHANK THURSDAY

\$14.95

now
serving
at...

SCHOONER'S
bistro

Ambassador
OF REDCLIFFE

41 Redcliffe Parade Redcliffe 4005
ambassadorhotel@wellerhotels.com
ph 3284 6424

like us on
facebook



RICKI & THE FLASH



Three-time Oscar winner Meryl Streep goes electric and takes on a whole new gig – a hard-rocking singer/guitarist in the uplifting drama Ricki and the Flash.

In a film loaded with music and live performance, Streep stars as Ricki, a guitar heroine who gave up everything for her dream of rock-and-roll stardom, but is now returning home to make things right with her family.

Release Date: 27th August

Cast: Meryl Streep, Rick Springfield, Sebastian Stan, Kevin Kline, Mamie Gummer



TRAINWRECK



Since she was a little girl, it's been drilled into Amy's head by her rascal of a dad that monogamy isn't realistic.

Now a magazine writer, Amy lives by that credo - enjoying what she feels is an uninhibited life free from stifling, boring romantic commitment - but in actuality, she's kind of in a rut.

When she finds herself starting to fall for the subject of the new article she's writing, a charming and successful sports doctor named Aaron Conners, Amy starts to wonder if other grown-ups might be on to something.

Release Date: 6th August

Main Cast: Amy Schumer, Bill Hader



THE MAN FROM U.N.C.L.E.



It's the swinging 60s, the time of the Beatles and the very height of the Cold War. CIA agent Napoleon Solo and KGB operative Illya Kuryakin are recruited by a multi-national spy organization called U.N.C.L.E. (United Network Command for Law and Enforcement) to take on a top-secret assignment: Stop a mysterious international criminal group working to further destabilize the relationship between the USSR and the USA by putting nuclear weapons in the hands of terrorists.

Release Date: 13th August

Main Cast: Henry Cavill, Armie Hammer, Alicia Vikander, Elizabeth Debicki, Hugh Grant

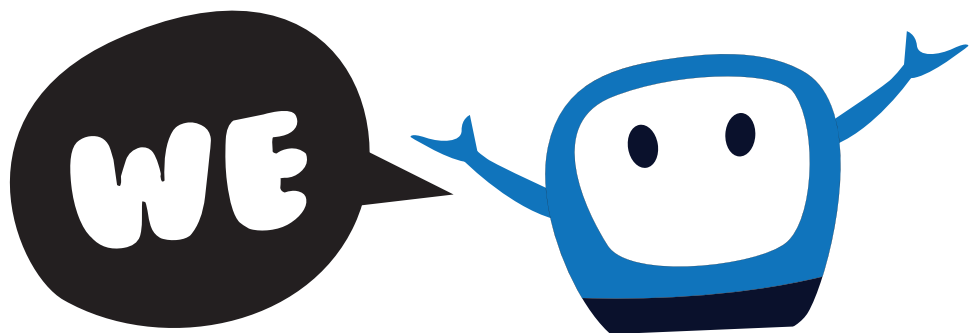


COMING IN AUGUST

• The Fantastic Four	6th	• Hitman: Agent 47	20th
• Trainwreck	6th	• Southpaw	20th
• Man From U.N.C.L.E.	13th	• We Are Your Friends	27th
• Vacation	20th	• The Gift	27th
		• Ricki and the Flash	27th

Subject to change, check website for more details.

Email editor@redcliffe.net.au by 27th August for your chance to win a double pass to any movie.



**SERVICE
SELL &
REPAIR
COMPUTERS**

brisbanecomputersolutions.com.au

**BRISBANE
COMPUTER
SOLUTIONS**

**38 BRIGHTON TCE,
SANDGATE
P: 3122 3303**

WIN!

KITEFEST GOODIES

The **Redcliffe KiteFest** is a component of the 2015 Redcliffe Festival, held over two massive weeks from 29 August to 13 September, boasting a dynamic program of free and ticketed events.

“Renowned for its world-class kite show, this year’s Redcliffe KiteFest won’t disappoint,” promises Melissa Gooderham, Moreton Bay Region Industry & Tourism’s Events Manager.

For your chance to win one of 10 Family Passes to Kitefest, plus an all day rides wristband, valued at \$45 each, simply email your name, phone number and suburb to editor@redcliffe.net.au by 20th August 2015.

If your business would like to get involved in promoting a giveaway, email Suzi on editor@redcliffe.net.au



CONGRATULATIONS

Indie Layne rockabilly
competition winner

Kylie Gilroy from Clontarf

Hoyts movie tickets
winner

*Terese Colovic from
Rothwell*

Be quick,
last remaining
apartments!

It's time for the retirement you deserve!

Take a look at Bramble Bay Retirement Village on our **Open Day - Saturday 15th August** from **9am - 12n**, Ward St, Sandgate.

Bramble Bay Retirement Village offers retirees spacious, air-conditioned, contemporary apartments and refurbished villas, designed for easy living.

With community facilities,

an active social life, secure parking, 24-hour emergency call, support services available and co-located residential aged care should you need it; there's no reason why you can't have peace of mind.



Residential aged care on the same site



Community facilities and social activities

Call Nadine on **07 3869 6100** to secure your retirement lifestyle!
Entrance via Ward St, Sandgate.
www.masoniccareqld.org.au





BOOST THE BRUCE

Federal Member for Petrie Luke Howarth MP has teamed up with three federal MPs and a Queensland senator to launch a campaign to upgrade the Bruce Highway to six lanes from the Sunshine Coast to Brisbane – easing the stretch’s notorious early morning and weekend gridlock and lifting the Coast’s tourism potential.

The announcement was made alongside Deputy Prime Minister Warren Truss’ commitment today of \$8 million to fund planning for priority upgrade works on the Bruce Highway between the Pine River and Caloundra Roads.

The federal government is providing \$6.4 million towards the study, with the state tipping in \$1.6 million.

Mr Truss said the funding “is another step forward in our plans to fix the Bruce Highway. It will allow for high-level planning to help determine the capacity, flooding and safety issues along this 60 kilometre stretch of the highway.”

Luke Howarth MP said safety and traffic capacity issues, as well as reducing or eliminating the

impacts of flooding on the highway, will be a priority.

As well as an extra two lanes on the Bruce between Caloundra and Caboolture, the Transport and Main Roads department report will investigate options for upgrading the Gateway Motorway between Deagon Deviation and the Bruce Highway.

“The hope is that we will see the highway widened to six lanes from Brisbane to the Sunshine Coast,” Mr Howarth said.

Mr Roy said he expected the Boost the Bruce campaign to attract wide public support. “For hundreds of thousands of commuters who use this section of the Bruce Highway, these upgrades will change their daily lives and bust a horrific grind,” Mr Roy said.

Construction is also expected to start later this year on a four to six-lane expansion of the Gateway Motorway between Nudgee and Bracken Ridge.

The federal government has a \$929 million investment in the Gateway Upgrade North project, with the state government providing \$232 million.

U{ zñíÓhu{ z
} an"Vnuzumgvnkv



Paul Neil

Vòy"ul"vkuvik"gt j "rdk
These pics and more on my blog at
www.paul-neil-photography.com
and follow us on facebook



Sweet ride! Chris Sweetten, a paraplegic, stops for a breather on his 27 gear hand cycle on his Saturday ride from Redcliffe to Shorncliffe and back.



A likely story! Cyclists, Ian Rauber and Steven Andrews, conveniently got a flat tyre right outside Feel Goodz Gourmet Café, Woody Point -and so stopped in for coffee!



Bon voyage! Jordyn and Mitch are last minute shopping on Redcliffe Parade before they take off on a big European trip together.



"Where shall we go?" Leanne Mouatt and Chris Marjoram are out 'n' about in Redcliffe for coffee without the kids.



Orange Whip? Scott Keenan and his Blues Brothers are heading off from Redcliffe to Rocky in their 76 Ford Falcon to raise money for Endeavour Foundation.



Is that a mullet? Bogans, Rob Bob and Jimbo, are on their way in the Endeavour Rally from Redcliffe to Rockhampton via the Whitsundays.



MORETON BAY ECONOMY STRONGEST IN STATE

The Moreton Bay Region has the strongest economy in Queensland, according to the Australian Local Government Association's 2015-16 State of the Regions Report.

The report, which analyses data from every local

government area in Australia, ranks Moreton Bay's economy as No. 1 in the state.

Moreton Bay is also ranked No. 14 out of the 67 regions in Australia.

Moreton Bay Region Mayor Allan Sutherland said the results reflected council's commitment to driving sustainable growth for the Moreton Bay Region.

"As the State of the Regions Report shows, Moreton Bay has experienced strong economic growth over the past twelve months and the region continues to grow even stronger," Mayor Sutherland said.

"We have excellent employment rates and reasonable housing affordability compared to other parts of the state - so more and more people are moving into the region; the availability of land here means new commercial developments are springing up everywhere.

"There's evidence of forward momentum everywhere, and it's attracted big international businesses such as Ikea and Costco.

"The completion of the Moreton Bay Rail Link is going to drive growth even higher. Confidence in the Moreton Bay Region is at an all-time high."

More than 12,300 jobs were created in the Moreton Bay Region in the last 12 months. The region also led the state in residential lot sales and was in the top two council areas for lot registrations.

Shane Newcombe, Chair of Regional Development Australia, Moreton Bay and Managing Director of the newly established Moreton Bay Region Industry and Tourism (MBRIT), said he wasn't surprised by the findings of the State of the Regions Report.

"This is great news for Moreton Bay, but hardly surprising. The report confirms what we have known for some time - that the Moreton Bay Region and its economy is one of the fastest growing in Australia, driven by significant population growth," Mr Newcombe said.

The Moreton Bay Region is on track to achieve strong economic growth again this year, with major commercial and infrastructure developments creating thousands of jobs across a number of sectors, including construction, retail and tourism.



GET
MOOOO
OOOOOOO VING
TO THE BEL!

Steak & Crabhouse

Cnr Woodcliffe Cr & Oxley Ave Woody Point QLD | P 3284 2245 | www.belvederehotel.com.au

*Terms & Conditions apply. DRINK INTELLIGENTLY Managers and Staff at the Belvedere Hotel promote responsible service of alcohol.



FLYING HIGH FOR MENTAL HEALTH AWARENESS

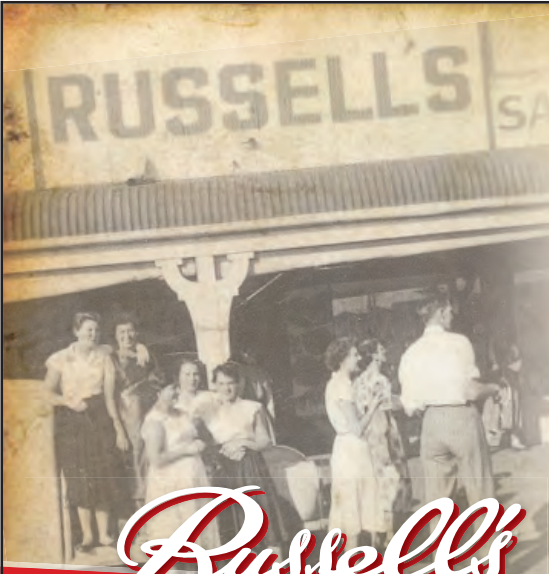
By Melissa Bailey

Mental illness is still something that most Australians have trouble discussing, despite the fact that one in five Australians will experience a mental illness in their lifetime. In an effort to reduce the stigma surrounding mental illness and to promote the importance of mental well-being, a fly-in, fly-out worker and a medical student, Jerom Fox and Adrian Luscombe, have commenced a 14,000 kilometre journey around the Australian coastline.

Beyondblue, a not for profit organisation that provides information and support for people

suffering mental illness, is sponsoring Fox and Luscombe to make the huge journey on-board a light aircraft, with Fox as its pilot. Flight Beyond was an idea that was sparked during a discussion between the pair about the difficulties of maintaining mental well-being in their respective industries and after Fox completed his study for a pilot license.

Having raised more than \$7000 in the first week alone, the pair have some big donations coming in, contributing to Beyondblue's work in the mental health field. Beyondblue encourages Australians to ask for help early. The organisation has a range of programs to cover all Australians and has various methods of contact,



Celebrating
60 YEARS
in Sandgate

AUGUST SUPER SPECIALS

Patchwork & Quilt Fabrics
 \$5.99 per metre

240cm wide Quilt Backings
 \$9.95 per metre

Lace Edging & Trims
 1/2 Price

MANY MORE SUPER SPECIALS

ph: 3269 1442
 43 Brighton Rd, Sandgate

Russell's
EST 1955

Dress Materials and Patchwork and Quilting Fabrics

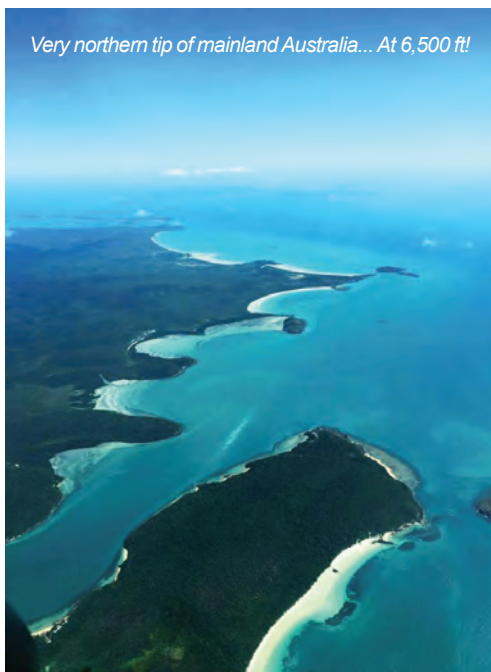
including a 24/7 telephone service, a web chat and email.

Luke Howarth MP has donated to the cause, adding, "As much as we strive to be strong men and women and to bring up our children to be confident and happy people, we all deal with so much each day that it's easy for us to neglect our mental health. It's easier still for us to go day by day, without realising that someone close to us, or maybe that neighbour across the road or our friend down the street is suffering from mental illness. I want to congratulate everyone involved in Flight Beyond for starting this vital conversation with communities around Australia."

Visit www.beyondblue.org.au to get immediate support.

Follow Flight Beyond at www.facebook.com/FlightBeyondAU and donate at <https://give.everydayhero.com/au/flightbeyondaustralia2015>.

Very northern tip of mainland Australia... At 6,500 ft!





Shelley Lyons inside her Yoga Studio 'Bodhi Wisdom'

ESCAPE THE DAILY GRIND WITH RESTORATIVE YOGA

“We live in a fast and furious world these days; yoga for me is a way of coming home, reconnecting with my body and mind, and simply letting go of day to day stress through asana (poses) and breathing,” said Shelley Lyons, owner of Bodhi Wisdom Yoga Ayurveda & Massage.

Shelley trained with Judith Lasater from California, a leading Restorative Yoga therapist and Physical Therapist, in 2010. She has been teaching yoga for the last 10 years. “I was instantly drawn to yoga in my 20s; it gave me a sense of peace and wellness I had never experienced before, and was extremely beneficial for the long hours I spent on my feet in the hospitality industry,” says Shelley.

Shelley started teaching yoga in Redcliffe 9 years ago. She teaches various styles of yoga, including vinyasa, yin and restorative. Bodhi Wisdom offers classes Monday to Friday, with 3 qualified yoga teachers and a variety of classes ranging from yoga for seniors to yoga for pregnancy.

There are many different styles of yoga offering wonderful health benefits. Restorative Yoga is a

specialised field, with each posture offering the practitioner an opportunity to improve immunity, release stress, and let go of tension, pain and tightness in the body. Restorative yoga offers deep states of rest, to calm the mind and the central nervous system, inducing peace and harmony.

Yoga is a compass; it brings you back home, to create space and to give you the ability to get out of your head and into your heart. If we all did yoga the world would be a better place.

For the ultimate wind-down, join Shelley as she takes you on a restorative yoga journey.

Sunday 9 August 2.30 pm – 6.30 pm

\$55 includes a delicious ayurvedic meal after the practice.

Spaces are limited, call 0416069091 to book your space.

**Bodhi Wisdom
Yoga Ayurveda Massage
18 Webb Street, Margate
M 0416 069 091
bodhiwisdomyoga@gmail.com**

**Family Friendly
Kids Room
Breathtaking Views**

From **\$9.90 Lunches**
to a **Oceans Delight for \$22.90**
We have got you covered



**1 of 6
\$9.90 Lunches
to choose
from**



**Works Burger
& Chips**

**Oceans Delight
\$22.90**

Breakfast & Lunch

6 Days

7am to 4pm Tue to Fri

7am to 5.30pm Sat & Sun

Closed on Monday

SUPER BY NAME, SUPER BY NATURE

By Melissa Bailey

This year will prove to be a significant year when it comes to astronomical history. Jupiter and Venus were easily seen with the naked eye in June, and we will be lucky enough to see six supermoons throughout the year. A supermoon is a new or full Moon that closely coincides with the Moon's closest point to Earth in its orbit.



The supermoon affects the Earth's tidal patterns, with larger than usual tides during its appearance. Tides roll around the planet as the ocean is moved back and forth by the Moon and Sun's interaction with the Earth. There are times that the Sun and Moon are close to the Earth and times when they are farther away. When the Sun and Moon are close to Earth their gravitational pull is stronger, which causes higher tides. So naturally, the presence of a supermoon causes a great gravitational pull and subsequent high tides. Don't be alarmed though. Despite the idea that high tides will cause flooding, it is unlikely unless there is an accompanying strong weather system.

The next supermoon can be seen in the Eastern skies of Redcliffe on August 30. However, a potentially greater astronomical occurrence will be seen in the same location on September 29, when the full Moon will be the closest supermoon of the year. It will also stage a total lunar eclipse, which occurs when the Earth's shadow blocks the Sun's light from directly reaching the surface of the Moon. Essentially, a lunar eclipse occurs when the Sun, the Earth and the Moon are directly aligned with one another to create an exact straight line. Instead of the Moon appearing as shining in its commonly seen bright white colour, the Sun's light will refract off the Earth and present the Moon in a red hue. Also known as the blood moon, the red Moon will appear large and close to the Earth with a dusty red surface.

It's worth noting that the term supermoon is not an astronomical term, and astronomers prefer the term proxigee full moons. Keep your eyes on the skies.

You can see the supermoon in all its glory from the 28th of August to the 1st of September. Head down to the waterfront anywhere on this gorgeous peninsula for truly spectacular views.



WOODSTOCK *range*



OLD DOOR *range*

These ranges of furniture are rich in texture and colour. Both created with sustainable Mangowood which is a renewable resource.

Redcliffe Store

177 Redcliffe Parade, Redcliffe QLD

p: (07) 3284 3222 **OPEN 7 DAYS**



Find us on facebook
Vast Interior Redcliffe

www.vastinterior.com.au

VAST
interior
furniture & homewares



SPINE-TINGLING CRIMES

Growing up in the coalfields of the Hunter Valley in New South Wales, Janice developed a passion for writing after winning an inter-school essay contest on unionism at age eleven. When she clutched that monetary prize in her hand she realised she could earn money for doing something she loved. Work and family eventually took over; however, that spark remained, and over the past fifteen years Janice has managed to fit many creative writing workshops into her busy life – and to feed her imagination.

Her new book, *Scent of Evil*, is a cosy mystery and is a sequel to *Dark Visions*. These two books reveal the lives of Meg Pilley, a psychic, and her husband, grumpy, homophobic Clyde.

Dark Visions is as deep and dark as the title suggests. The novel explores the dark sides of a number of individuals who are interconnected in different ways – by blood, marriage, friendship, work, business, geography and the past. Meg visualises a gory pool of blood. She knows someone will be killed, but can't work out who it is. She digs deeper into the spirit world for answers. Who is the kingpin drug lord? Who can they trust?

In *Scent of Evil*, Meg and Clyde Pilley join the bowls club, but encounter turmoil they hadn't bargained for.

A bowls player drops dead, and the bitter almond smell indicates cyanide poisoning.

Then Meg realises a cold-blooded killer is murdering the elderly before smoking a cigar to celebrate. The only clue is the cigar smoke. Is that enough for psychic Meg to track down the evil predator?

Janice is currently writing a third book in the series.

The Caboolture-based author will have audiences channelling their inner detectives as she tells the tales of amateur sleuths Meg and Clyde, who are tasked with solving a series of murders before they even happen.

Come out of the chill and into the thrill during August. The romance and mystery author's talks are free and bookings can be made by emailing libraries@moretonbay.qld.gov.au or calling 3205 0555.

Event details:

- August 12, 10am – Deception Bay Library
- August 22, 2pm – Redcliffe Library



Runtime Design

DESIGN • SIGNAGE • PRINT • WEB

**Bespoke Innovative
Design & Branding Specialist**



CALL US TODAY: 1300 881 152

A: 82 Sutton Street, Redcliffe E: sales@runtimedesign.com.au

w: www.runtimedesign.com.au

COMMUNITY UNIVERSITY FOR OVER 50S

By Melissa Bailey

University of the Third Age, or U3A, is a university like no other. You may have heard of U3A Redcliffe Inc., which is a community of semi-retired and retired members aged 50 years and older who join together to enjoy classes on a variety of subjects throughout the school term.

“Learn for leisure and pleasure, with no examinations or pressure,” says Ann Skelton of the U3A Administrative Team.

All classes are run by volunteer tutors with a special interest or expertise. These classes allow community members to meet like-minded people who enjoy all sorts of learning experiences, including stage-works, computer classes, arts and crafts, history and singing with gusto to name a few. There are more than 75 different classes held at the Sutton Street Campus. Social events help build and maintain friendships and include bus trips, morning teas, and concerts. Because all of the tutors are volunteers, the cost of courses are kept to an absolute minimum; some

are as little as \$2 a class. Some courses may require the purchase of a book or photocopies.

If you think you might be interested, go along to U3A's main information event at What's Cooking in the Gardens at the Redcliffe Botanical Gardens on August 2 to meet some of the volunteers, chat about classes and pick up a schedule of classes offered this term.

U3A will be holding a variety concert at the Redcliffe Cultural Centre on August 20 at 10am. “Young at Heart” showcases song, dance, ukulele and other musical items. With a variety of classes contributing to the show, it should include something for everyone. Tickets are \$9 and are available online.

If you're interested in joining U3A as an over 50s member or a volunteer tutor or volunteer helper, please call (07) 3284 2687 or visit www.u3aredcliffe.org.au

For tickets go to www.moretonbay.qld.gov.au or purchase at the Redcliffe Cultural Centre.



STICKAGUY

Custom Graphics & Signs

- Vehicle Graphics
- Small Stickers
- A Frames
- Damaged Photo Repairs
- Shop Fronts
- Caravan Stickers



*No Job Too Small,
No Design Too Hard*

*Stickaguy will take
the work that
others dont want.*



before



after

0434 130 548

stickaguy@outlook.com



HOW IT ALL BEGAN: REDCLIFFE MEALS ON WHEELS

Thirty nine years ago, Redcliffe Meals on Wheels commenced its service to the people on the Peninsula.

For Agnes Page, the year 1967 was to mark the beginning of years of dedication and love for this service, which enables the frail, the aged and/or sick people to stay in their own homes for longer than would normally be the case.

Jack Page, Agnes' husband, was President of Redcliffe South Rotary during that time, and together with Dr. Peter Marendy and other members, they formed a Meals on Wheels Service as their special project for the year.

Agnes and several other ladies took up the challenge, and cooked and delivered approximately 14 meals a day from a room at the rear of Sutton House. The first meals were delivered on 24 July 1967 by Agnes Page and Ivy McCasker.

Agnes became the Treasurer of the newly formed committee, a position which she held

for 30 years. Agnes was a truly remarkable and much loved lady, who worked and watched with pride as her beloved service expanded to the large organisation it is today. She had a way with people, and as many would remember, there were more than one or two who found themselves on the committee, owing to her persuasive nature.

Agnes brought qualities of sincerity and a sense of humour and of duty to various organisations on the Peninsula over the years. She loved music and was involved in the establishment of the Redcliffe Choral Society in 1949. Agnes' other community work gained her awards such as the Redcliffe Quota Woman of the Year in 1980, a Paul Harris Fellowship, Honorary Earl of Shaftsbury and a Queensland Premier's Award.

She remained on the committee until 2005 and almost to the last moment, kept up to date with what was happening at the Kitchen.

Ref: Redcliffe Herald 1/11/2000, excerpts from a eulogy by Aileen Colley on 7/9/2006 and Museum records.



SCHOOL FETE

◇◇◇ Saturday, August 29 ◇◇◇
11am-4pm

**EVERYTHING A TRADITIONAL
COMMUNITY FETE
HAS TO OFFER,**

including entertainment,
amusement rides, delicious
food, baked goods, crafts and
much, much more.



facebook.com/brightonssfete



Brighton State School Fete

North Road, Brighton

UNEARTHING SEQ'S PAST

Ceramics have been a key indicator of human habitation for thousands of years. The enduring nature of these familiar objects allows archaeologists to reveal patterns of everyday life. Discover the century-old ceramic pieces that have helped to build a bigger picture of Queensland's past.

Until August 30, the Redcliffe Museum will host *Unearthing Ceramics: Archaeological stories from South East Queensland* – an exhibition examining Queensland's early history through preserved ceramic items discovered across eight archaeological sites.

Moreton Bay Regional Council Division Six Councillor, Koliana Winchester said a variety of ceramics would be on display, including valuable porcelain and bone china pieces.

"After being buried for many years across sites in Redcliffe, Brisbane and South East Queensland, these items will be on display at the Redcliffe Museum and provide an insight into how Queenslanders lived in the 19th and early 20th centuries," Cr. Winchester said.

Unearthing Ceramics is curated in partnership with the University of Queensland's Senior Archaeology Lecturer Dr. Jonathan Prangnell.

Dr. Prangnell said the archaeological findings on display were from the university's research collection and formed a significant part in helping researchers understand how Queensland developed over 150 years.

"Many of the ceramics on display are part of the state's heritage and played a significant role in the everyday lives of early Queenslanders," Dr. Prangnell said.

"Two dinner plates come from the 1 William Street redevelopment in the Brisbane CBD and are from a small cottage that was built on



the site in 1855, and are the first two pieces of white granite tableware ever identified on a Queensland archaeological site."

The museum is located at 75 Anzac Avenue, Redcliffe and is open Tuesday to Sunday from 10am to 4pm.

For more information on the exhibition visit www.moretonbay.qld.gov.au or phone 3883 1898.



Celebrating 50 Great Years

2294 Sandgate Rd, Boondall
07 3265 8000 | nsmarine.com.au

AUGUST 2015 TIDE CHART

Time m	Time m	Time m	Time m
1 0425 0.31 0959 2.03 SA 1608 0.18 2229 2.63	9 0448 1.70 1104 0.48 SU 1746 2.17	17 0509 0.43 1058 1.95 MO 1702 0.45 2311 2.23	25 0501 1.61 1115 0.54 TU 1801 2.11
2 0510 0.27 1048 2.08 SU 1655 0.21 2313 2.59	10 0024 0.70 0602 1.69 MO 1210 0.45 1847 2.26	18 0536 0.44 1133 1.95 TU 1736 0.52 2341 2.14	26 0037 0.67 0609 1.71 WE 1219 0.44 1858 2.28
3 0553 0.25 1137 2.10 MO 1743 0.27 2356 2.49	11 0128 0.61 0705 1.73 TU 1309 0.41 1939 2.33	19 0607 0.45 1209 1.93 WE 1812 0.61	27 0136 0.52 0709 1.83 TH 1318 0.33 1949 2.42
4 0636 0.27 1227 2.11 TU 1832 0.39	12 0219 0.53 0756 1.79 WE 1400 0.38 2023 2.38	20 0012 2.03 0638 0.49 TH 1249 1.90 1852 0.71	28 0228 0.38 0803 1.95 FR 1414 0.23 2037 2.53
5 0041 2.33 0719 0.32 WE 1319 2.09 1925 0.52	13 0302 0.48 0840 1.84 TH 1443 0.36 2102 2.39	21 0047 1.90 0714 0.54 FR 1333 1.86 1939 0.81	29 0317 0.27 0854 2.06 SA 1506 0.17 2123 2.58
6 0129 2.14 0805 0.37 TH 1417 2.07 2027 0.66	14 0339 0.45 0919 1.88 FR 1521 0.36 2138 2.38	22 0129 1.76 0758 0.59 SA 1429 1.84 2042 0.88	30 0402 0.20 0943 2.15 SU 1557 0.14 2208 2.58
7 0224 1.95 0858 0.43 FR 1524 2.06 2142 0.76	15 0412 0.44 0953 1.91 SA 1556 0.37 2211 2.34	23 0225 1.65 0854 0.62 SU 1539 1.87 2203 0.89	31 0444 0.15 1031 2.22 MO 1645 0.16 2251 2.51
8 0331 1.78 0958 0.47 SA 1636 2.10 2306 0.77	16 0442 0.44 1026 1.93 SU 1629 0.40 2241 2.30	24 0342 1.59 1004 0.61 MO 1654 1.96 2327 0.81	



Northside Marine – The YAMAHA People

Sales - Service - Spare Parts - Advice



GIG GUIDE

SATURDAY 1

Michelle Clifford & Brad Wild
Mon Komo Hotel 4pm

Steve Sparrow
Ambassador of Redcliffe 6:30pm

Groove Elements ft. DJ Luke
Redcliffe Leagues Club 7pm

SUNDAY 2

My Lifestyle
Moreton Bay Boat Club 12:30pm

Komo Del Mar
Mon Komo Hotel 1:30pm

James Morrison
Brick Bistro Bar 2pm

Merlin
Redcliffe Leagues Club 6pm

TUESDAY 4

Ronnie Christie
Redcliffe Leagues 10:30am

Voice Your Talent
Redcliffe Leagues Club 6pm

WEDNESDAY 5

Inder
Redcliffe Leagues Club 11am

Melaanie & Brown Suga
Redcliffe Leagues Club 6pm

THURSDAY 6

Cathy Drummond
Redcliffe Leagues Club 6pm

Nyssa Berger Live music
Mon Komo Hotel 6pm

FRIDAY 7

Peter Kinch
Ambassador of Redcliffe 6:30pm

Lucky 13
Mon Komo Hotel 6:30pm

Kaffene ft. DJ Luke
Redcliffe Leagues Club 7pm

Callum Taylor
Moreton Bay Boat Club 8pm

DJ's Bell, 00Bond
Mon Komo Hotel 9pm

SATURDAY 8



Venus Envy + DJ Sin
Mon Komo Hotel 4pm

Zia
Moreton Bay Boat Club 6pm

Brent Hutchinson
Ambassador of Redcliffe 6:30pm

Paris Texas ft. DJ Django
Redcliffe Leagues Club 7pm

Amy Kate - Sunset Bar
Belvedere Hotel 8pm

SUNDAY 9

Luna Jazz Band
Sea Salt & Vine 11am

Mic Travers
Belvedere Hotel 12:30pm

Chris Doyle
Moreton Bay Boat Club 12:30pm

Komo Del Mar
Mon Komo Hotel 1:30pm

Danny Cassidy
Brick Bistro Bar 2pm

WEDNESDAY 12

Inder
Redcliffe Leagues Club 11am

Andy Dickson
Redcliffe Leagues Club 6pm

THURSDAY 13

Russell Hinton
Redcliffe Leagues Club 6pm

Nyssa Berger Live music
Mon Komo Hotel 6pm

FRIDAY 14

Sarenda
Mon Komo Hotel 6:30pm

Casey Fogg
Ambassador of Redcliffe 6:30pm

Jukebox Heroes ft. DJ Luke
Redcliffe Leagues Club 7pm

Spic N Span
Moreton Bay Boat Club 8pm

DJ's
Mon Komo Hotel 9pm

SATURDAY 15

Rush Hour & DJ Sin
Mon Komo Hotel 4am

Alan
Moreton Bay Boat Club 6pm

Chris Todd
Ambassador of Redcliffe 6:30pm

Empyre ft. DJ Luke
Redcliffe Leagues Club 7pm

SUNDAY 16

Mic Travers
Sea Salt & Vine 9am

Paisley Rd Duo
Moreton Bay Boat Club 12:30pm

Komo Del Mar
Mon Komo Hotel 1:30pm



Brett Whitmore
Brick Bistro Bar 2pm

Jimmy Novich - Jetty Bar
Belvedere Hotel 2:30pm

Dave Ritter
Redcliffe Leagues Club 6pm

WEDNESDAY 19

Inder
Redcliffe Leagues Club 11am

Michael
Redcliffe Leagues Club 6pm

THURSDAY 20

Brian Avery
Redcliffe Leagues Club 6pm

Nyssa Berger Live Music
Mon Komo Hotel 6pm

FRIDAY 21

Burlesque Show
Mon Komo Hotel 6:30pm

Yacob
The Ambassador of Redcliffe
6:30pm

FRIDAY 21



Trace
Mon Komo Hotel 6:30pm

Rush Hour ft. DJ Luke
Redcliffe Leagues Club 7pm

Fiddle Me Please
Moreton Bay Boat Club 8pm

Friday Fiesta-Latin Dance Night
Belvedere Hotel 8pm

DJ's Bell, Bond & Ozten
Mon Komo Hotel 9pm

SATURDAY 22

Stevenson Street
Mon Komo Hotel 4pm

Goran Sedlar
Moreton Bay Boat Club 6pm

Amos Pella
Ambassador of Redcliffe 6:30pm

Industry of Kool ft. DJ Luke
Redcliffe Leagues Club 7pm

SUNDAY 23

Mic Travers
Sea Salt & Vine 9am

Zia
Moreton Bay Boat Club 12:30pm

Mic Travers
Belvedere Hotel 12:30pm

Komo Del Mar
Mon Komo Hotel 1:30pm

James Warner
Brick Bistro Bar 2pm

Gary Hudson
Redcliffe Leagues Club 6pm

FRIDAY 28

Brad Wild Band
Mon Komo Hotel 6:30pm

Sister C
Ambassador of Redcliffe 6:30pm

Hippopotamus ft. DJ Luke
Redcliffe Leagues Club 7pm



Michael
Moreton Bay Boat Club 7:30pm

Jimmy Novich - Sunset Bar
Belvedere Hotel 8pm

SATURDAY 29

Playing Vegas
Mon Komo Hotel 4pm

QAM
Moreton Bay Boat Club 6pm

Peter Kinch
Ambassador of Redcliffe 6:30pm

Stevenson Street Band
Redcliffe Leagues Club 7pm

SUNDAY 30

Mic Travers
Sea Salt & Vine 9am

Alan
Moreton Bay Boat Club 12:30pm

Komo Del Mar
Mon Komo Hotel 1:30pm

James Morrison
Brick Bistro Bar 2pm

Amy Kate - Jetty Bar
Belvedere Hotel 2:30pm

Allan Cameron
Redcliffe Leagues Club 6pm

LOCAL DIRECTORY

Accommodation

Beach House B&B 20 Thompson Cres Clontarf Beach . 3284 0534

GORDON MOTOR INN 3283 4600
125 Anzac Avenue Redcliffe

Kippa-Ring Village Motel 418 Elizabeth Ave Kippa-Ring 3283 3933
 Oaks Mon Komo 99 Marine Drive Redcliffe 3283 9300
 Waltzing Matilda Motel 109 Margate Parade Margate . 3283 7177

Accounting & Bookkeeping

BALANCE ACHIEVED PTY LTD . . 0407 378 552
Registered BAS Agent/Bookkeeping Services



**REGISTERED
BAS AGENTS**

PH 0431 698 369

www.xlbooks.com.au




Air Conditioning



Proudly Servicing Redcliffe

3269 9773

www.safe-sure.com.au

Banks

ANZ Bank 270 Oxley Avenue Margate 13 13 14
 ANZ Bank 81 Redcliffe Pde Redcliffe 3284 8214
 ANZ Bank Cnr Anzac Ave & Boardman Rd Kippa-Ring 3284 6122
 Bank of QLD Shop 31, Anzac Avenue Kippa-Ring 3284 0888
 Commonwealth Bank 292 Anzac Ave Kippa-Ring 13 22 21
 Commonwealth Bank Cnr Redcliffe Pde & Baker St Redcliffe 13 22 21
 Commonwealth Bank Oxley Avenue Margate 13 22 21
 Heritage Bank Shop 107, 272 Anzac Ave Kippa-Ring 3283 4766
 Margate Community Bank 300 Oxley Ave Margate 3883 2399
 NAB Bank L 1, 14 Boardman Rd Kippa-Ring 13 22 65
 Suncorp Bank Peninsula Fair Shopping Kippa-Ring 1800 133 103
 Suncorp Bank Cnr Anzac Ave & Sutton St Redcliffe 3362 2222
 Westpac 262 Anzac Ave Kippa-Ring 13 20 32
 Westpac 65 Redcliffe Pde Redcliffe 13 20 32

Cafes & Restaurants

1st Stop Cafe 98 Elizabeth Avenue, Clontarf. 3284 8770
 Anka Kebab 272 Anzac Avenue Kippa-Ring 3883 1970
 Aussie Rooster Cnr Anzac Ave & Boardman Rd Kippa-Ring 3283 3883
 Avida Organic Cafe 89 Landsborough Ave Scarborough 3880 2007
 Baan Phaya Thai 82 Anzac Pde, Redcliffe 3283 2935
 Baan Phaya Thai 95 Prince Edward Pde, Scarborough . 3880 3477
 Bay Boats 439 Scarborough Rd Scarborough 3203 5033
 Bayside Kebab 9 Elizabeth Avenue Clontarf 3283 4141
 Bella Sicilia Pizza & Pasta 295 Oxley Ave Margate 3283 1755
 Big Dogs Pies 295 Oxley Ave, Margate 3283 8684
 Bikini Beach Cafe 77 Redcliffe Parade, Redcliffe 3883 1515
 Billy's On The Bay 109 Margate Parade Margate 3283 1888
 Breakers Snack Bar 2/150 Maine Road Clontarf 3284 0011
 Brick Bistro Bar 97 Redcliffe Parade Redcliffe 3284 1117
 Ceylon Inn Classic Curries 85 Redcliffe pde, Redcliffe . 3889 5775
 Danny's 89 Landsborough Avenue Scarborough 3880 1900
 Delgado's 255a Victoria Avenue Redcliffe 3284 5258
 Delightful Donuts 252 Anzac Avenue Kippa-Ring 3283 4603
 Desmonds On Anzac Takeaway 29 Anzac Ave Redcliffe . 3889 5801
 Domino's Pizza Shop 10 Portwood Place Redcliffe . . . 3384 2111

Cafes & Restaurants

Donut King Kippa-Ring Peninsula Fair Kippa-Ring . . . 3284 5650
 Feel Goodz Gourmet 14 Oxley Ave, Woody Point . . . 3284 7150
 Fed Up 26 Ashmore Road Redcliffe 3283 7117
 Fish'n at Bell's Beach 184 Hornbrook Espl Clontarf . . 3283 1618
 Flip 'N' Fish Cntr 1/9 Elizabeth Avenue Clontarf . . . 3283 6426
 Groovy Groper 114 Hornbrook Esplanade Clontarf . . . 3883 3499
 Healthy Noodle Bar 300 Oxley Avenue Margate 3283 5228
 Herbert's Hot Food 7a Sheehan Redcliffe 3889 4043
 Hog's Breath 115 Redcliffe Parade Redcliffe 3284 7244
 Honey Pot 29 Redcliffe Parade Redcliffe 3283 1655
 Hornbrook Bakery 114 Hornbrook Espl Clontarf . . . 0432 319 999
 Hungry Jack's P/L 286 Anzac Avenue Kippa-Ring . . . 3284 8286
 Indian Brothers Restaurant 40 Hornbrook Espl Clontarf 3284 5599
 JD Thai 3a Oxley Avenue Margate 3284 4558
 Jetty Café 155 Redcliffe Pde Redcliffe 3284 2986
 Kashmir Cafe 59 Redcliffe Pde, Redcliffe 0449 645 281
 Kazzys Larder 1/52 King Street Woody Point 3142 2244
 KFC 307 Oxley Avenue Redcliffe 3284 7777
 Lighthouse Takeaway 151 Oxley Ave Woody Point . . . 3284 2866
 Mamma's Italian Restaurant 265 Oxley Ave Margate . 3284 4512
 Marcello's Italian Restaurant 116 Sutton St Redcliffe . 3284 2312
 Marconi Coffee Shop 7/295 Oxley Ave Margate . . . 3283 3439
 Masala Point Café Restaurant 14 Oxley Ave Woody Pt 3284 0035
 McDonald's Clontarf 4 Oasis Court Clontarf 3283 8260
 McDonald's Kippa-Ring 272 Anzac Avenue Kippa-Ring . 3889 3833
 McDonald's Redcliffe 94 Sylvyn Street Redcliffe . . . 3883 2644
 Mertons Bakery Shop 7 538 Oxley Avenue, Redcliffe . . 3203 5511

MERTONS

BAKERY

3203 5511

Purveyors to the Discerning

COFFEE CAKES PASTRIES BREAD

Miccolini's Pizza & Pasta 143 Griffith Rd Scarborough . 3880 2755
 Morgans Seafood Bird of Passage Pde Scarborough . 3203 4592
 Outback Jacks Cnr Anzac Ave & Sutton St Redcliffe . . 3283 8125
 Pasta Kitchen 6/14 Oxley Ave, Woody Point 3889 5246
 Pasta Riviera 12 Cameron Street Clontarf 3284 2211
 Peninsula Fair Carvery 284 Anzac Avenue Kippa-Ring . 3284 2956
 Peninsula Takeaway Balmoral Street Margate 3283 2651
 Perky Panda Cnr Anzac Ave & Sutton St Redcliffe . . 0421 249 305
 Pilpel 26 Baynes Street, Margate 3092 2864
 Pizza Hut Clontarf 15/9 Elizabeth Ave Clontarf 1300 749 924
 Red Rooster 405 Elizabeth Ave Kippa-Ring 3283 4149
 Red Wing Charcoal Chicken 23 Redcliffe Pde Redcliffe . 3883 3008
 Redcliffe Pizza & Kebab Café 303 Oxley Ave Margate . 3889 5550
 Reddy Kebabs 133 Redcliffe Parade Redcliffe 3284 6911
 Reef Point Café 75 Redcliffe Parade, Redcliffe . . . 3284 6956
 Sails Restaurant Marine Parade Redcliffe 3284 3320
 Samila Thai Restaurant 295 Oxley Avenue Margate . . 3284 4430
 Saucy Mama 115 Sutton Street Redcliffe 3889 5994
 Sea Salt & Vine 2 Reef Point Esplanade, Scarborough 3880 4456
 Silver Lake Chinese Rest. 63 Landsborough Ave Scarborough 3880 1209
 Sizzler Redcliffe 76 Anzac Avenue Redcliffe 3283 1977
 Something Moore-Ish Café 27 Lilla St Woody Point . . 3883 4895
 Subway Clontarf 9 Elizabeth Avenue Clontarf 3889 5777
 Subway Kippa-Ring 272 Anzac Avenue Kippa-Ring . . 3283 7707
 Subway Redcliffe 159 Redcliffe Parade Redcliffe . . . 3283 3411
 Sushi Central 141 Sutton Street Redcliffe 3283 8188
 Sutton St Café 137 Sutton Street Redcliffe 3883 2393
 T&J's Snack Bar 33 Brewer Street Clontarf 3284 4471
 Tasha's Snack Bar 52 High Street Kippa-Ring 3284 3033
 Thai Hut 95 Redcliffe Road Redcliffe 3284 0744
 Thai Surprise 95 Prince Edward Parade Scarborough 3880 3477
 The Boat Shed 63 Landsborough Avenue Scarborough 3880 0555
 The Coffee Club 171 Redcliffe Parade Redcliffe . . . 3283 6147
 The Coffee Club - Kippa-Ring 284 Anzac Ave Kippa-Ring 3283 4739
 The Golden Ox 330 Oxley Avenue Margate 3283 1833
 The Oasis On The Esplanade 163 Redcliffe Pde Redcliffe 3283 1677
 The Rumbling Tummy Takeaway 57 Ashmore Rd Redcliffe 3203 7127
 The Rustic Olive 79 Redcliffe Parade Redcliffe 3889 3199

LOCAL DIRECTORY

Cafes & Restaurants

Under The Verandah 155 Oxley Ave Woody Point . . . 0415 728 825
 What's In The Pot? 133 Redcliffe Pde Redcliffe . . . 3283 4433
 Wok Me Noodle Bar Bluewater Square Redcliffe . . . 3283 5333
 Woody's Seafood 42 Oxley Avenue Woody Point . . . 3284 5545
 Yung Lee Kippa Ring Shopping Centre Kippa-Ring . . . 3283 4402
 Zarraffa's Coffee 20 Anzac Ave Redcliffe . . . 3283 2711
 Zorba's Pizza & Pasta 12 Duffield Road Margate . . . 3283 7000

Cleaning Services

NORTHSIDE BOND EXIT CLEANERS. . 0434 911 051
Fed Police checks. Fully Guaranteed.

Community

Australian Red Cross Portwood St Redcliffe . . . 3883 2388
 Neighbourhood Centre 1 Lamington Drv Redcliffe . . . 3284 3081
 PCYC Klingner Rd Redcliffe . . . 3285 1900
 Quota International Redcliffe Inc Margate . . . 38803462
 Redcliffe Area Youth Space Cnr Anzac & Oxley Ave Redcliffe 3283 8769
 Redcliffe Cultural Centre Downs Street Redcliffe . . . 3283 4000
 Redcliffe Surf Life Saving Club PO Box 277 Redcliffe . . . 3284 4105

Concrete Services

ALL AREAS All aspects of concreting and concrete cutting
 Dave 0407 102 757

PENINSULA CONCRETING
QBSA Act Lic No: 10081948

Electricians

Elimbah Electrics All Areas . . . 0413 154 367
 Gold Electrical All Areas . . . 3491 3909
 K&G Electrical . . . 3293 2999
 Loveday Electrical . . . 5495 7966
 Mr A Electric . . . 5428 3055



SAFE & SURE
ELECTRICIANS • AIR CON • SOLAR
"gentlemen in the trade"

Proudly Servicing Redcliffe

3269 9773

www.safe-sure.com.au

Wattpower 19 Dalton Street Kippa-Ring . . . 3889 5599

Fitness

Anytime Fitness 9 Elizabeth Avenue Clontarf . . . 3284 0708
 GK Fit Mobile Personal Trainer . . . 0413 856 920
 Healthworks Peninsula 20 Anzac Ave Redcliffe . . . 3284 3155
 Jerome's School of Tai Chi 23 Victoria Ave Woody Point. 3883 2766
 Jettis Fitness Margate 326 Oxley Ave Margate . . . 3283 2715
 Mantis MMA 14 Redcliffe Gardens Drive Clontarf . . 0409 729 030
 Max 24 Hour Fitness 607 Oxley Ave Scarborough . . . 3203 4121
 Peninsula Fitness 34 Baynes St Margate . . . 3283 1377
 Peninsula Fitness 228 Anzac Ave Kippa-Ring . . . 3284 6631
 Reddy Fit - Clontarf 10 Noel Street Clontarf . . . 0402 635 392
 Snap Fitness 250 Anzac Ave Kippa-Ring . . . 0412 088 010

Funeral Directors

TRADITIONAL FUNERALS 3284 7333
17 Anzac Avenue Redcliffe

Galleries

Redcliffe City Art Gallery 470-476 Oxley Ave Redcliffe . 3283 0415
 Redcliffe Cultural Centre Downs Street Redcliffe. . . 3283 0400
 Sea Side Artists Gallery 133 Redcliffe Pde Redcliffe . . 3284 3356

Government & Services

Centrelink 279 Oxley Avenue Margate 13 24 68
 Luke Howarth MP Member For Petrie Clontarf . . . 3284 8008
 Medicare 279 Oxley Avenue Margate. 132 011
 Redcliffe Hospital Anzac Avenue Redcliffe. 3883 7777
 Redcliffe Library 470-476 Oxley Ave Redcliffe 3283 0311
 Yvette D'Ath MP Cnr Anzac Ave and Sutton Str Redcliffe 3284 2667

Hair & Beauty

198 Hair Studio 17 Moonga Crt Clontarf 3269 6156
 Allured Hair Studio 295 Oxley Ave Margate. 3889 4212
 Anthony Presotto 13 Balmoral Street Margate . . . 3283 2228
 Arke Hair Artistto 14 Oxley Avenue Woody Point . . . 3889 5005
 Barber's Den Kippa-Ring Shopping Village Kippa-Ring 3284 5370
 Bayside Int Hair & Beauty Bar 2 Anzac Ave Redcliffe. 0423 713 193
 Beautiful You Hair & Beauty 4 Duffield Rd Margate. . . 3284 6463
 Becky B Hairdressing 138 Sutton St Redcliffe . . . 0432 908 541
 Benita's Hair Shop 43a Anzac Ave Kippa-Ring. . . . 3284 0780
 Bio Point Hair Shp 1b/ 27 Lilla St Woody Point . . . 3283 1722
 A Beautiful Facial 127 Sutton Street, Redcliffe . . . 0407 673 604
 Body Bliss Health & Beauty Salon 39 Bank St Margate. 3283 3288
 Bronzed Hair 53 Maine Road Clontarf 3496 2584
 Carmens Cuts 257 Oxley Ave Margate 3283 3288
 Cel-T'air Hair 300 Oxley Ave Margate 3883 1580
 CJ Shears Ctrfr 10 Lucinda Street Clontarf 3284 4247
 Cutting It Up 110 Ashmore Rd Redcliffe 3880 3881
 Elixir Hair & Beauty 103 Kate Street Woody Point . . 3283 8380
 FMG Hair 24 Baynes St Margate 3283 5500
 Gossip Hair & Beauty Bar 457 Portwood Pl Redcliffe. . 3284 6408
 Hair on Victoria Ave 277 Victoria Ave Redcliffe . . . 0412 419 830
 Hair Revolution 319 Oxley Avenue Margate 3284 7008
 Happy Cuts Hair Salon 141 Redcliffe Parade Redcliffe. 3284 3990
 Identity Hair Design 300 Oxley Avenue Margate . . . 3142 2082
 Ink Hair Creations 180 Anzac Ave Kippa-Ring. . . . 3142 4824
 Jaffa's Styling Studio 83 Griffith Rd Scarborough . . 3203 7374
 Just Cuts 128 Sutton Road Redcliffe. 3284 5830
 Ken's Men's Hairstylist 77 Redcliffe Parade Redcliffe. 3284 4829
 Kerry Design Hair Studio 2 Bell St Woody Point . . . 3284 7197
 Kidman's Hair Studio 147 Sutton Street Redcliffe . . . 3283 3001
 Luppino's 272 Anzac Avenue Kippa-Ring 3883 2024
 Majestic Hair 265 Oxley Av Margate 3284 7676
 Making Waves on Scarborough 95 Landsborough Ave . 3203 5080
 Midway Hair 538 Oxley Ave Redcliffe 3203 4003
 MKL's Hair 200 Prince Edward Pde Scarborough . . . 3474 5801
 Morag's 77 Dakis Arcade Redcliffe 3284 2644
 My Bomb Shells Shop 3 Jetty Arcade, Redcliffe . . . 0427 278 820
 NVS Hair & Beauty Bluewater Sq Shopping Redcliffe . 3284 1474
 Piasecki's Hairstudio Dakis Arcade, Sutton Str Redcliffe 3284 2644
 Rebhorne 127 Sutton Street, Redcliffe 3283 7757
 Redcliffe Barber Shop Shp2/ 120 Sutton St Redcliffe 3284 2882
 Rob's Barber Shop Oxley Avenue Margate 3284 6638
 Rustic Blend Hair 65 Landsborough Ave Scarborough 3203 5441
 Silhouette Hair Design 26 Baynes Street Margate . . 3883 1414
 Simply Organic Hair 468 Oxley Avenue Ave Redcliffe . 3883 2229
 Simply Strandzz of Redcliffe 93 Redcliffe Pde 3283 1211
 Stefan Hair Fashions Peninsula Fair Kippa-Ring . . . 3284 1122
 Studio 7 Hair Design 107 Anzac Ave Redcliffe 3284 3558
 Taylor Made Styling 145 Griffith Road Newport . . . 3203 4411
 The Hair People 57 Ashmore Road Redcliffe 3880 0612
 The Texture Crew 538 Oxley Avenue Redcliffe. . . . 3203 4003
 Totally Hair Direct 14 Constance Crt Kippa-Ring . . . 3880 3380
 Touch Of Beauty Hair Fashions 253a Victoria Ave Redcliffe 3284 7585
 Trimble's Hair Design 11 Maine Rd Clontarf 3284 4319 Vicki's
 Hairtrix Kippa-Ring Vlge Kippa-Ring 3284 6923
 Vintage Hair & Beauty 89 Landsborough Ave Scarborough 3880 0222
 Yvette's Unique Mobile Hairdressing All Areas . . . 0430 534 294

LOCAL DIRECTORY

Health & Wellbeing



Sharon Stanford
BRIGHTON
p. 0420 220 485 e. sharon@dynamicpeace.com.au

Bay Therapy 315 Oxley Ave Margate 1300 553 663
Lifestyle Health & Wellbeing 30 Ashmole Rd Redcliffe. 3885 7115
LIME Mobile Massage and Aromatherapy, All areas . . 0431 561 290
LIVE.LOVE.BE. Lifestyle Studio 326 Oxley Ave, Margate. 0427 608 843

ATMS Accredited Practitioner
Jeanette Shaw Dip RM

Nurture by Nature
Massage Therapy

Ph 3283 7992
Health Fund Rebates
REMEDIAL • SPORTS • RELAXATION

Redcliffe's Family Chiropractors 17 Silvyn St Redcliffe. 3284 2065
Scarborough Chiropractic Ctr 612 Oxley Ave Scarborough 3203 6944
Spectrum Health Chiro 173 Oxley Ave Woody Point . . 3284 4003
Third Eye Healing 74 Ernest Street Margate 3883 3882

Hotels & Bars

Ambassador Of Redcliffe 41 Redcliffe Pde Redcliffe . . 3284 6427
Belvedere Hotel Woodcliffe Crescent Woody Pt . . . 3284 2245
Bramble Bay Bowls Club Hornibrook Esplanade Woody Pt 3283 4411
Captain Cook Tavern Peninsula Fair Kippa-Ring. . . . 3284 0322
Mon Komo Hotel 99 Marine Parade Redcliffe 3284 6520
Redcliffe Leagues Club Klingner Rd Redcliffe. . . . 3203 7333
Redcliffe Tavern 34 Anzac Ave Redcliffe 3385 1200

Plumbers

Craig Plumbing (Qld) P/L 0419 739 423
Damien'S Plumbing Services Qld P/L All Areas 3283 5689
Jimmy Gladman Plumbing All Areas 0419 743 320
Kippa-Ring Plumbing Service 3283 7986
Jono's Plumbing Services Redcliffe 0406 754 476
Redcliffe Plumbing & Gas Services 07 3885 4664
Taps 'N' Toilets Moreton 0407 166 481

Real Estate Agents

Abode Properties 42 Oxley Avenue, Woody Point . . . 3284 1999
Blitz Realty 249 Oxley Ave Margate 0412 571 554
Cent. 21 Maddies Hermans 99 Landsborough Ave Scrbr 3880 0033
Chilli Real Estate 91 Landsborough Ave Scarborough 3880 4440
Coronis 260 Oxley Ave Redcliffe. 3883 4877
Crown Properties 91 Marine Parade 3283 3313
Elders Redcliffe 39 Redcliffe Pde Redcliffe 3883 3100
Gateway Properties 1 Marine Pde Redcliffe 3283 4555
Jan Jones Real Estate 10 Hornibrook Esp Clontarf . . 3283 6737
John Beal 23 Redcliffe Pde Redcliffe 3284 2444
Kindred Property Group 320 Oxley Ave Margate . . . 3284 0512
Mister Real Estate 132 Sutton St Redcliffe 3283 4966
Move On Realty 67 Redcliffe Pde, Redcliffe 3283 3355
LJ Hooker Redcliffe 45 Redcliffe Pde 3897 5000
Professionals Real Estate 99 Redcliffe Pde Redcliffe . . 3283 1300
Professionals Real Estate 54 Oxley Av Woody Point . . 3283 2277
Queensland Properties 6/3 Violet Street Redcliffe. . 3883 1122
Ray White 125 Redcliffe Pde Redcliffe 3283 2033
Ray White Margate 34 Baynes St 3283 4300
RealWay Property Consultants 105 Arthur St Woody Pt. . 3883 9999

SELLING SELLING SOLD 3284 7158
35-37 Redcliffe Pde, Redcliffe

Stephen Smith 614 Oxley Scarborough 3880 4311
Wave Realty 148 Hornibrook Esplanade Clontarf. . . . 3889 4377

Retail

china robe.com
Retro • Vintage • Antiques
149-151 Sutton St Redcliffe • **0421 356 412** Sigrid

Coljo's Fashion 94 Sutton Street, Redcliffe. 0404 413 967

Ironwood Cottage
IRONICS & WHOLEFOODS
8 Hancock Street, Sandgate
Phone 3869 4548

Kooky Costumes 116 Sutton Street, Redcliffe 0416 592 290
Little Bear Brown Shop 2 Jetty Arcade, Redcliffe. . . 0402 324 824
Madison in Bloom, Redcliffe 3889 4269
Pam's Affordable Gifts 140 Sutton Str Redcliffe . . . 0418 797 241

Pam's
Affordable Gifts
140 Sutton Street, Redcliffe **0418 797 241**

Sutton Street Shoes Bluewater Square, Redcliffe . . . 3889 3639
The Lucky Charm Blue Water Square, Redcliffe . . . 3883 1087
The Natural Candle Shop 128 Sutton St, Redcliffe . . 3142 0824
Vast Interior 177 Redcliffe Pde, Redcliffe 3284 3222

Schools

AUSTRALIAN
TRADE COLLEGE
NORTH BRISBANE
294 Scarborough Road, Scarborough
Ph: 07 3880 4331 • www.tradecollege.com.au

Clontarf Beach High Elizabeth Ave Clontarf. 3480 4777
Clontarf Beach State School Elizabeth Av Clontarf . . 3897 5888
Grace Lutheran Primary School 38 Maine Rd Clontarf . 3283 0011
Hercules Road State School Hercules Rd Kippa-Ring . 3897 4333
Humpybong State School Ernest Street Margate. . . 3385 1666
Kippa-Ring State School 400 Elizabeth Av Kippa-Ring . 3897 5333
Redcliffe Special School Klingner Rd Redcliffe. . . . 3897 5111
Redcliffe State High Klingner Rd Redcliffe. 3897 1111
Scarborough State School Eversleigh Rd Scarborough 3480 3333
Southern Cross Catholic Clge 307 Scarborough Rd Scarb 3480 3600
Woody Point Special School 85 Georgina Str Woody Pt 3480 4333

Travel Agents

helloworld
90 Sutton St Redcliffe Ph: 3284 9222

NEW MENU & GREAT NEW SPECIALS!

MONDAY

BarraMonday
\$19.95 Grilled Barramundi,
 Chips & Salad

THURSDAY

**1/2 Price
 Pizzas**
cabana
 BAR • TERRACE

**3 Course
 Themed Thurs**
\$39 CARIBBEE
 RESTAURANT

CHANGES WEEKLY

TUESDAY

Natural Born Killers
\$2.00 Oysters Natural
 or Kilpatrick



FRIDAY

**Friday is
 Pieday!**
 Chef's Gourmet
 Pie Selection.

Early Bird Offer
 Every two main courses off Carribee
 menu includes a bottle of house
 wine - must order before 6.30pm

CHANGES WEEKLY

WEDNESDAY

Hump Day Rump
\$19.95 300g Kingaroy Grain Fed
 Rump, Chips & Salad
 PLUS \$5 Garlic Prawn Toppers

SATURDAY

Wine O'Clock
 Free cheese plate or bread & dips with any
 bottle of wine 3 to 5pm **Live Music from 4pm**

SUNDAY



Bucket of Prawns
\$20 Bucket of Fresh
 Local Trawler
 Prawns

Buckets of Corona,
 Somersby & Sangria
 Jugs available Live
 music from 1pm

Sunday Brunch

9am-2pm | \$24.90 Adults | \$12.50 Kids under 14

Let's Do Lunch

Mon/Fri \$19.00 for 2 courses

Eat, Drink & Play.

99 MARINE PARADE REDCLIFFE | P 3284 6520
 WWW.MONKOMOHOTEL.COM.AU | FACEBOOK.COM/MKHOTEL



MON KOMO HOTEL

**SELLING
 YOUR
 HOUSE?**

"We offer the
Lowest sales
 commission on
 the Redcliffe
 Peninsula"

David Griffiths LREA
 Principal

M: 0412 571 554

249 Oxley Avenue, Margate Q 4019
 www.blitzrealty.com.au

Blitz Realty®

Sale Price	Standard	BLITZ	Saving YOU
\$ 400,000	\$ 10,450	\$ 6,450	\$ 4,000
\$ 500,000	\$ 12,950	\$ 7,950	\$ 5,000
\$ 600,000	\$ 15,450	\$ 9,450	\$ 6,000
\$ 700,000	\$ 17,950	\$ 10,950	\$ 7,000
\$ 800,000	\$ 20,450	\$ 12,450	\$ 8,000
\$ 900,000	\$ 22,950	\$ 13,950	\$ 9,000

redcliffe
GUIDE

DESIGN & PRINT

**BUSINESS CARDS
+ FLYERS**



Printed Locally

**Designed, Printed
And Delivered
Right To Your Door**

**1000 DL FLYERS
\$90 +GST***

*Price excludes artwork and delivery. Valid August only



**PH: 0450 078 200
info@redcliffe.net.au**